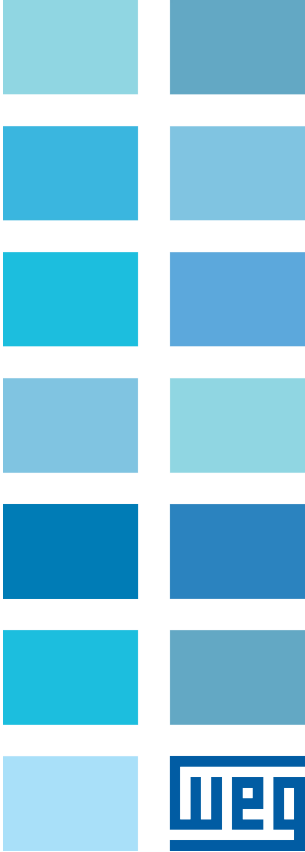
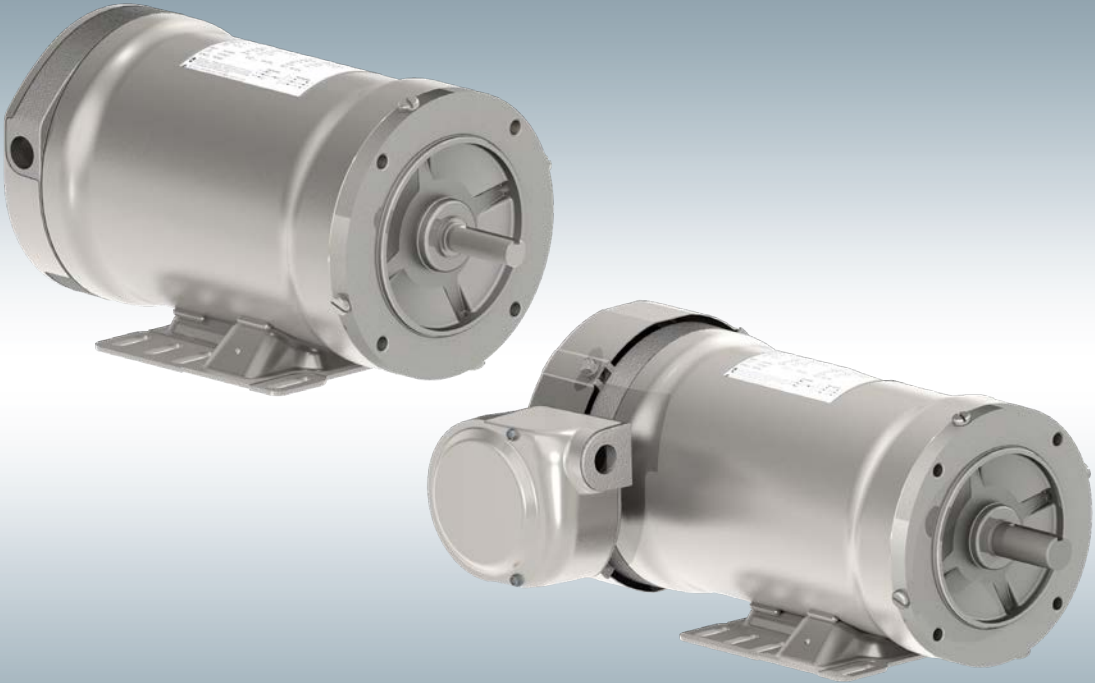


HydroDuty® with EZ-Connect*

The Best just got BETTER!



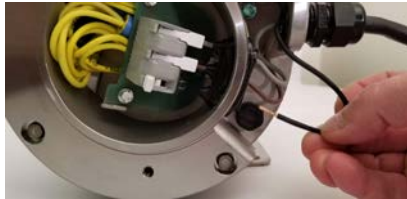
* Patent Pending

Encapsulated Washdown Motor

The Ultimate Washdown Motor now with EZ Connect* Technology

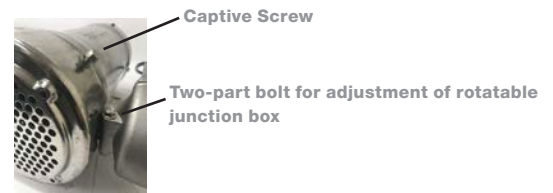
Key Features

- Available in frames 56C, 143/145, 80 and 100L
- This motor is wired for 460V. 230V is available by simply reconnecting the leads in the conduit box for 230V.
- This new connection method is IP69K rated and maintains our Waterproof Guarantee while significantly reducing installation time by eliminating the need for shrink tubing and heat gun use.
- The Quick Connect grommets of the Advanced Lead Seal eliminates the need for splice kits significantly reducing the installation time of the motor.
- The waterproof Advanced Lead Seal will have dielectric grease in each hole allowing for easy insertion of the power leads.
- Simply insert the incoming power leads thru the waterproof Advanced Lead Seal into the Quick Connect Cage Clamp® terminal block.
- The grommets will align each incoming power lead with the corresponding position featuring a Cage Clamp® terminal Block
- Once each power lead is inserted into the Quick Connect Cage Clamp electrical connection is achieved by pushing down the levers of the Quick Connect Cage Clamp®



TEFC Unique Features (0.5HP through 2HP)

- A sealed conduit box that can be rotated in 90 degree increments, allowing it to be placed in a permanent position at either 12, 3, 6, or 9 O'clock orientation for easy alignment with the installation environment



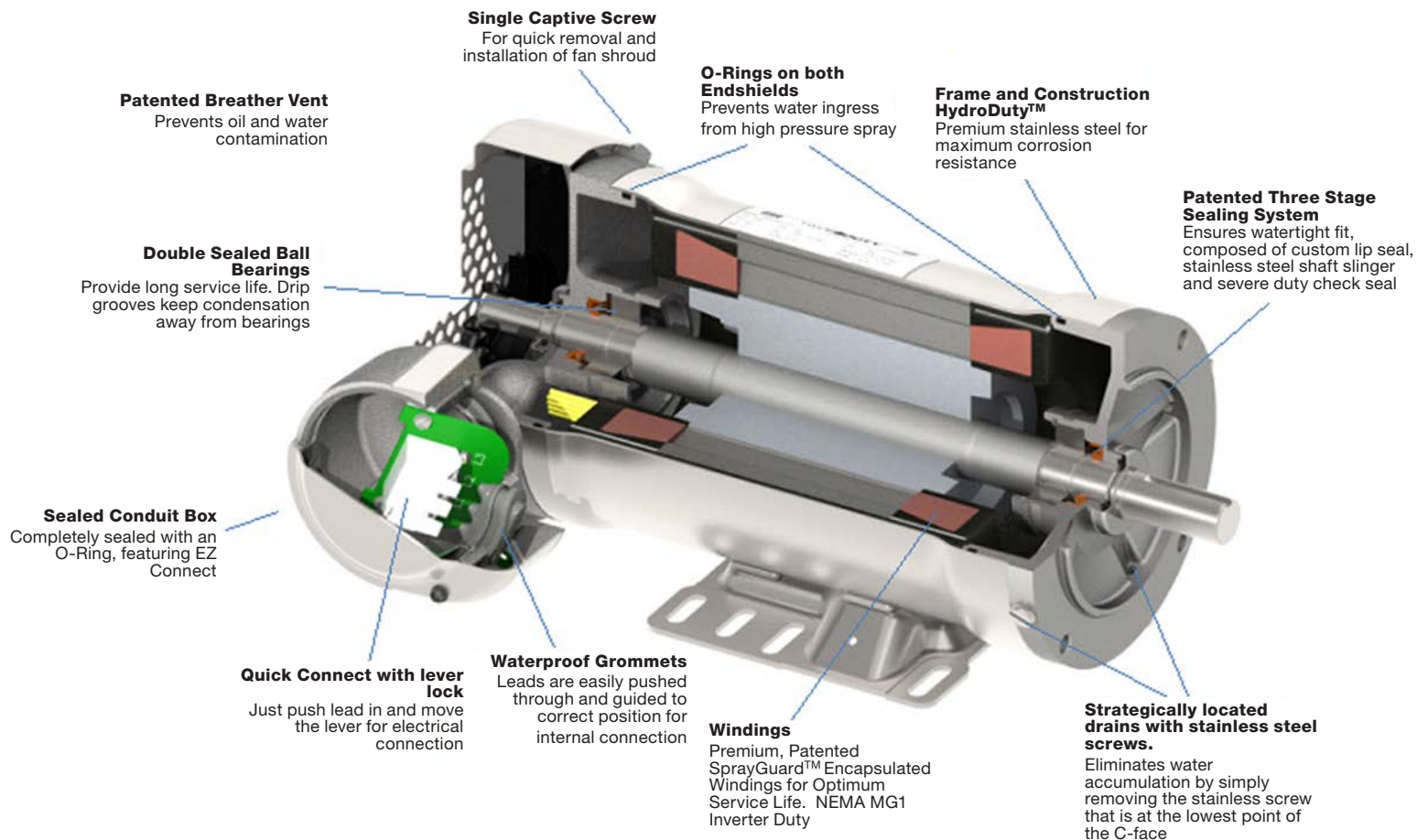
- The fan shroud is connected to the ODE end bell with a captive screw. The captive screw can be loosened allowing the removal of the fan shroud eliminating frustration of lost hardware and allowing for washdown crews to easily remove and clean debris from fan shroud.

TENV New Features (0.5HP through 1HP)

- Sealed conduit box is located in the opposite drive end bell and is held in place with two captive screws
- No external box on the side of the motor, with lower motor profile, allowing easier installation in tight spots.
- The conduit entry is threaded and at the 9:00 O'clock position.



HydroDuty with EZ Connect* Technology



HydroDuty General features

Applicable for the complete line

- IP69K Certified
- Inverter Rated
- Internal Aegis Shaft Grounding ring available upon inquiry
- Warranty Includes Water Ingress for 12 months after installation.
- If water causes the motor to fail WEG considers this a defect in materials and workmanship.
- NEMA Premium design
- This is the ultimate stainless steel waterproof motor. It has been proven to provide 75% more cycles than other brands through extreme environment testing.
- Significantly reduces motor replacement and downtime costs
- Available from 1/2HP to 5HP, 860, 1140, 1725 or 3450 RPM
- TENV or TEFC enclosures
- NEMA Frames 56C and 143/5TC
- Metric Frame 80-B5 and 100L-B14

* Patent Pending





WEG Electric Corp. offers the following products, and more! With a full range of IEC/NEMA Global Certifications and a full line of products, WEG can supply the right solution for your needs anywhere in the world. To learn more about WEG's products and solutions or to locate a Distributor near you, please call **1-800-ASK-4WEG** or visit **www.weg.net**.

Low Voltage Motors, Single and 3-Phase, 1/8 – 700HP

- General Purpose Motors
- Explosion Proof Motors
- Crusher Duty Motors
- IEC Tru-Metric Motors
- Pump Motors including JP/JM
- P-Base Pump Motors
- Oil Well Pumping Motors
- Pool & Spa Motors
- Brake Motors
- Compressor Duty Motors
- Farm Duty Motors
- Poultry Fan Motors
- Auger Drive Motors
- IEEE 841 Motors
- Stainless Steel Wash Down Motors
- Saw Arbor Motors
- Cooling Tower Motors
- Commercial HVAC Motors
- Pad Mounted Motors
- Vector Duty Motors

Large Electric Motors

- Low Voltage 3-phase motors up to 2,500HP
- Induction Motors up to 70,000HP and 13,200V
- Wound Rotor Systems (including starters) up to 70,000HP and 13,200V
- Synchronous Motors up to 200,000HP and 13,200V
- Explosion proof motors (Ex-d) up to 1,500kW and 11kV
- Ex-n, Ex-e, Ex-p motors

Variable Frequency Drives

- Low Voltage 1/4 to 2500HP, 230V – 480V
- Medium Voltage 500-10,000HP
- Multi-pump systems
- NEMA 4X
- Dynamic braking resistors
- Line and load reactors
- Plug and play technology
- Network communications: Profibus-DP, DeviceNet, Modbus-RTU
- PLC functions integrated
- Complete line of options and accessories

Soft Starters

- 3-1500HP
- Oriented start-up
- Built-in bypass contactor
- Universal source voltage (230-575V, 50/60Hz)
- Network communications: Profibus-DP, DeviceNet, Modbus-RTU
- Complete Line of options and accessories
- MV Soft-starter 3.3kV, 4.16kV: up to 3500HP, Withdrawable Power Stacks, & 8x PT100 Temperature monitoring

Controls

- Mini – Contactors
- IEC Contactors
- Thermal Overload Relays
- Manual Motor Protectors
- Molded Case Circuit Breakers
- Smart Relays
- Enclosed Starters: combination & non-combination
- Pushbuttons & Pilot Lights
- Timing & Motor Protection Relays
- Terminal Blocks

Custom Panels

- Custom configured to your specification.
- NEMA 1, 12, 3R, 4 and 4X cabinets
- Quick delivery of preconfigured drives and soft starters
- UL 508 certified
- Low Voltage (230-460)
- Made in the U.S.A.

Generators

- Brushless Synchronous Generators for diesel gen-sets up to 4,200kVA
- Hydro-generators up to 25,000kVA
- Turbo-generators up to 175,000kVA

Power Transformers

- Built and engineered in North America
- Voltages < 345kV
- Ratings 5-250MVA
- Station class, oil filled, round core, copper windings
- Special configurations and designs available!
- Ask your WEG Sales Representative for details.
- Designed, built, and engineered to ANSI standards.

Custom Solution Package Sales

- WEG can package any of its products for ease of sale! Enjoy a single point of contact for the entire package of products and assistance from quote through after-sales support. Ask your WEG Sales Representative for details.



WEG ELECTRIC CORP.
 6655 Sugarloaf Parkway
 Duluth, GA 30097
 Phone: 1-800-ASK-4WEG
 Fax: 678-249-1155
info-us@weg.net
www.weg.net67

Please contact your authorized distributor:

