



Farm Duty Motors

WEG RELIABLE & TOUGH
For ALL Seasons

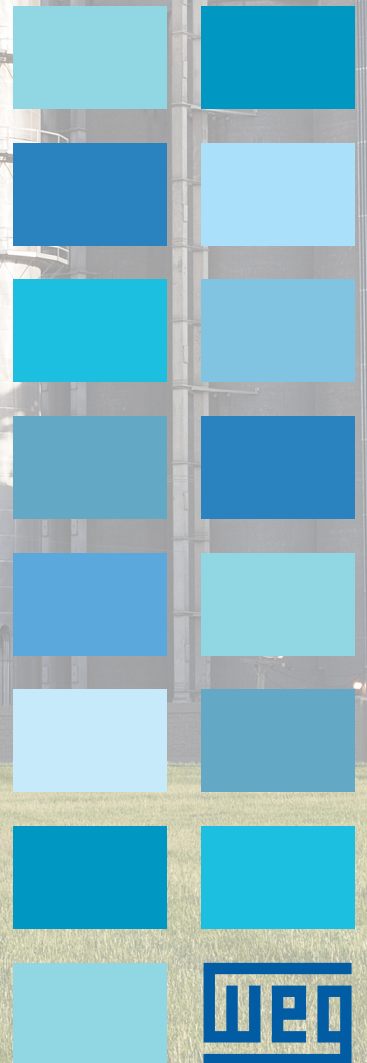


Table of Contents

Farm Duty Motors

	Farm Duty, Single-Phase, TEFC	4
	Farm Duty, Three-Phase, TEFC	5
	Poultry Fan, Single-Phase, TEAO	6
	Poultry Fan, Single-Phase, TEAO, Resilient Base	6
	Auger Drive, Single-Phase, TEFC, Flange Mount	7
	Grain Dryer/Vane Axial, Single and Three-Phase, TEAO.....	8
	Aeration Fan, Single-Phase, TEAO	9
	Aeration Fan, Three-Phase, TEAO.....	9
	Irrigation Duty	10
	Irrigation Drive	11
	End Jet Booster Pump	11



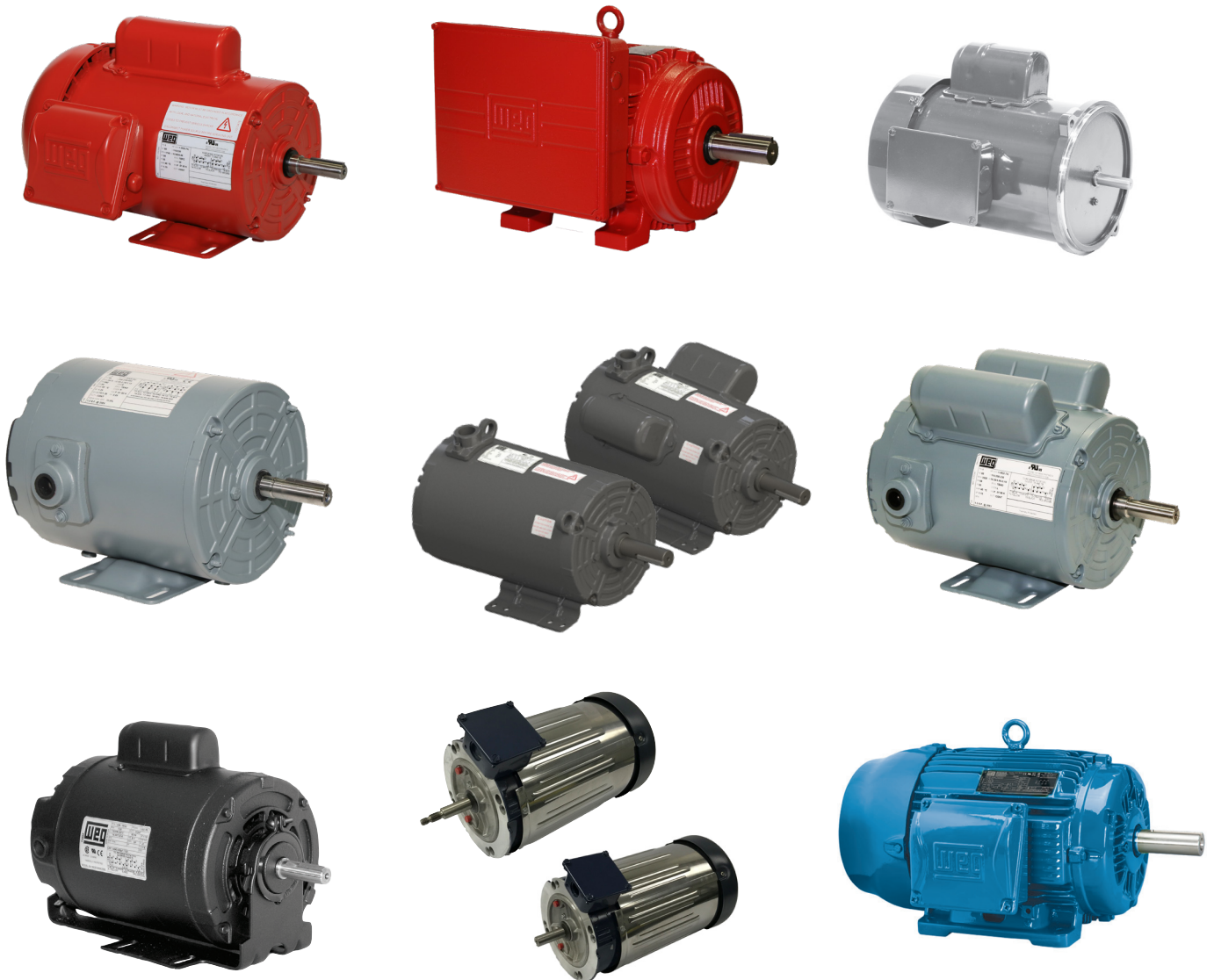
Farm Duty Motors

WEG RELIABLE & TOUGH
For ALL Seasons



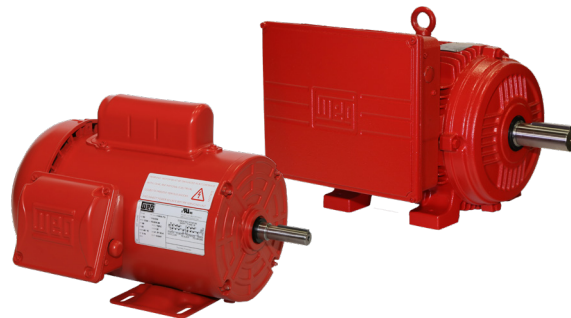
Farm Duty Motors

WEG is known for highly reliable, tough motors. WEG's line of Farm Duty motors is no different. Designed in accordance with the application requirements of torque and environment, these motors are built to last. Standard features such as v-rings on totally enclosed motors provide versatility for indoor and outdoor applications. All motors are equipped with either thermostats or thermal overload protectors, providing protection against extreme overloads and offering safety to operators. In addition, if your Ag business is in need of a general purpose three-phase solution, do not forget our wide range of cast iron Severe Duty W22 motors or the tough-built Rolled Steel offering.



Farm Duty, Single-Phase, TEFC

- Double shielded ball bearings
- Insulation class F with class B temperature rise
- Start and run capacitor on 1.5 HP and up
- High starting Torque
- Manual Reset Thermal Overload Protector



HP	KW	RPM	NEMA Frame	Catalog Number	List Price	Multiplier	Approx. Shipping Weight (lbs)	Service Factor	FL Amps @ High	FL. Eff (%)	"C" Dimension (in)	Voltage (V)	Notes
0.33	0.25	1800	W56	.3318ES1RFDW56-S	\$284	R1	22	1.15	3.00	61.0	11.500	115/230	4;9
0.5	0.37	1800	W56	.5018ES1RFDW56-S	\$308	R1	25	1.15	4.00	64.0	11.894	115/230	4;9
0.75	0.55	1800	56	.7518ES1RFD56-S	\$357	R1	34	1.15	5.30	68.5	13.114	115/230	4;9
		1800	56	00118ES1RFD56-S	\$394	R1	40	1.15	6.80	71.0	13.902	115/230	4;9
1	0.75	1800	143/5T	00118ES1RFD143T-S	\$400	R1	40	1.15	6.80	71.0	13.969	115/230	4;9
		1800	56H	00158ES1RFD56H-S	\$502	R1	41	1.15	7.48	77.0	15.083	115/230	4;9
1.5	1.1	1800	143/5T	00158ES1RFD145T-S	\$504	R1	50	1.15	7.48	77.0	15.152	115/230	4;9
		1800	56H	00218ES1RFD56H-S	\$529	R1	46	1.15	10.0	78.5	15.870	115/230	4;9
2	1.5	1800	143/5T	00218ES1RFD145T-S	\$578	R1	57	1.15	10.0	78.5	15.938	115/230	4;9
		1800	182/4T	00218ES1RFD182T-W22	\$790	R1	85.3	1.15	8.4	80	17.012	115/230V	4; 39
3	2.2	1800	182/4T	00318ES1DFD184T-W22	\$915	R1	104	1.15	13.80	77	17.012	230V	4; 39
5	3.7	1800	182/4T	00518ES1DFD184T-W22	\$1,074	R1	117	1.15	21.4	80	17.012	230V	4; 39
		1800	213/5T	00518ES1DFD215T-W22	\$1,205	R1	146	1.15	21.3	80.5	19.462	230V	4; 39
		1800	213/5TZ	00518ES1DFD215Z-W22	\$1,205	R1	146	1.15	21.3	80.5	19.462	230V	4; 39
7.5	5.5	1800	213/5T	00718ES1DFD215T-W22	\$1,463	R1	176	1.15	31.7	83	19.462	230V	4; 39
		1800	213/5TZ	00718ES1DFD215Z-W22	\$1,463	R1	176	1.15	31.7	83	19.462	230V	4; 39
10	7.5	1800	213/5T	01018ES1DFD215T-W22	\$1,692	R1	194	1.15	40.9	84	19.462	230V	4; 39
12.5	9.2	1800	213/5T	01218ES1DFD215T-W22	\$1,889	R1	205	1.15	54.5	82.5	19.462	230V	4; 39

Notes:

4) Manual Reset Thermal Overload Protector

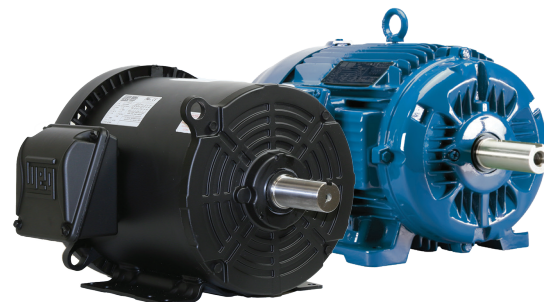
9) Rolled Steel Frame



Farm Duty, Three-Phase, TEFC

WEG Rolled Steel motors offer a robust and light weight solution for a variety of general farm/Ag applications.

- TEFC enclosure
- Bearing seals as standard
- IP55 ingress protection rating
- Robust mounting feet
- Inverter rated
- Option for internal AEGIS® SGR



WEG W22 Cast Iron motors are severe duty as standard and the perfect solution for heavy duty Farm/Ag applications, with demanding loads and tough environments

- TEFC enclosure
- Bearing seals as standard
- IP55 ingress protection rating
- FC-200 grade cast iron
- Inverter rated
- Option for internal AEGIS® SGR

HP	kW	RPM	NEMA Frame	Catalog Number	List Price	Mult. Symbol	Approx. Shipping Weight (lbs)	Service Factor	FL Amps @ High	FL Eff (%)	“C” Dimension (in)	Voltage (V)	Notes
1	0.75	1800	143/5T	00118ET3E143T-S	\$459	RSP	43	1.15	1.47	85.5	13.583	208-230/460	9
1	0.75	1800	143/5T	00118ET3E143T-W22	\$527	N1	46	1.25	1.41	85.5	13.346	208-230/460	
1.5	1.1	1800	143/5T	00158ET3E145T-S	\$480	RSP	43	1.15	2.02	86.5	13.583	208-230/460	9
1.5	1.1	1800	143/5T	00158ET3E145T-W22	\$551	N1	54	1.25	2.02	86.5	13.346	208-230/460	
2	1.5	1800	143/5T	00218ET3E145T-S	\$533	RSP	47	1.15	2.72	86.5	13.976	208-230/460	9
2	1.5	1800	143/5T	00218ET3E145T-W22	\$612	N1	56	1.25	2.61	86.5	13.346	208-230/460	
3	2.2	1800	182/4T	00318ET3E182T-S	\$577	RSP	87	1.15	3.81	89.5	17.894	208-230/460	9
3	2.2	1800	182/4T	00318ET3E182T-W22	\$663	N1	96	1.25	3.88	89.5	15.860	208-230/460	
5	3.7	1800	182/4T	00518ET3E184T-S	\$672	RSP	79	1.15	6.49	89.5	17.894	208-230/460	9
5	3.7	1800	182/4T	00518ET3E184T-W22	\$772	N1	105	1.25	6.45	89.5	15.860	208-230/460	
7.5	5.5	1800	213/5T	00718ET3E213T-S	\$948	RSP	131	1.15	9.07	91.7	18.898	208-230/460	9
7.5	5.5	1800	213/5T	00718ET3E213T-W22	\$1,089	N1	169	1.25	9.00	91.7	19.517	208-230/460	
10	7.5	1800	213/5T	01018ET3E215T-S	\$1,110	RSP	142	1.15	12.2	91.7	19.291	208-230/460	9
10	7.5	1800	213/5T	01018ET3E215T-W22	\$1,273	N1	192	1.25	12.4	91.7	19.517	208-230/460	
15	11	1800	254/6T	01518ET3E254T-S	\$1,610	RSP	242	1.15	18.2	92.4	22.559	208-230/460	9
15	11	1800	254/6T	01518ET3E254T-W22	\$1,848	N1	333	1.25	18.0	92.4	24.945	208-230/460	
20	15	1800	254/6T	02018ET3E256T-S	\$1,918	RSP	271	1.15	24.5	92.4	23.346	208-230/460	9
20	15	1800	254/6T	02018ET3E256T-W22	\$2,201	N1	363	1.25	24.1	93.0	24.945	208-230/460	
25	18.5	1800	284/6T	02518ET3E284T-W22	\$2,743	N1	433	1.25	29.5	93.6	27.929	208-230/460	
30	22	1800	284/6T	03018ET3E286T-W22	\$3,223	N1	482	1.25	35.1	93.6	27.929	208-230/460	
40	30	1800	324/6T	04018ET3E324T-W22	\$4,178	N1	595	1.25	48.2	94.1	31.116	208-230/460	
50	37	1800	324/6T	05018ET3E326T-W22	\$5,100	N1	634	1.25	59.2	94.5	31.116	208-230/460	
60	45	1800	364/5T	06018ET3E364T-W22	\$7,389	N1	1027	1.25	68.3	95.0	34.251	208-230/460	
60	45	1800	364/5T	06018ET3G364T-W22	\$7,389	N1	1013	1.25	68.3	95.0	34.251	460	
75	55	1800	364/5T	07518ET3E365T-W22	\$8,705	N1	1044	1.25	84.1	95.4	34.251	208-230/460	
75	55	1800	364/5T	07518ET3G365T-W22	\$8,705	N1	1045	1.25	84.1	95.4	34.251	460	
100	75	1800	404/5T	10018ET3E405T-W22	\$11,689	N1	1292	1.25	111	95.4	39.730	208-230/460	
100	75	1800	404/5T	10018ET3G405T-W22	\$11,689	N1	1278	1.25	111	95.4	39.730	460	

Notes:

9) Rolled Steel Frame

Poultry Fan, Single-Phase, TEAO

- Double shielded ball bearings
- Insulation class B
- Automatic Reset Thermal Overload Protector



HP	KW	RPM	NEMA Frame	Catalog Number	List Price	Mult. Symbol	Approx. Shipping Weight (lbs)	Service Factor	FL Amps @ High	FL. Eff (%)	"C" Dimension (in)	Voltage (V)	Notes
0.33	0.25	1800	48	.3318ES1BPFC48	\$311	G1	23	1.25	3.00	64.0	10.748	115/208-230	3;9;16
0.5	0.37	1800	C56	.5018ES1BPFC56	\$336	G1	27	1.25	4.20	65.0	11.102	115/208-230	3;9;16
0.75	0.55	1800	B56	.7518ES1BPFB56	\$414	G1	33	1.25	5.60	70.0	11.102	115/208-230	3;9
1	0.75	1800	D56	00118ES1BPF56	\$449	G1	35	1.15	7.00	72.0	12.283	115/208-230	3;9

Notes:

3) Automatic Reset Thermal Overload Protector

9) Rolled Steel Frame

16) Split-Phase Motor



Poultry Fan, Single-Phase, TEAO, Resilient Base

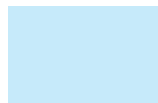
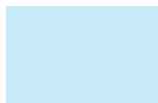
HP	KW	RPM	NEMA Frame	Catalog Number	List Price	Mult. Symbol	Approx. Shipping Weight (lbs)	Service Factor	FL Amps @ High	FL. Eff (%)	"C" Dimension (in)	Voltage (V)	Notes
0.33	0.25	1800	48	.3318ES1BRBPFC48	\$325	G1	23	1.25	3.00	64.0	11.339	115/208-230	3;9;16
0.5	0.37	1800	C56	.5018ES1BRBPFC56	\$350	G1	27	1.25	4.20	65.0	11.732	115/208-230	3;9;16
0.75	0.55	1800	B56	.7518ES1BRBPFB56	\$433	G1	33	1.25	5.60	70.0	11.811	115/208-230	3;9
1	0.75	1800	D56	00118ES1BRBPF56	\$469	G1	35	1.15	7.00	72.0	12.992	115/208-230	3;9

Notes:

3) Automatic Reset Thermal Overload Protector

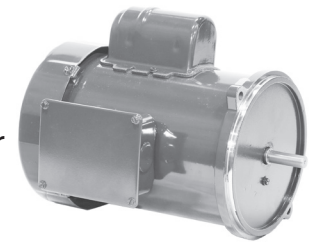
9) Rolled Steel Frame

16) Split-Phase Motor



Auger Drive, Single-Phase, TEFC, Flange Mount

- Capacitor Start
- Double shielded ball bearings
- Two bolts mounting NEMA 'N' flange
- Non-Drive-End shaft with 3/8" drive socket for manual jogging of auger
- Centrifugal start switch protected against auger drive overspeed
- Manual Reset Thermal Overload Protector



HP	kW	RPM	NEMA Frame	Catalog Number	List Price	Mult. Symbol	Approx. Shipping Weight (lbs)	Service Factor	FL Amps @ High	FL. Eff (%)	"C" Dimension (in)	Voltage (V)	Notes
0.33	0.25	1800	56NZ	.3318ES1RAD56NZ	423	A1	28	1.00	3.0	60.0	10.200	115/230	4;9;20; 40
0.50	0.37	1800	56NZ	.5018ES1RAD56NZ	475	A1	30	1.00	3.6	70.0	11.200	115/230	4;9;20; 40
0.75	0.55	1800	56NZ	.7518ES1RAD56NZ	553	A1	34	1.00	4.6	74.0	11.700	115/230	4;9;20; 40
1	0.75	1800	56NZ	00118ES1RAD56N	683	A1	35	1.00	7.0	74.0	12.480	115/230	4;9;20; 40
1.5	1.1	1800	56NZ	00158ES1RAD56N	1014	A1	40	1.00	7.7	80.0	12.870	115/230	4;9;20; 40

Notes:

- 4) Manual Reset Thermal Overload Protector
- 9) Rolled Steel Frame
- 20) Round Body - Drip Cover NOT Included
- 40) NDE shaft with 3/8" drive socket



Grain Dryer/Vane Axial Fan, Single and Three-Phase, TEAO

- Designed for air over direct coupling crop dryer vane axial fans
- Capable of continuous duty operation
- Class F insulation
- Normally-closed thermostats (one per phase)
- 30 inch extended leads
- Longer than NEMA shaft end
- Low profile lifting lugs
- Drive End with locked bearing and threaded center hole
- Spare nameplate and IP55 ingress protection



TEAO - Three-Phase - Grain Dryer

HP	RPM	NEMA Frame	Catalog Number	List Price	Mult. Symbol	FL Amps @ High	FL. Eff. (%)	"C"Dim. (in)	Voltage (V)	Notes
1.5-3	3600	143/5TZ	00336AP3EGD145TZ-S	\$750	GD3	2.41	79.70	12.401	208-230/460	9;38
3-4.5	3600	143/5TZ	00456AP3EGD145TZ-S	\$795	GD3	4.01	83.80	13.582	208-230/460	9;38
3-4.5	3600	182/4TZ	00456AP3EGD182Z-S	\$827	GD3	4.27	86.20	14.601	208-230/460	9;38
5-7.5	3600	182/4TZ	00736AP3EGD184TZ-S	\$933	GD3	6.45	87.80	16.282	208-230/460	9;38
7.5-10	3600	182/4TZ	01036AP3EGD184TZ-S	\$1,123	GD3	9.04	89.80	17.070	208-230/460	9;38
10-15	3600	213/5TZ	01536AP3EGD215TZ-S	\$1,408	GD3	12.20	92.50	17.756	208-230/460	9;38

Notes:

9) Rolled Steel Frame

38) TEAO - Totally Enclosed Air Over

TEAO - Single-Phase - Grain Dryer

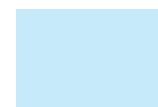
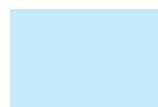
HP	RPM	NEMA Frame	Catalog Number	List Price	Mult. Symbol	FL Amps @ High	FL. Eff. (%)	"C"Dim. (in)	Voltage (V)	Notes
1.5-3	3600	145TZ	00336AP1DGD145TZ-S	\$910	GD1	7.51	73.20	13.555	230	1,9;38
3-4.5	3600	145TZ	00456AP1DGD145TZ-S	\$1,025	GD1	11.80	82.40	15.130	230	1,9;38
5-7.5	3600	182TZ	00736AP1DGD182TZ-S	\$1,296	GD1	19.80	82.90	17.070	230	1,9;38
7.5-10	3600	182TZ	01036AP1DGD182TZ-S	\$1,338	GD1	27.20	87.80	17.858	230	1,9;38
10-15	3600	215TZ	01536AP1DGD215TZ-S	\$2,024	GD1	37.80	88.00	19.720	230	1,9;38

Notes:

1) 1.0 Service Factor

9) Rolled Steel Frame

38) TEAO - Totally Enclosed Air Over



Aeration Fan Motors, Single-Phase, TEAO

- Suitable for air-over applications such as aeration fans, exhaust fans and other air handling units
- Automatic reset thermal overload protector
- IP55



HP	RPM	NEMA Frame	Catalog Number	List Price	Mult. Symbol	FL Amps @ High	FL. Eff. (%)	"C"Dim. (in)	Voltage (V)	Notes
0.75	3600	56Z	.7536AS1RAF56Z-S	\$395	R1	4.00	66.0	11.201	115/230	3,9;38
1	3600	56Z	00136AS1RAF56Z-S	\$459	R1	5.10	70.0	11.594	115/230	3,9;38
1.5	3600	56Z	00156AS1RAF56Z-S	\$601	R1	6.60	75.0	12.382	115/230	3,9;38
2	3600	143/5TZ	00236AS1RAF143TZ-S	\$643	R1	6.60	75.0	12.413	115/230	3,9;38
3	3600	143/5TZ	00336AS1RAF145TZ-S	\$783	R1	8.70	77.0	12.807	115/230	3,9;38

Notes:

3) Automatic Reset Thermal Overload Protector

9) Rolled Steel Frame

38) TEAO - Totally Enclosed Air Over

Aeration Fan Motors, Three-Phase, TEAO

- Suitable for air-over applications such as aeration fans, exhaust fans and other air handling units
- Normally-closed thermostats (one per phase)
- IP55



HP	RPM	NEMA Frame	Catalog Number	List Price	Mult. Symbol	FL Amps @ High	FL. Eff. (%)	"C"Dim. (in)	Voltage (V)	Notes
0.75	3600	56Z	.7536AS3EAF56Z-S	\$402	R1	1.13	72.0	10.380	208-230/460	9;38
1	3600	56Z	00136AS3EAF56Z-S	\$435	R1	1.51	74.0	10.380	208-230/460	9;38
1.5	3600	143/5TZ	00156AP3EAF143TZ-S	\$498	R1	1.90	82.5	11.624	208-230/460	9;38
2	3600	143/5TZ	00236AP3EAF143TZ-S	\$578	R1	2.55	84.0	12.018	208-230/460	9;38
3	3600	143/5TZ	00336AP3EAF145TZ-S	\$659	R1	3.55	85.5	12.805	208-230/460	9;38

Notes:

9) Rolled Steel Frame

38) TEAO - Totally Enclosed Air Over



IRRIGATION DUTY MOTORS

TEFC

High Starting Torque makes these motors ideal for a wide range of applications.

Single-Phase – C-Face – Foot Mount

- Shielded Ball bearings
- Class F insulation (impregnation resin and magnet wire are class H)
- With robust external metal fan
- Gasketed conduit box

HP	kW	RPM	Frame	Catalog Number	List Price	Mult. Symbol	Approx. Shipping Weight (lbs)	Service Factor	FL Amps @ High	FL. Eff (%)	“C” Dimension (in)	Voltage (V)	Notes
5	3.7	1800	184TC	00518ES1EID184TC	\$1,153	W1	121	1.15	10.7	79.0	17.050	208-230/460	11
7.5	5.5	1800	215TC	00718ES1EID215TC	\$1,471	W1	169	1.15	17.0	83.0	19.567	208-230/460	11
10	7.5	1800	215TC	01018ES1EID215TC	\$1,694	W1	193	1.15	19.5	84.0	19.567	208-230/460	11
12.5	9.2	1800	215TC	01218ES1EID215TC	\$1,888	W1	205	1.15	24.0	84.0	19.567	208-230/460	11

Note:
11) Metal fan - (not suitable for division 2)

Three-Phase – C-Face – Foot Mount

- 50/60 Hz rated (380V on nameplate - 400/415 available)
- Rated 50Hz at same horsepower 1.0 Service Factor
- Class F insulation (impregnation resin and magnet wire are class H)
- F1 mounted (field convertible to F2)
- Regreasable ball bearings (frames 254T and up)
- Gasketed conduit box
- With robust external metal fan



HP	kW	RPM	Frame	Catalog Number	List Price	Mult. Symbol	Approx. Shipping Weight (lbs)	Service Factor	FL Amps @ High	FL. Eff (%)	“C” Dimension (in)	Voltage (V)	Notes
5	3.7	1800	182/4TC	00518ET3EID184TC-W22	\$860	N1	110	1.25	6.45	89.5	15.860	230/460	11
7.5	5.5	1800	213/5TC	00718ET3EID213TC-W22	\$1,202	N1	180	1.25	9.18	91.7	19.517	230/460	11
10	7.5	1800	213/5TC	01018ET3EID215TC-W22	\$1,386	N1	194	1.25	12.4	91.7	19.517	230/460	11
15	11	1800	254/6TC	01518ET3EID254TC-W22	\$1,996	N1	353	1.25	18.0	92.4	24.945	230/460	11
20	15	1800	254/6TC	02018ET3EID256TC-W22	\$2,349	N1	403	1.25	24.1	93.0	24.945	230/460	11
25	18.5	1800	284/6TC	02518ET3EID284TC-W22	\$2,947	N1	451	1.25	29.5	93.6	27.929	230/460	11

Note:
11) Metal fan - (not suitable for division 2)



Irrigation Drive Motors

These drive motors for center pivot and linear travel irrigation towers have been used on OEM equipment for decades. Its unique design offers a stainless steel rain shield for extra protection against water and other elements typically present in an agricultural environment. These motors are rated for 50°C ambient, making it the best for this application. Also featuring double sealed ball bearings, an automatic reset thermal overload protector, corrosion resistant phosphate shaft coating and a gasketed conduit box.



HP	kW	RPM	Frame	Catalog Number	List Price	Mult. Symbol	Approx. Shipping Weight (lbs)	Service Factor	FL Amps @ High	FL. Eff (%)	"C" Dimension (in)	Voltage (V)	Notes
1	.75	1800	56C	1311731426	803	A1	31	1.0	1.4	85.5	14.58	460	3;9;15;42;45
1.5	1.1	1800	56C	1312200400	879	A1	38	1.0	2.0	86.5	13.71	460	3;9;15;42;45

Notes:

- 3) Automatic Reset Thermal Overload Protector
- 9) Rolled Steel Frame
- 15) Round Body - Drip Cover Included
- 42) Rated 50oC ambient
- 45) Also rated 380V 50Hz

Jet End Booster Pump

The Bluffton Motor Works End Jet Booster Pump is perfect for irrigation systems. The solution includes a stainless steel rain shield and canopy for vertical application, a fully gasketed conduit box, an automatic reset thermal overload protection, and stainless steel shaft end.



HP	kW	RPM	Frame	Catalog Number	List Price	Mult. Symbol	Approx. Shipping Weight (lbs)	Service Factor	FL Amps @ High	FL. Eff (%)	"C" Dimension (in)	Voltage (V)	Notes
2	1.5	3600	56J	1313171403	837	A1	43	1.5	2.8	85.5	14.22	460	3;9;15
2	1.5	3600	56Z	1313007404	851	A1	43	1.5	2.8	85.5	14.49	460	3;9;15;46

Notes:

- 3) Automatic Reset Thermal Overload Protector
- 9) Rolled Steel Frame
- 15) Round Body - Drip Cover Included
- 46) 56J shaft end with dual opposed threads (7/16-20 UNF-2A R.H and 3/8-16 UNF-2A L.H)



WEG Electric Corp. has 8 strategically located facilities so there is always a location close to you and ready to ship. WEG can supply the right solution for your needs anywhere in the world. To learn more about WEG's products and solutions or to locate a Distributor near you, please call 1-800-ASK-4WEG or visit www.weg.net.



Distributors located in all 50 states



WEG WEG Electric Corp.
6655 Sugarloaf Parkway
Duluth, GA 30097
Phone: 1-800-ASK-4WEG
www.weg.net

Please contact your authorized distributor: