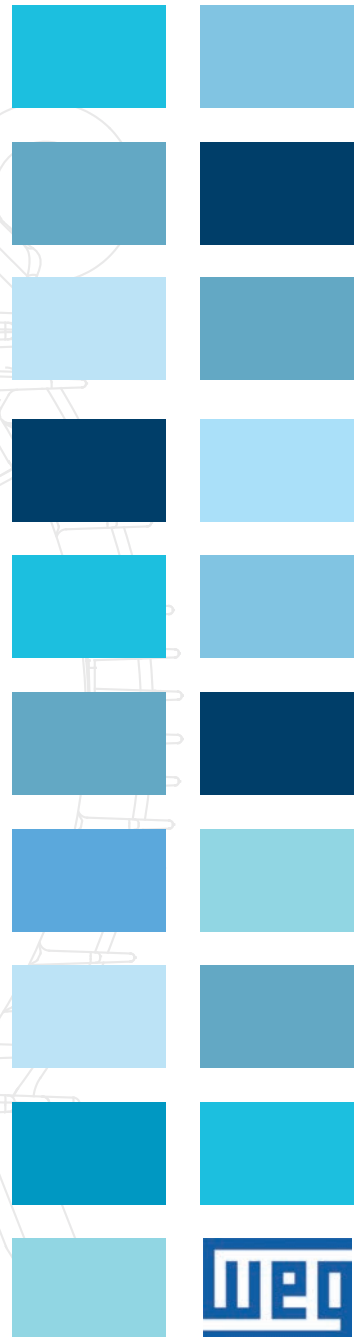


# WEG Standard Product Catalog

IEC, Farm Duty and Definite Purpose Motors

2020



Register to keep your catalog up-to-date



|                                   |       |
|-----------------------------------|-------|
| TEFC – Foot Mount .....           | A-238 |
| TEFC – Foot Mount - FF-Face ..... | A-241 |
| <b>ATEX MOTORS</b>                |       |
| TEFC – Ex ec .....                | A-243 |
| TEFC – Ex d b– IE2 .....          | A-248 |



# IEC Tru-Metric™ Motors

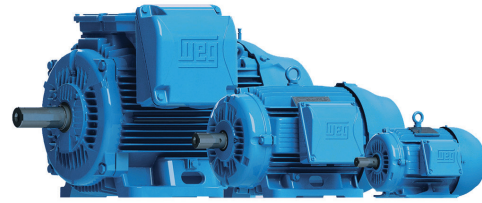
## GENERAL PURPOSE MOTORS

### TEFC - Three-Phase

This line is designed and built according to IEC Standards 60034 and 60072.

#### Standard Features:

- 60 Hz (1.25 Service Factor up to 200HP) and 50 Hz (1.0 Service Factor)
- Class F insulation (Impregnation Resin and Magnet wire are class H)
- F2 mounted as standard (F1 convertible)
- Stainless Steel Nameplate - Laser etched with high contrast background
- Regreasable ball bearings (Frames 160 and up)
- Gasketed conduit box
- Class I, Div. 2, Groups A, B, C & D – T3, Class II, Div 2, Groups F & G – T3C (Cast Iron Frames only)
- Suitable for WYE/Delta Start (W and Y voltage code motors)
- 660-690V; Sine Wave Only and with Nameplate Mod



W22 Cast Iron



Aluminum

#### Features that make a difference:

- 1.25 Service Factor for 60 Hz operation (IE3) up to 200 hp
- 1.00 Service Factor for 50 Hz operation (IE3)
- Optimized ventilation system for cooler operation and reduced noise levels
- Solid base for reduced vibration levels (Cast Iron Frames)
- Frames 225 and up can easily be F1 (B3L) converted by simply rotating the terminal box adapter or F3 by removing it
- Aluminum frames have removable feet for easy F1, F2 and F3 (B3L, B3R, B3T) conversion
- Terminal blocks

#### ADDITIONAL TECHNICAL DATA

ELECTRICAL DATA: B-46

MECHANICAL DATA: B-113

CONTACT WEG OR VISIT [WWW.WEG.NET](http://WWW.WEG.NET)

#### Inverter Rated (IE3):

**1000:1 for variable torque**

**12:1 for constant torque**

\* 460V and below only





### TEFC – Foot Mount

| HP   | kW   | RPM        | Frame | Catalog Number       | List Price | Mult. Symbol | Approx. Shipping Weight (lbs) | Service Factor | FL Amps @ High | FL Eff (%) | "C" Dimension (in) | Voltage (V)          | Notes |
|------|------|------------|-------|----------------------|------------|--------------|-------------------------------|----------------|----------------|------------|--------------------|----------------------|-------|
| 0.25 | 0.18 | 3600//3000 | 63    | .1836EP3EAL63-W22    | \$280      | T1           | 14                            | 1.15           | 0.48           | 68.0       | 8.504              | 230/460//190/380     | 2;7   |
|      |      | 1800//1500 | 63    | .1818EP3EAL63-W22    | \$267      | T1           | 16                            | 1.15           | 0.51           | 69.0       | 8.504              | 230/460//190/380     | 2;7   |
|      |      | 1200//1000 | 71    | .1812EP3EAL71-W22    | \$338      | T1           | 22                            | 1.15           | 0.77           | 61.0       | 9.764              | 230/460//190/380     | 2;7   |
|      |      | 900//750   | 80    | .1809EP3EAL80-W22    | \$540      | T1           | 30                            | 1.25           | 0.80           | 50.5       | 10.866             | 230/460//190/380     | 2;7   |
|      |      | 900//750   | 80    | .1809EP3WAL80-W22    | \$540      | T1           | 28                            | 1.15           | 0.80           | 50.5       | 10.866             | 460//220-240/380-415 | 2;7   |
| 0.33 | 0.25 | 3600//3000 | 63    | .2536EP3EAL63-W22    | \$286      | T1           | 16                            | 1.15           | 0.62           | 70.0       | 8.504              | 230/460//190/380     | 2;7   |
|      |      | 1800//1500 | 71    | .2518EP3EAL71-W22    | \$282      | T1           | 24                            | 1.15           | 0.68           | 73.0       | 9.764              | 230/460//190/380     | 2;7   |
|      |      | 1200//1000 | 71    | .2512EP3EAL71-W22    | \$363      | T1           | 24                            | 1.15           | 1.00           | 64.0       | 9.764              | 230/460//190/380     | 2;7   |
|      |      | 900//750   | 80    | .2509EP3EAL80-W22    | \$583      | T1           | 29                            | 1.15           | 0.87           | 57.5       | 10.866             | 230/460//190/380     | 2;7   |
|      |      | 900//750   | 80    | .2509EP3WAL80-W22    | \$583      | T1           | 32                            | 1.15           | 0.87           | 57.5       | 10.866             | 460//220-240/380-415 | 2;7   |
| 0.5  | 0.37 | 3600//3000 | 71    | .3736EP3EAL71-W22    | \$309      | T1           | 22                            | 1.15           | 0.83           | 73.0       | 9.764              | 230/460//190/380     | 2;7   |
|      |      | 1800//1500 | 71    | .3718EP3EAL71-W22    | \$290      | T1           | 24                            | 1.15           | 1.06           | 73.0       | 9.764              | 230/460//190/380     | 2;7   |
|      |      | 1200//1000 | 80    | .3712EP3EAL80-W22    | \$378      | T1           | 27                            | 1.15           | 1.07           | 64.0       | 10.866             | 230/460//190/380     | 2;7   |
|      |      | 900//750   | 90S/L | .3709EP3EAL90S-W22   | \$662      | T1           | 40                            | 1.15           | 1.35           | 61.5       | 12.953             | 230/460//190/380     | 2;7   |
|      |      | 900//750   | 90S/L | .3709EP3WAL90S/L-W22 | \$662      | T1           | 40                            | 1.15           | 1.35           | 61.5       | 12.953             | 460//220-240/380-415 | 2;7   |
| 0.75 | 0.55 | 3600//3000 | 71    | .5536EP3EAL71-W22    | \$316      | T1           | 23                            | 1.15           | 1.14           | 76.0       | 9.764              | 230/460//190/380     | 2;7   |
|      |      | 1800//1500 | 80    | .5518EP3EAL80-W22    | \$333      | T1           | 28                            | 1.15           | 1.25           | 77.0       | 10.866             | 230/460//190/380     | 2;7   |
|      |      | 1200//1000 | 80    | .5512EP3EAL80-W22    | \$405      | T1           | 32                            | 1.15           | 1.63           | 66.0       | 10.866             | 230/460//190/380     | 2;7   |
|      |      | 900//750   | 90S/L | .5509EP3EAL90L-W22   | \$696      | T1           | 46                            | 1.15           | 2.12           | 62.5       | 12.953             | 230/460//190/380     | 2;7   |
|      |      | 900//750   | 90S/L | .5509EP3WAL90S/L-W22 | \$696      | T1           | 58                            | 1.15           | 2.12           | 62.5       | 12.953             | 460//220-240/380-415 | 2;7   |
| 1    | 0.75 | 3600//3000 | 80    | .7536ET3WAL80-W22    | \$397      | T1           | 27                            | 1.25           | 1.43           | 81.5       | 10.866             | 460//220-240/380-415 | 2;7   |
|      |      | 1800//1500 | 90S/L | .7518ET3EAL90S/L-W22 | \$420      | T1           | 42                            | 1.25           | 1.47           | 85.5       | 12.953             | 230/460//190/380     | 2;7   |
|      |      | 1800//1500 | 90S/L | .7518ET3WAL90S/L-W22 | \$420      | T1           | 43                            | 1.25           | 1.47           | 85.5       | 12.953             | 460//220-240/380-415 | 2;7   |
|      |      | 1200//1000 | 90S/L | .7512ET3EAL90S-W22   | \$537      | T1           | 47                            | 1.25           | 1.68           | 82.5       | 12.953             | 230/460//190/380     | 2;7   |
|      |      | 1200//1000 | 90S/L | .7512ET3WAL90S-W22   | \$537      | T1           | 51                            | 1.25           | 1.68           | 82.5       | 12.953             | 460//220-240/380-415 | 2;7   |
|      |      | 900//750   | 100L  | .7509ET3EAL100L-W22  | \$869      | T1           | 68                            | 1.25           | 2.11           | 75.5       | 14.803             | 230/460//190/380     | 2;7   |
| 1.5  | 1.1  | 3600//3000 | 80    | .00136ET3EAL80-W22   | \$444      | T1           | 29                            | 1.25           | 2.03           | 84.0       | 10.866             | 230/460//190/380     | 2;7   |
|      |      | 3600//3000 | 80    | .00136ET3WAL80-W22   | \$444      | T1           | 30                            | 1.25           | 2.03           | 84.0       | 10.866             | 460//220-240/380-415 | 2;7   |
|      |      | 1800//1500 | 90S/L | .00118ET3EAL90S-W22  | \$470      | T1           | 44                            | 1.25           | 2.05           | 86.5       | 12.953             | 230/460//190/380     | 2;7   |
|      |      | 1800//1500 | 90S/L | .00118ET3WAL90S-W22  | \$470      | T1           | 44                            | 1.25           | 2.05           | 86.5       | 12.953             | 460//220-240/380-415 | 2;7   |
|      |      | 1200//1000 | 100L  | .00112ET3EAL100L-W22 | \$746      | T1           | 80                            | 1.00           | 2.32           | 87.5       | 14.803             | 230/460//190/380     | 2;7   |
|      |      | 3600//3000 | 90S/L | .00156ET3EAL90S-W22  | \$504      | T1           | 44                            | 1.25           | 2.69           | 85.5       | 12.953             | 230/460//190/380     | 2;7   |
| 2    | 1.5  | 3600//3000 | 90S/L | .00156ET3WAL90S-W22  | \$504      | T1           | 44                            | 1.25           | 2.69           | 85.5       | 12.953             | 460//220-240/380-415 | 2;7   |
|      |      | 1800//1500 | 90S/L | .00158ET3EAL90L-W22  | \$524      | T1           | 49                            | 1.25           | 2.79           | 86.5       | 12.953             | 230/460//190/380     | 2;7   |
|      |      | 1800//1500 | 90S/L | .00158ET3WAL90L-W22  | \$524      | T1           | 49                            | 1.25           | 2.79           | 86.5       | 12.953             | 460//220-240/380-415 | 2;7   |
|      |      | 1200//1000 | 100L  | .00152ET3WAL100L-W22 | \$812      | T1           | 76                            | 1.25           | 3.13           | 88.5       | 16.535             | 460//220-240/380-415 | 2;7   |
|      |      | 1200//1000 | 112M  | .00152ET3EAL112M-W22 | \$923      | T1           | 93                            | 1.25           | 3.08           | 88.5       | 15.472             | 230/460//190/380     | 2;7   |
|      |      | 1200//1000 | 112M  | .00152ET3WAL112M-W22 | \$923      | T1           | 93                            | 1.25           | 3.08           | 88.5       | 15.472             | 460//220-240/380-415 | 2;7   |
|      |      | 900//750   | 112M  | .00159ET3YAL112M-W22 | \$1,001    | T1           | 90                            | 1.25           | 3.50           | 84.0       | 15.472             | 460//380-415/660-690 | 2;7   |
|      |      | 3600//3000 | 90S/L | .00236ET3EAL90L-W22  | \$756      | T1           | 50                            | 1.25           | 3.85           | 86.5       | 12.953             | 230/460//190/380     | 2;7   |
| 3    | 2.2  | 3600//3000 | 90S/L | .00236ET3WAL90L-W22  | \$756      | T1           | 49                            | 1.25           | 3.85           | 86.5       | 12.953             | 460//220-240/380-415 | 2;7   |
|      |      | 1800//1500 | 100L  | .00218ET3EAL100L-W22 | \$630      | T1           | 66                            | 1.25           | 4.11           | 89.5       | 14.803             | 230/460//190/380     | 2;7   |
|      |      | 1800//1500 | 100L  | .00218ET3WAL100L-W22 | \$630      | T1           | 66                            | 1.25           | 4.11           | 89.5       | 14.803             | 460//220-240/380-415 | 2;7   |
|      |      | 1200//1000 | 132S  | .00212ET3EAL132S-W22 | \$1,166    | T1           | 131                           | 1.25           | 4.41           | 89.5       | 19.291             | 230/460//190/380     | 2;7   |
|      |      | 1200//1000 | 132S  | .00212ET3YAL132S-W22 | \$1,166    | T1           | 136                           | 1.25           | 4.41           | 89.5       | 19.291             | 460//380-415/660-690 | 2;7   |
|      |      | 900//750   | 132S  | .00209ET3YAL132S-W22 | \$1,412    | T1           | 145                           | 1.25           | 4.75           | 85.5       | 19.291             | 460//380-415/660-690 | 2;7   |

continued on next page

Please refer to back cover for description of "NOTES"

For detailed specifications, data sheets, drawings and performance curves visit <http://www.weg.net>



TEFC – Foot Mount - continued

| HP        | kW   | RPM       | Frame  | Catalog Number      | List Price | Mult. Symbol        | Approx. Shipping Weight (lbs) | Service Factor | FL Amps @ High | FL Eff (%) | "C" Dimension (in) | Voltage (V)          | Notes  |
|-----------|------|-----------|--------|---------------------|------------|---------------------|-------------------------------|----------------|----------------|------------|--------------------|----------------------|--------|
| 4         | 3    | 3600/3000 | 100L   | 00336ET3EAL100L-W22 | \$805      | T1                  | 65                            | 1.25           | 5.01           | 88.5       | 14.803             | 230/460//190/380     | 2;7    |
|           |      | 3600/3000 | 100L   | 00336ET3WAL100L-W22 | \$805      | T1                  | 65                            | 1.25           | 5.01           | 88.5       | 14.803             | 460//220-240/380-415 | 2;7    |
|           |      | 1800/1500 | 100L   | 00318ET3EAL100L-W22 | \$672      | T1                  | 77                            | 1.25           | 5.33           | 89.5       | 14.803             | 230/460//190/380     | 2;7    |
|           |      | 1800/1500 | 100L   | 00318ET3WAL100L-W22 | \$672      | T1                  | 77                            | 1.25           | 5.33           | 89.5       | 14.803             | 460//220-240/380-415 | 2;7    |
|           |      | 1200/1000 | 132M   | 00312ET3EAL132M-W22 | \$1,247    | T1                  | 137                           | 1.25           | 6.01           | 89.5       | 19.291             | 230/460//190/380     | 2;7    |
|           |      | 1200/1000 | 132M   | 00312ET3YAL132M-W22 | \$1,247    | T1                  | 147                           | 1.25           | 6.01           | 89.5       | 19.291             | 460//380-415/660-690 | 2;7    |
|           |      | 900/750   | 132M   | 00309ET3EAL132M-W22 | \$1,610    | T1                  | 193                           | 1.25           | 6.29           | 85.5       | 19.291             | 230/460//190/380     | 2;7    |
|           |      | 900/750   | 132M   | 00309ET3YAL132M-W22 | \$1,610    | T1                  | 156                           | 1.25           | 6.29           | 85.5       | 19.291             | 460//380-415/660-690 | 2;7    |
| 5.5       | 4    | 3600/3000 | 112M   | 00436ET3EAL112M-W22 | \$874      | T1                  | 86                            | 1.25           | 6.67           | 88.5       | 15.472             | 230/460//190/380     | 2;7    |
|           |      | 3600/3000 | 112M   | 00436ET3YAL112M-W22 | \$874      | T1                  | 86                            | 1.25           | 6.67           | 88.5       | 15.472             | 460//380-415/660-690 | 2;7    |
|           |      | 1800/1500 | 112M   | 00418ET3EAL112M-W22 | \$679      | T1                  | 93                            | 1.25           | 7.28           | 89.5       | 15.472             | 230/460//190/380     | 2;7    |
|           |      | 1800/1500 | 112M   | 00418ET3YAL112M-W22 | \$679      | T1                  | 93                            | 1.25           | 7.28           | 89.5       | 15.472             | 460//380-415/660-690 | 2;7    |
|           |      | 1200/1000 | 132M   | 00412ET3EAL132M-W22 | \$1,254    | T1                  | 147                           | 1.25           | 7.90           | 89.5       | 19.291             | 230/460//190/380     | 2;7    |
|           |      | 1200/1000 | 132M   | 00412ET3YAL132M-W22 | \$1,254    | T1                  | 147                           | 1.25           | 7.90           | 89.5       | 19.291             | 460//380-415/660-690 | 2;7    |
|           |      | 900/750   | 160M   | 00409ET3Y160M-W22   | \$1,947    | T1                  | 299                           | 1.25           | 8.17           | 86.5       | 23.543             | 460//380-415/660-690 | 7      |
|           |      | 7.5       | 5.5    | 3600/3000           | 132S       | 00536ET3EAL132S-W22 | \$1,144                       | T1             | 136            | 1.25       | 8.97               | 89.5                 | 19.291 |
| 3600/3000 | 132S |           |        | 00536ET3YAL132S-W22 | \$1,144    | T1                  | 136                           | 1.25           | 8.97           | 89.5       | 19.291             | 460//380-415/660-690 | 2;7    |
| 1800/1500 | 132S |           |        | 00518ET3EAL132S-W22 | \$932      | T1                  | 142                           | 1.25           | 9.07           | 91.7       | 19.291             | 230/460//190/380     | 2;7    |
| 1800/1500 | 132S |           |        | 00518ET3YAL132S-W22 | \$932      | T1                  | 142                           | 1.25           | 9.07           | 91.7       | 19.291             | 460//380-415/660-690 | 2;7    |
| 1200/1000 | 160M |           |        | 00512ET3Y160M-W22   | \$1,760    | T1                  | 291                           | 1.25           | 9.48           | 91.0       | 23.543             | 460//380-415/660-690 | 7      |
| 900/750   | 160M |           |        | 00509ET3Y160M-W22   | \$2,244    | T1                  | 306                           | 1.25           | 11.1           | 87.5       | 23.543             | 460//380-415/660-690 | 7      |
| 10        | 7.5  | 3600/3000 | 132S   | 00736ET3EAL132S-W22 | \$1,292    | T1                  | 148                           | 1.25           | 12.3           | 90.2       | 19.291             | 230/460//190/380     | 2;7    |
|           |      | 3600/3000 | 132S   | 00736ET3YAL132S-W22 | \$1,292    | T1                  | 147                           | 1.25           | 12.3           | 90.2       | 19.291             | 460//380-415/660-690 | 2;7    |
|           |      | 1800/1500 | 132M   | 00718ET3EAL132M-W22 | \$1,110    | T1                  | 159                           | 1.25           | 12.2           | 91.7       | 19.291             | 230/460//190/380     | 2;7    |
|           |      | 1800/1500 | 132M   | 00718ET3YAL132M-W22 | \$1,110    | T1                  | 159                           | 1.25           | 12.2           | 91.7       | 19.291             | 460//380-415/660-690 | 2;7    |
|           |      | 1200/1000 | 160M   | 00712ET3Y160M-W22   | \$2,306    | T1                  | 306                           | 1.25           | 13.1           | 91.0       | 23.543             | 460//380-415/660-690 | 7      |
|           |      | 900/750   | 160L   | 00709ET3Y160L-W22   | \$2,774    | T1                  | 352                           | 1.25           | 15.2           | 88.5       | 25.276             | 460//380-415/660-690 | 7      |
| 15        | 11   | 3600/3000 | 160M   | 01136ET3Y160M-W22   | \$2,102    | T1                  | 304                           | 1.25           | 17.9           | 91.7       | 23.543             | 460//380-415/660-690 | 7      |
|           |      | 1800/1500 | 160M   | 01118ET3Y160M-W22   | \$1,726    | T1                  | 321                           | 1.25           | 18.2           | 92.4       | 23.543             | 460//380-415/660-690 | 7      |
|           |      | 1200/1000 | 160L   | 01112ET3Y160L-W22   | \$3,160    | T1                  | 354                           | 1.25           | 18.8           | 91.7       | 25.276             | 460//380-415/660-690 | 7      |
|           |      | 900/750   | 180L   | 01109ET3Y180L-W22   | \$4,031    | T1                  | 419                           | 1.25           | 19.5           | 89.5       | 27.638             | 460//380-415/660-690 | 7      |
| 20        | 15   | 3600/3000 | 160M   | 01536ET3Y160M-W22   | \$2,413    | T1                  | 320                           | 1.25           | 24.4           | 91.7       | 23.543             | 460//380-415/660-690 | 7      |
|           |      | 1800/1500 | 160L   | 01518ET3Y160L-W22   | \$2,118    | T1                  | 375                           | 1.25           | 25.0           | 93.0       | 25.276             | 460//380-415/660-690 | 7      |
|           |      | 1200/1000 | 180L   | 01512ET3Y180L-W22   | \$3,884    | T1                  | 447                           | 1.25           | 24.7           | 91.7       | 27.638             | 460//380-415/660-690 | 7      |
|           |      | 900/750   | 200L   | 01509ET3Y200L-W22   | \$5,158    | T1                  | 517                           | 1.25           | 28.0           | 91.0       | 30.197             | 460//380-415/660-690 | 7      |
| 25        | 18.5 | 3600/3000 | 160L   | 01836ET3Y160L-W22   | \$2,925    | T1                  | 353                           | 1.25           | 29.9           | 92.4       | 25.276             | 460//380-415/660-690 | 7      |
|           |      | 1800/1500 | 180M   | 01818ET3Y180M-W22   | \$2,689    | T1                  | 436                           | 1.25           | 30.6           | 93.6       | 26.142             | 460//380-415/660-690 | 7      |
|           |      | 1200/1000 | 200L   | 01812ET3Y200L-W22   | \$4,886    | T1                  | 552                           | 1.25           | 30.8           | 93.0       | 30.197             | 460//380-415/660-690 | 7      |
|           |      | 900/750   | 225S/M | 01809ET3Y225S/M-W22 | \$5,902    | T1                  | 830                           | 1.25           | 31.6           | 93.0       | 34.882             | 460//380-415/660-690 | 7      |
| 30        | 22   | 3600/3000 | 180M   | 02236ET3Y180M-W22   | \$3,492    | T1                  | 424                           | 1.25           | 34.7           | 92.4       | 26.142             | 460//380-415/660-690 | 7      |
|           |      | 1800/1500 | 180L   | 02218ET3Y180L-W22   | \$3,225    | T1                  | 457                           | 1.25           | 36.0           | 93.6       | 27.638             | 460//380-415/660-690 | 7      |
|           |      | 1200/1000 | 200L   | 02212ET3Y200L-W22   | \$4,924    | T1                  | 601                           | 1.25           | 37.1           | 93.0       | 30.197             | 460//380-415/660-690 | 7      |
|           |      | 900/750   | 225S/M | 02209ET3Y225S/M-W22 | \$7,506    | T1                  | 885                           | 1.25           | 37.6           | 93.0       | 34.882             | 460//380-415/660-690 | 7      |

continued on next page

Please refer to back cover for description of "NOTES"

For detailed specifications, data sheets, drawings and performance curves visit [http:// www.weg.net](http://www.weg.net)

Data subject to change without notice.

Can't find what you are looking for? Call 1-800-ASK-4WEG (275-4934)

GENERAL PURPOSE MOTORS

TEFC – Foot Mount - *continued*

| HP  | kW  | RPM        | Frame  | Catalog Number                      | List Price | Mult. Symbol | Approx. Shipping Weight (lbs) | Service Factor | FL Amps @ High | FL Eff (%) | “C” Dimension (in) | Voltage (V)          | Notes |
|-----|-----|------------|--------|-------------------------------------|------------|--------------|-------------------------------|----------------|----------------|------------|--------------------|----------------------|-------|
| 40  | 30  | 3600//3000 | 200L   | <a href="#">03036ET3Y200L-W22</a>   | \$4,877    | T1           | 575                           | 1.25           | 47.1           | 93.0       | 30.197             | 460//380-415/660-690 | 7     |
|     |     | 1800//1500 | 200L   | <a href="#">03018ET3Y200L-W22</a>   | \$4,312    | T1           | 580                           | 1.25           | 49.4           | 94.1       | 30.197             | 460//380-415/660-690 | 7     |
|     |     | 1200//1000 | 225S/M | <a href="#">03012ET3Y225S/M-W22</a> | \$7,689    | T1           | 1055                          | 1.25           | 47.6           | 94.1       | 34.882             | 460//380-415/660-690 | 7     |
|     |     | 900//750   | 250S/M | <a href="#">03009ET3Y250S/M-W22</a> | \$8,858    | T1           | 1078                          | 1.25           | 50.9           | 93.6       | 37.992             | 460//380-415/660-690 | 7     |
| 50  | 37  | 3600//3000 | 200L   | <a href="#">03736ET3Y200L-W22</a>   | \$5,487    | T1           | 587                           | 1.25           | 61.3           | 93.6       | 30.197             | 460//380-415/660-690 | 7     |
|     |     | 1800//1500 | 225S/M | <a href="#">03718ET3Y225S/M-W22</a> | \$6,984    | T1           | 1041                          | 1.25           | 58.5           | 94.5       | 34.882             | 460//380-415/660-690 | 7     |
|     |     | 1200//1000 | 250S/M | <a href="#">03712ET3Y250S/M-W22</a> | \$9,947    | T1           | 1266                          | 1.25           | 58.8           | 94.1       | 37.992             | 460//380-415/660-690 | 7     |
|     |     | 900//750   | 280S/M | <a href="#">03709ET3Y280S/M-W22</a> | \$11,751   | T1           | 1481                          | 1.25           | 64.1           | 94.1       | 42.165             | 460//380-415/660-690 | 7     |
| 60  | 45  | 3600//3000 | 225S/M | <a href="#">04536ET3Y225S/M-W22</a> | \$7,961    | T1           | 1053                          | 1.25           | 66.7           | 94.1       | 33.701             | 460//380-415/660-690 | 7     |
|     |     | 1800//1500 | 225S/M | <a href="#">04518ET3Y225S/M-W22</a> | \$7,391    | T1           | 1022                          | 1.25           | 69.9           | 95.0       | 34.882             | 460//380-415/660-690 | 7     |
|     |     | 1200//1000 | 280S/M | <a href="#">04512ET3Y280S/M-W22</a> | \$11,023   | T1           | 1681                          | 1.25           | 74.7           | 94.5       | 42.165             | 460//380-415/660-690 | 7     |
|     |     | 900//750   | 280S/M | <a href="#">04509ET3Y280S/M-W22</a> | \$12,815   | T1           | 1631                          | 1.25           | 77.0           | 94.1       | 42.165             | 460//380-415/660-690 | 7     |
| 75  | 55  | 3600//3000 | 250S/M | <a href="#">05536ET3Y250S/M-W22</a> | \$9,847    | T1           | 1259                          | 1.25           | 80.3           | 94.5       | 37.992             | 460//380-415/660-690 | 7     |
|     |     | 1800//1500 | 250S/M | <a href="#">05518ET3Y250S/M-W22</a> | \$8,961    | T1           | 1206                          | 1.25           | 85.1           | 95.4       | 37.992             | 460//380-415/660-690 | 7     |
|     |     | 1200//1000 | 280S/M | <a href="#">05512ET3Y280S/M-W22</a> | \$13,622   | T1           | 1794                          | 1.25           | 90.2           | 94.5       | 42.165             | 460//380-415/660-690 | 7     |
|     |     | 900//750   | 315S/M | <a href="#">05509ET3Y315S/M-W22</a> | \$15,379   | T1           | 2436                          | 1.25           | 93.7           | 94.5       | 50.157             | 460//380-415/660-690 | 7     |
| 100 | 75  | 3600//3000 | 280S/M | <a href="#">07536ET3Y280S/M-W22</a> | \$12,472   | T1           | 1776                          | 1.25           | 111            | 94.5       | 42.165             | 460//380-415/660-690 | 7     |
|     |     | 1800//1500 | 280S/M | <a href="#">07518ET3Y280S/M-W22</a> | \$12,353   | T1           | 1738                          | 1.25           | 116            | 95.4       | 42.165             | 460//380-415/660-690 | 7     |
|     |     | 1200//1000 | 315S/M | <a href="#">07512ET3Y315S/M-W22</a> | \$16,479   | T1           | 2399                          | 1.25           | 122            | 95.0       | 50.157             | 460//380-415/660-690 | 7     |
|     |     | 900//750   | 315S/M | <a href="#">07509ET3Y315S/M-W22</a> | \$18,647   | T1           | 2701                          | 1.25           | 127            | 95.0       | 50.157             | 460//380-415/660-690 | 7     |
| 125 | 90  | 3600//3000 | 280S/M | <a href="#">09036ET3Y280S/M-W22</a> | \$16,720   | T1           | 1862                          | 1.25           | 132            | 95.0       | 42.165             | 460//380-415/660-690 | 7     |
|     |     | 1800//1500 | 280S/M | <a href="#">09018ET3Y280S/M-W22</a> | \$15,220   | T1           | 1835                          | 1.25           | 139            | 95.4       | 42.165             | 460//380-415/660-690 | 7     |
|     |     | 1200//1000 | 315S/M | <a href="#">09012ET3Y315S/M-W22</a> | \$19,448   | T1           | 2601                          | 1.25           | 146            | 95.4       | 50.157             | 460//380-415/660-690 | 7     |
|     |     | 900//750   | 315S/M | <a href="#">09009ET3Y315S/M-W22</a> | \$21,288   | T1           | 2884                          | 1.25           | 152            | 95.0       | 50.157             | 460//380-415/660-690 | 7     |
| 150 | 110 | 3600//3000 | 315S/M | <a href="#">11036ET3Y315S/M-W22</a> | \$21,018   | T1           | 2382                          | 1.25           | 163            | 95.0       | 48.976             | 460//380-415/660-690 | 7     |
|     |     | 1800//1500 | 280S/M | <a href="#">11018ET3Y280S/M-W22</a> | \$17,078   | T1           | 2210                          | 1.25           | 170            | 95.8       | 42.165             | 460//380-415/660-690 | 7     |
|     |     | 1200//1000 | 315S/M | <a href="#">11012ET3Y315S/M-W22</a> | \$22,507   | T1           | 2730                          | 1.25           | 178            | 95.8       | 50.157             | 460//380-415/660-690 | 7     |
|     |     | 900//750   | 315L   | <a href="#">11009ET3Y315L-W22</a>   | \$27,910   | T1           | 3008                          | 1.25           | 186            | 95.4       | 54.685             | 460//380-415/660-690 | 7     |
| 175 | 132 | 3600//3000 | 315S/M | <a href="#">13236ET3Y315S/M-W22</a> | \$23,180   | T1           | 2662                          | 1.25           | 193            | 95.4       | 48.976             | 460//380-415/660-690 | 7;4,3 |
|     |     | 1800//1500 | 315S/M | <a href="#">13218ET3Y315S/M-W22</a> | \$19,732   | T1           | 2540                          | 1.25           | 203            | 96.2       | 50.157             | 460//380-415/660-690 | 7     |
|     |     | 1200//1000 | 315S/M | <a href="#">13212ET3Y315S/M-W22</a> | \$25,642   | T1           | 3031                          | 1.25           | 214            | 95.8       | 50.157             | 460//380-415/660-690 | 7     |
|     |     | 900//750   | 315L   | <a href="#">13209ET3Y315L-W22</a>   | \$33,687   | T1           | 3796                          | 1.25           | 223            | 95.4       | 54.685             | 460//380-415/660-690 | 7;4,3 |
| 200 | 150 | 3600//3000 | 315S/M | <a href="#">15036ET3Y315S/M-W22</a> | \$26,249   | T1           | 2682                          | 1.25           | 219            | 95.4       | 48.976             | 460//380-415/660-690 | 7     |
|     |     | 1800//1500 | 315S/M | <a href="#">15018ET3Y315S/M-W22</a> | \$21,772   | T1           | 2784                          | 1.25           | 228            | 96.2       | 50.157             | 460//380-415/660-690 | 7     |
|     |     | 1200//1000 | 315L   | <a href="#">15012ET3Y315L-W22</a>   | \$28,298   | T1           | 3557                          | 1.15           | 240            | 95.8       | 54.685             | 460//380-415/660-690 | 7;4,3 |
| 250 | 185 | 3600//3000 | 315S/M | <a href="#">18536ET3Y315S/M-W22</a> | \$26,529   | T1           | 2900                          | 1.25           | 269            | 95.8       | 48.976             | 460//380-415/660-690 | 7     |
|     |     | 1800//1500 | 315S/M | <a href="#">18518ET3Y315S/M-W22</a> | \$26,247   | T1           | 2948                          | 1.25           | 284            | 96.2       | 50.157             | 460//380-415/660-690 | 7     |
|     |     | 1200//1000 | 355M/L | <a href="#">18512ET3Y355M/L-W22</a> | \$43,876   | T1           | 3666                          | 1.15           | 311            | 95.8       | 58.346             | 460//380-415/660-690 | 7     |
| 300 | 220 | 3600//3000 | 315L   | <a href="#">22036ET3Y315L-W22</a>   | \$44,212   | T1           | 3468                          | 1.25           | 315            | 96.2       | 53.268             | 460//380-415/660-690 | 7;4,3 |
|     |     | 1800//1500 | 315L   | <a href="#">22018ET3Y315L-W22</a>   | \$36,234   | T1           | 3113                          | 1.25           | 338            | 96.2       | 54.685             | 460//380-415/660-690 | 7;4,3 |
|     |     | 1200//1000 | 355M/L | <a href="#">22012ET3Y355M/L-W22</a> | \$46,322   | T1           | 4507                          | 1.15           | 370            | 95.8       | 58.346             | 460//380-415/660-690 | 7;4,3 |
| 350 | 260 | 3600//3000 | 355M/L | <a href="#">26036ET3Y355M/L-W22</a> | \$50,637   | T1           | 4975                          | 1.15           | 373            | 96.2       | 55.591             | 460//380-415/660-690 | 7;4,3 |
|     |     | 1800//1500 | 355M/L | <a href="#">26018ET3Y355M/L-W22</a> | \$43,761   | T1           | 4218                          | 1.15           | 399            | 96.2       | 58.346             | 460//380-415/660-690 | 7;4,3 |
|     |     | 1200//1000 | 355M/L | <a href="#">26012ET3Y355M/L-W22</a> | \$53,001   | T1           | 5075                          | 1.15           | 436            | 95.9       | 58.346             | 460//380-415/660-690 | 7;4,3 |
| 400 | 300 | 3600//3000 | 355M/L | <a href="#">30036ET3Y355M/L-W22</a> | \$66,321   | T1           | 4034                          | 1.15           | 315            | 96.2       | 55.591             | 460//380-415/660-690 | 7;4,3 |
|     |     | 1800//1500 | 355M/L | <a href="#">30018ET3Y355M/L-W22</a> | \$60,292   | T1           | 4337                          | 1.00           | 466            | 96.2       | 58.346             | 460//380-415/660-690 | 7;4,3 |
|     |     | 1800//1500 | 355M/L | <a href="#">33018ET3Y355M/L-W22</a> | \$64,557   | T1           | 4906                          | 1.15           | 505            | 96.5       | 58.346             | 460//380-415/660-690 | 7;4,3 |

Please refer to back cover for description of “NOTES”

For detailed specifications, data sheets, drawings and performance curves visit <http://www.weg.net>





TEFC – Foot Mount - FF-Face Motors

| HP   | kW   | RPM        | Frame | Catalog Number       | List Price | Mult. Symbol | Approx. Shipping Weight (lbs) | Service Factor | FL Amps @ High | FL Eff (%) | "C" Dimension (in) | Voltage (V)          | Notes |
|------|------|------------|-------|----------------------|------------|--------------|-------------------------------|----------------|----------------|------------|--------------------|----------------------|-------|
| 0.5  | 0.37 | 1800//1500 | 71    | .3718EP3EAL71FF-W22  | \$340      | T1           | 26                            | 1.15           | 1.06           | 73.0       | 9.764              | 230/460//380-415     | 2;7   |
|      |      | 3600//3000 | 71    | .5536EP3EAL71FF-W22  | \$366      | T1           | 23                            | 1.15           | 1.14           | 76.0       | 9.764              | 230/460//380-415     | 2;7   |
| 0.75 | 0.55 | 1800//1500 | 80    | .5518EP3EAL80FF-W22  | \$383      | T1           | 28                            | 1.15           | 1.25           | 77.0       | 10.866             | 230/460//380-415     | 2;7   |
|      |      | 1800//1500 | 90S/L | .7518ET3EAL90S/LFF-W | \$479      | T1           | 42                            | 1.25           | 1.47           | 85.5       | 12.953             | 230/460//380-415     | 2;7   |
| 1    | 0.75 | 1800//1500 | 90S/L | .7518ET3WAL90S/LFF-W | \$479      | T1           | 43                            | 1.25           | 1.47           | 85.5       | 12.953             | 460//220-240/380-415 | 2;7   |
|      |      | 1800//1500 | 90S/L | 00158ET3EAL90LFF-W22 | \$583      | T1           | 49                            | 1.25           | 2.79           | 86.5       | 12.953             | 208-230/460//380-415 | 2;7   |
| 2    | 1.5  | 1800//1500 | 90L   | 00158ET3WAL90LFF-W22 | \$583      | T1           | 51                            | 1.25           | 2.79           | 86.5       | 12.953             | 460//220-240/380-415 |       |
|      |      | 1200//1000 | 100L  | 00152ET3WAL100LFF-W2 | \$882      | T1           | 76                            | 1.25           | 3.04           | 88.5       | 14.803             | 460//220-240/380-415 | 2;7   |
|      |      | 3600//3000 | 90L   | 00236ET3WAL90LFF-W22 | \$815      | T1           | 46                            | 1.25           | 3.85           | 86.5       | 12.953             | 460//220-240/380-415 |       |
| 3    | 2.2  | 1800//1500 | 100L  | 00218ET3EAL100LFF-W2 | \$700      | T1           | 66                            | 1.25           | 4.11           | 89.5       | 14.803             | 230/460//380-415     | 2;7   |
|      |      | 1800//1500 | 100L  | 00218ET3WAL100LFF-W2 | \$700      | T1           | 68                            | 1.25           | 4.05           | 87.5       | 14.803             | 460//220-240/380-415 |       |
| 4    | 3    | 1800//1500 | 100L  | 00318ET3WAL100LFF-W2 | \$742      | T1           | 77                            | 1.25           | 5.33           | 89.5       | 14.803             | 460//220-240/380-415 | 2;7   |
| 5.5  | 4    | 3600//3000 | 112M  | 00436ET3YAL112MFF-W2 | \$944      | T1           | 86                            | 1.25           | 6.67           | 88.5       | 15.472             | 460//380-415         | 2;7   |
|      |      | 1800//1500 | 112M  | 00418ET3YAL112MFF-W2 | \$749      | T1           | 93                            | 1.25           | 7.28           | 89.5       | 15.472             | 460//380-415         | 2;7   |
|      |      | 1200//1000 | 132M  | 00412ET3YAL132MFF-W2 | \$1,333    | T1           | 147                           | 1.25           | 7.90           | 89.5       | 19.291             | 460//380-415         | 2;7   |
| 7.5  | 5.5  | 3600//3000 | 132S  | 00536ET3YAL132SFF-W2 | \$1,223    | T1           | 135                           | 1.25           | 8.97           | 89.5       | 19.291             | 460//380-415         | 39    |
|      |      | 1800//1500 | 132S  | 00518ET3YAL132SFF-W2 | \$1,011    | T1           | 142                           | 1.25           | 9.07           | 91.7       | 19.291             | 460//380-415         | 2;7   |
| 10   | 7.5  | 3600//3000 | 132S  | 00736ET3YAL132SFF-W2 | \$1,371    | T1           | 147                           | 1.25           | 12.3           | 90.2       | 19.291             | 460//380-415         | 2;7   |
|      |      | 1800//1500 | 132M  | 00718ET3YAL132MFF-W2 | \$1,189    | T1           | 159                           | 1.25           | 12.2           | 91.7       | 19.291             | 460//380-415         | 2;7   |
| 15   | 11   | 3600//3000 | 160M  | 01136ET3Y160MFF-W22  | \$2,219    | T1           | 304                           | 1.25           | 17.9           | 91.7       | 23.543             | 460//380-415         | 7     |
|      |      | 1800//1500 | 160M  | 01118ET3Y160MFF-W22  | \$1,843    | T1           | 304                           | 1.25           | 18.2           | 92.4       | 23.543             | 460//380-415         | 7     |
| 20   | 15   | 1800//1500 | 160L  | 01518ET3Y160LFF-W22  | \$2,235    | T1           | 358                           | 1.25           | 25.0           | 93.0       | 25.276             | 460//380-415         | 7     |

Please refer to back cover for description of "NOTES"

For detailed specifications, data sheets, drawings and performance curves visit [http:// www.weg.net](http://www.weg.net)

Data subject to change without notice.

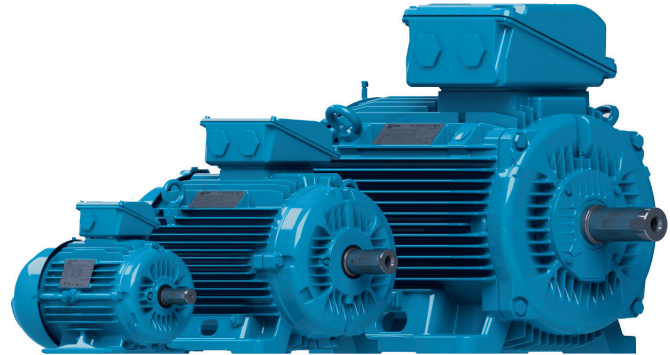
Can't find what you are looking for? Call 1-800-ASK-4WEG (275-4934)

# ATEX Motors

## INCREASED SAFETY

### TEFC - Ex ec

Ex ec motors do not require certification by any third party entity (a manufacturer's compliance declaration is sufficient). Nevertheless the Ex ec motors manufactured by WEG are certified by Ex NB BASEEFA.



### Standard Features:

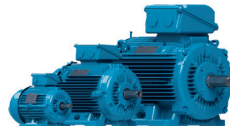
- 50 Hz and 60 Hz rated (1.00 Service Factor)
- Class F insulation (Impregnation Resin and magnet Wire are class H)
- F3 mounted as standard
- Stainless Steel Nameplate - Laser etched with high contrast background
- Regreasable ball bearings (Frames 160 and up)
- Gasketed conduit box
- Zone 2 & 22, Groups IIA, IIB and IIC
- Temperature Class T3
- Suitable for WYE/Delta Start
- Design N
- Conductive plastic fan (frames 63 up to 315)
- Aluminum fan (frame 355)
- Thermistor 2 per phase

### ADDITIONAL TECHNICAL DATA

CONTACT WEG OR VISIT [WWW.WEG.NET](http://WWW.WEG.NET)







### TEFC – Ex ec

| HP         | KW   | RPM                  | Frame | Catalog Number       | List Price | Mult. Symbol | Approx. Shipping Weight (lbs) | Service Factor | FL Amps @ High | FL Eff (%)               | "C" Dimension (in) | Voltage (V)              | Notes  |
|------------|------|----------------------|-------|----------------------|------------|--------------|-------------------------------|----------------|----------------|--------------------------|--------------------|--------------------------|--------|
| 0.25       | 0.18 | 3000//3600           | 63    | E0.1836EP3WAX63F3-W2 | \$364      | XN           | 22                            | 1.00           | 0.51           | 63.6                     | 8.504              | 220-240/380-415//440-460 | 1;8;27 |
|            |      | 1500//1800           | 63    | E0.1818EP3WAX63F3-W2 | \$365      | XN           | 20                            | 1.00           | 0.57           | 64.7                     | 8.504              | 220-240/380-415//440-460 | 1;8;27 |
|            |      | 1000//1200           | 71    | E0.1812EP3WAX71F3-W2 | \$476      | XN           | 29                            | 1.00           | 0.74           | 58.6                     | 9.843              | 220-240/380-415//440-460 | 1;8;27 |
| 0.33       | 0.25 | 3000//3600           | 63    | E0.2536EP3WAX63F3-W2 | \$373      | XN           | 23                            | 1.00           | 0.71           | 64.8                     | 8.504              | 220-240/380-415//440-460 | 1;8;27 |
|            |      | 1500//1800           | 71    | E0.2518EP3WAX71F3-W2 | \$415      | XN           | 27                            | 1.00           | 0.74           | 68.5                     | 9.843              | 220-240/380-415//440-460 | 1;8;27 |
|            |      | 1000//1200           | 71    | E0.2512EP3WAX71F3-W2 | \$483      | XN           | 32                            | 1.00           | 1.05           | 61.6                     | 9.843              | 220-240/380-415//440-460 | 1;8;27 |
| 0.5        | 0.37 | 3000//3600           | 71    | E0.3736EP3WAX71F3-W2 | \$408      | XN           | 24                            | 1.00           | 0.88           | 71.2                     | 9.843              | 220-240/380-415//440-460 | 1;8;27 |
|            |      | 1500//1800           | 71    | E0.3718EP3WAX71F3-W2 | \$427      | XN           | 28                            | 1.00           | 1.03           | 72.7                     | 9.843              | 220-240/380-415//440-460 | 1;8;27 |
|            |      | 1000//1200           | 80    | E0.3712EP3WAX80F3-W2 | \$507      | XN           | 33                            | 1.00           | 1.10           | 67.6                     | 10.906             | 220-240/380-415//440-460 | 1;8;27 |
| 0.75       | 0.55 | 3000//3600           | 71    | E0.5536EP3WAX71F3-W2 | \$415      | XN           | 29                            | 1.00           | 1.20           | 74.1                     | 9.843              | 220-240/380-415//440-460 | 1;8;27 |
|            |      | 1500//1800           | 80    | E0.5518EP3WAX80F3-W2 | \$488      | XN           | 38                            | 1.00           | 1.36           | 77.1                     | 10.906             | 220-240/380-415//440-460 | 1;8;27 |
|            |      | 1000//1200           | 80    | E0.5512EP3WAX80F3-W2 | \$523      | XN           | 36                            | 1.00           | 1.45           | 73.1                     | 10.906             | 220-240/380-415//440-460 | 1;8;27 |
| 1          | 0.75 | 3000//3600           | 80    | E0.7536EP3WAX80F3-W2 | \$499      | XN           | 37                            | 1.00           | 1.56           | 79.5                     | 10.906             | 220-240/380-415//440-460 | 1;8;27 |
|            |      | 3000//3600           | 80    | E0.7536ET3WAX80F3-W2 | \$659      | XN           | 27                            | 1.00           | 1.63           | 81.1                     | 10.906             | 220-240/380-415//440-460 | 1;8;27 |
|            |      | 1500//1800           | 80    | E0.7518EP3WAX80F3-W2 | \$507      | XN           | 39                            | 1.00           | 1.61           | 80.1                     | 10.906             | 220-240/380-415//440-460 | 1;8;27 |
|            |      | 1500//1800           | 80    | E0.7518ET3WAX80F3-W2 | \$670      | XN           | 39                            | 1.00           | 1.60           | 82.8                     | 10.906             | 220-240/380-415//440-460 | 1;8;27 |
|            |      | 1000//1200           | 90S   | E0.7512EP3WAX90SF3-W | \$660      | XN           | 48                            | 1.00           | 1.92           | 76.4                     | 11.969             | 220-240/380-415//440-460 | 1;8;27 |
|            |      | 1000//1200           | L90S  | E0.7512ET3WAXL90SF3W | \$872      | XN           | 51                            | 1.00           | 1.91           | 79.1                     | 13.169             | 220-240/380-415//440-460 | 1;8;27 |
| 1.5        | 1.1  | 3000//3600           | 80    | E00136EP3WAX80F3-W22 | \$538      | XN           | 41                            | 1.00           | 2.33           | 80.2                     | 10.906             | 220-240/380-415//440-460 | 1;8;27 |
|            |      | 3000//3600           | 80    | E00136ET3WAX80F3-W22 | \$711      | XN           | 35                            | 1.00           | 2.32           | 83.4                     | 10.906             | 220-240/380-415//440-460 | 1;8;27 |
|            |      | 1500//1800           | 90S   | E00118EP3WAX90SF3-W2 | \$578      | XN           | 53                            | 1.00           | 2.36           | 82.1                     | 11.969             | 220-240/380-415//440-460 | 1;8;27 |
|            |      | 1500//1800           | 90S   | E00118ET3WAX90SF3-W2 | \$763      | XN           | 51                            | 1.00           | 2.34           | 84.8                     | 11.969             | 220-240/380-415//440-460 | 1;8;27 |
|            |      | 1000//1200           | 90L   | E00112EP3WAX90LF3-W2 | \$700      | XN           | 58                            | 1.00           | 2.80           | 78.1                     | 12.953             | 220-240/380-415//440-460 | 1;8;27 |
| 1000//1200 | 100L | E00112ET3WAX100LF3-W | \$924 | XN                   | 126        | 1.00         | 2.68                          | 81.5           | 14.803         | 220-240/380-415//440-460 | 1;8;27             |                          |        |
| 2          | 1.5  | 3000//3600           | 90S   | E00156EP3WAX90SF3-W2 | \$614      | XN           | 45                            | 1.00           | 3.08           | 82.5                     | 11.969             | 220-240/380-415//440-460 | 1;8;27 |
|            |      | 3000//3600           | 90S   | E00156ET3WAX90SF3-W2 | \$811      | XN           | 50                            | 1.00           | 3.06           | 85.2                     | 11.969             | 220-240/380-415//440-460 | 1;8;27 |
|            |      | 1500//1800           | 90L   | E00158EP3WAX90LF3-W2 | \$673      | XN           | 56                            | 1.00           | 3.22           | 83.1                     | 12.953             | 220-240/380-415//440-460 | 1;8;27 |
|            |      | 1500//1800           | 90L   | E00158ET3WAX90LF3-W2 | \$889      | XN           | 59                            | 1.00           | 3.15           | 86.1                     | 12.953             | 220-240/380-415//440-460 | 1;8;27 |
|            |      | 1000//1200           | 100L  | E00152EP3WAX100LF3-W | \$872      | XN           | 73                            | 1.00           | 3.71           | 80.3                     | 14.803             | 220-240/380-415//440-460 | 1;8;27 |
|            |      | 1000//1200           | 100L  | E00152ET3WAX100LF3-W | \$1,152    | XN           | 98                            | 1.00           | 3.71           | 82.8                     | 14.803             | 220-240/380-415//440-460 | 1;8;27 |
| 3          | 2.2  | 3000//3600           | 90L   | E00236EP3WAX90LF3-W2 | \$700      | XN           | 63                            | 1.00           | 4.56           | 83.9                     | 12.953             | 220-240/380-415//440-460 | 1;8;27 |
|            |      | 3000//3600           | 90L   | E00236ET3WAX90LF3-W2 | \$924      | XN           | 56                            | 1.00           | 4.37           | 86.5                     | 12.953             | 220-240/380-415//440-460 | 1;8;27 |
|            |      | 1500//1800           | 100L  | E00218EP3WAX100LF3-W | \$845      | XN           | 85                            | 1.00           | 4.56           | 84.9                     | 14.803             | 220-240/380-415//440-460 | 1;8;27 |
|            |      | 1500//1800           | 100L  | E00218ET3WAX100LF3-W | \$1,116    | XN           | 77                            | 1.00           | 4.50           | 87.2                     | 14.803             | 220-240/380-415//440-460 | 1;8;27 |
|            |      | 1000//1200           | 112M  | E00212EP3YAX112MF3-W | \$1,181    | XN           | 87                            | 1.00           | 5.34           | 83.0                     | 15.512             | 380-415/660-690//440-460 | 1;8;27 |
|            |      | 1000//1200           | 112M  | E00212ET3YAX112MF3-W | \$1,561    | XN           | 110                           | 1.00           | 5.16           | 84.7                     | 15.512             | 380-415/660-690//440-460 | 1;8;27 |
| 4          | 3    | 3000//3600           | 100L  | E00336EP3WAX100LF3-W | \$916      | XN           | 89                            | 1.00           | 5.85           | 85.0                     | 14.803             | 220-240/380-415//440-460 | 1;8;27 |
|            |      | 3000//3600           | 100L  | E00336ET3WAX100LF3-W | \$1,210    | XN           | 80                            | 1.00           | 5.68           | 87.4                     | 14.803             | 220-240/380-415//440-460 | 1;8;27 |
|            |      | 1500//1800           | 100L  | E00318EP3WAX100LF3-W | \$1,016    | XN           | 86                            | 1.00           | 6.07           | 86.0                     | 14.803             | 220-240/380-415//440-460 | 1;8;27 |
|            |      | 1500//1800           | L100L | E00318ET3WAXL100LF3W | \$1,342    | XN           | 86                            | 1.00           | 6.07           | 88.1                     | 16.457             | 220-240/380-415//440-460 | 1;8;27 |
|            |      | 1000//1200           | 132S  | E00312EP3YAX132SF3-W | \$1,684    | XN           | 140                           | 1.00           | 7.34           | 83.6                     | 17.795             | 380-415/660-690//440-460 | 1;8;27 |
|            |      | 1000//1200           | 132S  | E00312ET3YAX132SF3-W | \$2,225    | XN           | 147                           | 1.00           | 6.84           | 86.0                     | 17.795             | 380-415/660-690//440-460 | 1;8;27 |
| 5.5        | 4    | 3000//3600           | 112M  | E00436EP3YAX112MF3-W | \$1,174    | XN           | 87                            | 1.00           | 7.50           | 86.3                     | 15.512             | 380-415/660-690//440-460 | 1;8;27 |
|            |      | 3000//3600           | 112M  | E00436ET3YAX112MF3-W | \$1,552    | XN           | 94                            | 1.00           | 7.49           | 88.4                     | 15.512             | 380-415/660-690//440-460 | 1;8;27 |
|            |      | 1500//1800           | 112M  | E00418EP3YAX112MF3-W | \$1,388    | XN           | 96                            | 1.00           | 8.20           | 87.0                     | 15.512             | 380-415/660-690//440-460 | 1;8;27 |
|            |      | 1500//1800           | 112M  | E00418ET3YAX112MF3-W | \$1,712    | XN           | 100                           | 1.00           | 8.09           | 89.3                     | 15.512             | 380-415/660-690//440-460 | 1;8;27 |
|            |      | 1000//1200           | 132M  | E00412EP3YAX132MF3-W | \$1,910    | XN           | 155                           | 1.00           | 9.50           | 84.9                     | 19.252             | 380-415/660-690//440-460 | 1;8;27 |
|            |      | 1000//1200           | 132M  | E00412ET3YAX132MF3-W | \$2,524    | XN           | 158                           | 1.00           | 9.03           | 86.8                     | 19.252             | 380-415/660-690//440-460 | 1;8;27 |

continued on next page

Please refer to back cover for description of "NOTES"

For detailed specifications, data sheets, drawings and performance curves visit <http://www.weg.net>

Data subject to change without notice.

Can't find what you are looking for? Call 1-800-ASK-4WEG (275-4934)

A-243

## INCREASED SAFETY

### TEFC – Ex ec - continued

| HP  | kW   | RPM        | Frame  | Catalog Number       | List Price | Mult. Symbol | Approx. Shipping Weight (lbs) | Service Factor | FL Amps @ High | FL Eff (%) | "C" Dimension (in) | Voltage (V)              | Notes  |
|-----|------|------------|--------|----------------------|------------|--------------|-------------------------------|----------------|----------------|------------|--------------------|--------------------------|--------|
| 7.5 | 5.5  | 3000//3600 | 132S   | E00536EP3YAX132SF3-W | \$1,613    | XN           | 137                           | 1.00           | 10.5           | 88.0       | 17.795             | 380-415/660-690//440-460 | 1;8;27 |
|     |      | 3000//3600 | 132S   | E00536ET3YAX132SF3-W | \$2,132    | XN           | 145                           | 1.00           | 10.6           | 89.2       | 17.795             | 380-415/660-690//440-460 | 1;8;27 |
|     |      | 1500//1800 | 132S   | E00518EP3YAX132SF3-W | \$1,798    | XN           | 162                           | 1.00           | 10.4           | 87.7       | 17.795             | 380-415/660-690//440-460 | 1;8;27 |
|     |      | 1500//1800 | 132S   | E00518ET3YAX132SF3-W | \$2,218    | XN           | 150                           | 1.00           | 10.1           | 89.8       | 17.795             | 380-415/660-690//440-460 | 1;8;27 |
|     |      | 1000//1200 | 132M   | E00512EP3YAX132MF3-W | \$2,312    | XN           | 164                           | 1.00           | 12.9           | 86.2       | 19.252             | 380-415/660-690//440-460 | 1;8;27 |
|     |      | 1000//1200 | 132M/L | E00512ET3YAX132MLF3W | \$3,052    | XN           | 207                           | 1.00           | 12.6           | 88.0       | 20.276             | 380-415/660-690//440-460 | 1;8;27 |
| 10  | 7.5  | 3000//3600 | 132S   | E00736EP3YAX132SF3-W | \$1,833    | XN           | 144                           | 1.00           | 13.8           | 88.7       | 17.795             | 380-415/660-690//440-460 | 1;8;27 |
|     |      | 3000//3600 | 132S   | E00736ET3YAX132SF3-W | \$2,422    | XN           | 158                           | 1.00           | 13.9           | 90.3       | 17.795             | 380-415/660-690//440-460 | 1;8;27 |
|     |      | 1500//1800 | 132M   | E00718EP3YAX132MF3-W | \$2,135    | XN           | 164                           | 1.00           | 13.9           | 89.4       | 19.252             | 380-415/660-690//440-460 | 1;8;27 |
|     |      | 1500//1800 | 132M   | E00718ET3YAX132MF3-W | \$2,634    | XN           | 167                           | 1.00           | 13.9           | 90.4       | 19.252             | 380-415/660-690//440-460 | 1;8;27 |
|     |      | 1000//1200 | 160M   | E00712EP3YAX160MF3-W | \$3,221    | XN           | 286                           | 1.00           | 14.7           | 88.5       | 23.543             | 380-415/660-690//440-460 | 1;8;27 |
|     |      | 1000//1200 | 160M   | E00712ET3YAX160MF3-W | \$4,256    | XN           | 298                           | 1.00           | 14.6           | 89.1       | 23.543             | 380-415/660-690//440-460 | 1;8;27 |
| 15  | 11   | 3000//3600 | 160M   | E01136EP3YAX160MF3-W | \$3,150    | XN           | 266                           | 1.00           | 20.1           | 90.6       | 23.543             | 380-415/660-690//440-460 | 1;8;27 |
|     |      | 3000//3600 | 160M   | E01136ET3YAX160MF3-W | \$4,163    | XN           | 291                           | 1.00           | 19.7           | 91.4       | 23.543             | 380-415/660-690//440-460 | 1;8;27 |
|     |      | 1500//1800 | 160M   | E01118EP3YAX160MF3-W | \$3,331    | XN           | 269                           | 1.00           | 20.9           | 90.3       | 23.543             | 380-415/660-690//440-460 | 1;8;27 |
|     |      | 1500//1800 | 160M   | E01118ET3YAX160MF3-W | \$4,108    | XN           | 287                           | 1.00           | 20.6           | 91.5       | 23.543             | 380-415/660-690//440-460 | 1;8;27 |
|     |      | 1000//1200 | 160L   | E01112EP3YAX160LF3-W | \$4,243    | XN           | 337                           | 1.00           | 21.7           | 89.3       | 25.276             | 380-415/660-690//440-460 | 1;8;27 |
|     |      | 1000//1200 | 160L   | E01112ET3YAX160LF3-W | \$5,607    | XN           | 347                           | 1.00           | 21.7           | 90.3       | 25.276             | 380-415/660-690//440-460 | 1;8;27 |
| 20  | 15   | 3000//3600 | 160M   | E01536EP3YAX160MF3-W | \$3,398    | XN           | 284                           | 1.00           | 27.2           | 91.4       | 23.543             | 380-415/660-690//440-460 | 1;8;27 |
|     |      | 3000//3600 | 160M   | E01536ET3YAX160MF3-W | \$4,490    | XN           | 302                           | 1.00           | 27.7           | 91.9       | 23.543             | 380-415/660-690//440-460 | 1;8;27 |
|     |      | 1500//1800 | 160L   | E01518EP3YAX160LF3-W | \$3,622    | XN           | 313                           | 1.00           | 28.2           | 91.2       | 25.276             | 380-415/660-690//440-460 | 1;8;27 |
|     |      | 1500//1800 | 160L   | E01518ET3YAX160LF3-W | \$4,696    | XN           | 335                           | 1.00           | 28.0           | 92.1       | 25.276             | 380-415/660-690//440-460 | 1;8;27 |
|     |      | 1000//1200 | 180L   | E01512EP3YAX180LF3-W | \$5,388    | XN           | 411                           | 1.00           | 27.1           | 90.6       | 27.638             | 380-415/660-690//440-460 | 1;8;27 |
|     |      | 1000//1200 | 180L   | E01512ET3YAX180LF3-W | \$7,119    | XN           | 435                           | 1.00           | 27.3           | 91.2       | 27.638             | 380-415/660-690//440-460 | 1;8;27 |
| 25  | 18.5 | 3000//3600 | 160L   | E01836EP3YAX160LF3-W | \$3,960    | XN           | 356                           | 1.00           | 33.2           | 92.2       | 25.276             | 380-415/660-690//440-460 | 1;8;27 |
|     |      | 3000//3600 | 160L   | E01836ET3YAX160LF3-W | \$5,233    | XN           | 335                           | 1.00           | 33.6           | 92.4       | 25.276             | 380-415/660-690//440-460 | 1;8;27 |
|     |      | 1500//1800 | 180M   | E01818EP3YAX180MF3-W | \$5,439    | XN           | 389                           | 1.00           | 34.7           | 91.7       | 26.142             | 380-415/660-690//440-460 | 1;8;27 |
|     |      | 1500//1800 | 180M   | E01818ET3YAX180MF3-W | \$6,708    | XN           | 397                           | 1.00           | 34.7           | 92.6       | 26.142             | 380-415/660-690//440-460 | 1;8;27 |
|     |      | 1000//1200 | 200L   | E01812EP3YAX200LF3-W | \$7,499    | XN           | 502                           | 1.00           | 35.2           | 91.3       | 30.197             | 380-415/660-690//440-460 | 1;8;27 |
|     |      | 1000//1200 | 200L   | E01812ET3YAX200LF3-W | \$9,910    | XN           | 504                           | 1.00           | 36.0           | 91.7       | 30.197             | 380-415/660-690//440-460 | 1;8;27 |
| 30  | 22   | 3000//3600 | 180M   | E02236EP3YAX180MF3-W | \$5,140    | XN           | 389                           | 1.00           | 38.1           | 92.4       | 26.142             | 380-415/660-690//440-460 | 1;8;27 |
|     |      | 3000//3600 | 180M   | E02236ET3YAX180MF3-W | \$6,792    | XN           | 402                           | 1.00           | 39.3           | 92.7       | 26.142             | 380-415/660-690//440-460 | 1;8;27 |
|     |      | 1500//1800 | 180L   | E02218EP3YAX180LF3-W | \$5,934    | XN           | 446                           | 1.00           | 39.9           | 92.4       | 27.638             | 380-415/660-690//440-460 | 1;8;27 |
|     |      | 1500//1800 | 180L   | E02218ET3YAX180LF3-W | \$7,319    | XN           | 435                           | 1.00           | 40.6           | 93.0       | 27.638             | 380-415/660-690//440-460 | 1;8;27 |
|     |      | 1000//1200 | 200L   | E02212EP3YAX200LF3-W | \$7,956    | XN           | 526                           | 1.00           | 41.8           | 91.6       | 30.197             | 380-415/660-690//440-460 | 1;8;27 |
|     |      | 1000//1200 | 200L   | E02212ET3YAX200LF3-W | \$10,539   | XN           | 526                           | 1.00           | 42.0           | 92.2       | 30.197             | 380-415/660-690//440-460 | 1;8;27 |
| 40  | 30   | 3000//3600 | 200L   | E03036EP3YAX200LF3-W | \$7,515    | XN           | 539                           | 1.00           | 52.2           | 93.0       | 30.197             | 380-415/660-690//440-460 | 1;8;27 |
|     |      | 3000//3600 | 200L   | E03036ET3YAX200LF3-W | \$9,931    | XN           | 548                           | 1.00           | 54.6           | 93.3       | 30.197             | 380-415/660-690//440-460 | 1;8;27 |
|     |      | 1500//1800 | 200L   | E03018EP3YAX200LF3-W | \$7,716    | XN           | 520                           | 1.00           | 56.9           | 92.9       | 30.197             | 380-415/660-690//440-460 | 1;8;27 |
|     |      | 1500//1800 | 200L   | E03018ET3YAX200LF3-W | \$10,004   | XN           | 533                           | 1.00           | 56.4           | 93.6       | 30.197             | 380-415/660-690//440-460 | 1;8;27 |
|     |      | 1000//1200 | 225S/M | E03012EP3YAX225SMF3W | \$12,034   | XN           | 906                           | 1.00           | 54.9           | 92.7       | 34.882             | 380-415/660-690//440-460 | 1;8;27 |
|     |      | 1000//1200 | 225S/M | E03012ET3YAX225SMF3W | \$15,902   | XN           | 952                           | 1.00           | 54.7           | 93.0       | 34.882             | 380-415/660-690//440-460 | 1;8;27 |
| 50  | 37   | 3000//3600 | 200L   | E03736EP3YAX200LF3-W | \$7,987    | XN           | 592                           | 1.00           | 64.0           | 93.5       | 30.197             | 380-415/660-690//440-460 | 1;8;27 |
|     |      | 3000//3600 | 200L   | E03736ET3YAX200LF3-W | \$10,554   | XN           | 581                           | 1.00           | 67.0           | 93.7       | 30.197             | 380-415/660-690//440-460 | 1;8;27 |
|     |      | 1500//1800 | 225S/M | E03718EP3YAX225SMF3W | \$10,284   | XN           | 868                           | 1.00           | 64.9           | 93.3       | 34.882             | 380-415/660-690//440-460 | 1;8;27 |
|     |      | 1500//1800 | 225S/M | E03718ET3YAX225SMF3W | \$13,553   | XN           | 920                           | 1.00           | 66.0           | 93.9       | 34.882             | 380-415/660-690//440-460 | 1;8;27 |
|     |      | 1000//1200 | 250S/M | E03712EP3YAX250SMF3W | \$13,422   | XN           | 1086                          | 1.00           | 65.0           | 93.2       | 37.992             | 380-415/660-690//440-460 | 1;8;27 |
|     |      | 1000//1200 | 250S/M | E03712ET3YAX250SMF3W | \$17,736   | XN           | 1068                          | 1.00           | 65.5           | 93.5       | 37.992             | 380-415/660-690//440-460 | 1;8;27 |

continued on next page

Please refer to back cover for description of "NOTES"

For detailed specifications, data sheets, drawings and performance curves visit <http://www.weg.net>

**TEFC – Ex ec - continued**

| HP  | KW  | RPM        | Frame  | Catalog Number       | List Price | Mult. Symbol | Approx. Shipping Weight (lbs) | Service Factor | FL Amps @ High | FL Eff (%) | "C" Dimension (in) | Voltage (V)              | Notes  |
|-----|-----|------------|--------|----------------------|------------|--------------|-------------------------------|----------------|----------------|------------|--------------------|--------------------------|--------|
| 60  | 45  | 3000//3600 | 225S/M | E04536EP3YAX225SMF3W | \$12,588   | XN           | 899                           | 1.00           | 75.8           | 93.8       | 33.701             | 380-415/660-690//440-460 | 1;8;27 |
|     |     | 3000//3600 | 225S/M | E04536ET3YAX225SMF3W | \$16,634   | XN           | 1011                          | 1.00           | 75.4           | 94.3       | 33.701             | 380-415/660-690//440-460 | 1;8;27 |
|     |     | 1500//1800 | 225S/M | E04518EP3YAX225SMF3W | \$11,696   | XN           | 914                           | 1.00           | 81.5           | 93.7       | 34.882             | 380-415/660-690//440-460 | 1;8;27 |
|     |     | 1500//1800 | 225S/M | E04518ET3YAX225SMF3W | \$15,411   | XN           | 996                           | 1.00           | 79.0           | 94.4       | 34.882             | 380-415/660-690//440-460 | 1;8;27 |
|     |     | 1000//1200 | 280S/M | E04512EP3YAX280SMF3W | \$20,481   | XN           | 1478                          | 1.00           | 83.7           | 93.5       | 42.165             | 380-415/660-690//440-460 | 1;8;27 |
|     |     | 1000//1200 | 280S/M | E04512ET3YAX280SMF3W | \$27,064   | XN           | 1589                          | 1.00           | 82.2           | 94.0       | 42.165             | 380-415/660-690//440-460 | 1;8;27 |
| 75  | 55  | 3000//3600 | 250S/M | E05536EP3YAX250SMF3W | \$14,893   | XN           | 1031                          | 1.00           | 92.5           | 94.0       | 37.992             | 380-415/660-690//440-460 | 1;8;27 |
|     |     | 3000//3600 | 250S/M | E05536ET3YAX250SMF3W | \$19,680   | XN           | 1134                          | 1.00           | 93.2           | 94.4       | 37.992             | 380-415/660-690//440-460 | 1;8;27 |
|     |     | 1500//1800 | 250S/M | E05518EP3YAX250SMF3W | \$14,354   | XN           | 1099                          | 1.00           | 94.6           | 94.1       | 37.992             | 380-415/660-690//440-460 | 1;8;27 |
|     |     | 1500//1800 | 250S/M | E05518ET3YAX250SMF3W | \$18,916   | XN           | 1091                          | 1.00           | 97.5           | 94.6       | 37.992             | 380-415/660-690//440-460 | 1;8;27 |
|     |     | 1000//1200 | 280S/M | E05512EP3YAX280SMF3W | \$20,781   | XN           | 1551                          | 1.00           | 99.4           | 93.9       | 42.165             | 380-415/660-690//440-460 | 1;8;27 |
|     |     | 1000//1200 | 280S/M | E05512ET3YAX280SMF3W | \$27,355   | XN           | 1644                          | 1.00           | 100            | 94.3       | 42.165             | 380-415/660-690//440-460 | 1;8;27 |
| 100 | 75  | 3000//3600 | 280S/M | E07536EP3YAX280SMF3W | \$20,430   | XN           | 1553                          | 1.00           | 127            | 94.3       | 42.165             | 380-415/660-690//440-460 | 1;8;27 |
|     |     | 3000//3600 | 280S/M | E07536ET3YAX280SMF3W | \$26,996   | XN           | 1677                          | 1.00           | 126            | 94.9       | 42.165             | 380-415/660-690//440-460 | 1;8;27 |
|     |     | 1500//1800 | 280S/M | E07518EP3YAX280SMF3W | \$20,544   | XN           | 1573                          | 1.00           | 130            | 94.4       | 42.165             | 380-415/660-690//440-460 | 1;8;27 |
|     |     | 1500//1800 | 280S/M | E07518ET3YAX280SMF3W | \$27,072   | XN           | 1567                          | 1.00           | 130            | 95.2       | 42.165             | 380-415/660-690//440-460 | 1;8;27 |
|     |     | 1000//1200 | 315S/M | E07512EP3YAX315SMF3W | \$23,092   | XN           | 2010                          | 1.00           | 137            | 94.2       | 50.157             | 380-415/660-690//440-460 | 1;8;27 |
|     |     | 1000//1200 | 315S/M | E07512ET3YAX315SMF3W | \$30,515   | XN           | 2183                          | 1.00           | 137            | 95.0       | 50.157             | 380-415/660-690//440-460 | 1;8;27 |
| 125 | 90  | 3000//3600 | 280S/M | E09036EP3YAX280SMF3W | \$21,712   | XN           | 1604                          | 1.00           | 152            | 94.5       | 42.165             | 380-415/660-690//440-460 | 1;8;27 |
|     |     | 3000//3600 | 280S/M | E09036ET3YAX280SMF3W | \$28,691   | XN           | 1744                          | 1.00           | 149            | 95.2       | 42.165             | 380-415/660-690//440-460 | 1;8;27 |
|     |     | 1500//1800 | 280S/M | E09018EP3YAX280SMF3W | \$21,307   | XN           | 1648                          | 1.00           | 154            | 94.7       | 42.165             | 380-415/660-690//440-460 | 1;8;27 |
|     |     | 1500//1800 | 280S/M | E09018ET3YAX280SMF3W | \$28,077   | XN           | 1722                          | 1.00           | 154            | 95.4       | 42.165             | 380-415/660-690//440-460 | 1;8;27 |
|     |     | 1000//1200 | 315S/M | E09012EP3YAX315SMF3W | \$27,076   | XN           | 2133                          | 1.00           | 159            | 94.6       | 50.157             | 380-415/660-690//440-460 | 1;8;27 |
|     |     | 1000//1200 | 315S/M | E09012ET3YAX315SMF3W | \$35,779   | XN           | 2337                          | 1.00           | 162            | 95.2       | 50.157             | 380-415/660-690//440-460 | 1;8;27 |
| 150 | 110 | 3000//3600 | 315S/M | E11036EP3YAX315SMF3W | \$26,144   | XN           | 2091                          | 1.00           | 183            | 94.9       | 48.976             | 380-415/660-690//440-460 | 1;8;27 |
|     |     | 3000//3600 | 315S/M | E11036ET3YAX315SMF3W | \$34,547   | XN           | 2139                          | 1.00           | 184            | 95.4       | 48.976             | 380-415/660-690//440-460 | 1;8;27 |
|     |     | 1500//1800 | 315S/M | E11018EP3YAX315SMF3W | \$27,068   | XN           | 2120                          | 1.00           | 192            | 95.0       | 50.157             | 380-415/660-690//440-460 | 1;8;27 |
|     |     | 1500//1800 | 315S/M | E11018ET3YAX315SMF3W | \$35,670   | XN           | 2249                          | 1.00           | 189            | 95.5       | 50.157             | 380-415/660-690//440-460 | 1;8;27 |
|     |     | 1000//1200 | 315S/M | E11012EP3YAX315SMF3W | \$34,367   | XN           | 2294                          | 1.00           | 194            | 94.9       | 50.157             | 380-415/660-690//440-460 | 1;8;27 |
|     |     | 1000//1200 | 315S/M | E11012ET3YAX315SMF3W | \$45,413   | XN           | 2447                          | 1.00           | 196            | 95.1       | 50.157             | 380-415/660-690//440-460 | 1;8;27 |
| 175 | 132 | 3000//3600 | 315S/M | E13236EP3YAX315SMF3W | \$29,862   | XN           | 2217                          | 1.00           | 217            | 95.2       | 48.976             | 380-415/660-690//440-460 | 1;8;27 |
|     |     | 3000//3600 | 315S/M | E13236ET3YAX315SMF3W | \$39,500   | XN           | 2249                          | 1.00           | 218            | 95.6       | 48.976             | 380-415/660-690//440-460 | 1;8;27 |
|     |     | 1500//1800 | 315S/M | E13218EP3YAX315SMF3W | \$31,689   | XN           | 2265                          | 1.00           | 224            | 95.2       | 50.157             | 380-415/660-690//440-460 | 1;8;27 |
|     |     | 1500//1800 | 315S/M | E13218ET3YAX315SMF3W | \$42,877   | XN           | 2381                          | 1.00           | 226            | 95.6       | 50.157             | 380-415/660-690//440-460 | 1;8;27 |
|     |     | 1000//1200 | 315S/M | E13212EP3YAX315SMF3W | \$52,853   | XN           | 2448                          | 1.00           | 233            | 95.0       | 50.157             | 380-415/660-690//440-460 | 1;8;27 |
|     |     | 1000//1200 | 315S/M | E13212ET3YAX315SMF3W | \$76,749   | XN           | 2580                          | 1.00           | 240            | 95.6       | 50.157             | 380-415/660-690//440-460 | 1;8;27 |
| 200 | 150 | 3000//3600 | 315S/M | E15036EP3YAX315SMF3W | \$31,360   | XN           | 2073                          | 1.00           | 253            | 94.8       | 48.976             | 220-240/380-415//440-460 | 1;8;27 |
|     |     | 3000//3600 | 315S/M | E15036ET3YAX315SMF3W | \$41,396   | XN           | 2469                          | 1.00           | 245            | 95.6       | 48.976             | 380-415/660-690//440-460 | 1;8;27 |
|     |     | 1500//1800 | 315S/M | E15018EP3YAX315SMF3W | \$33,286   | XN           | 2073                          | 1.00           | 254            | 95.4       | 50.157             | 220-240/380-415//440-460 | 1;8;27 |
|     |     | 1500//1800 | 315S/M | E15018ET3YAX315SMF3W | \$43,938   | XN           | 2425                          | 1.00           | 259            | 96.0       | 50.157             | 380-415/660-690//440-460 | 1;8;27 |
|     |     | 1000//1200 | 315L   | E15012ET3YAX315LF3W2 | \$82,712   | XN           | 2800                          | 1.00           | 269            | 95.7       | 54.685             | 380-415/660-690//440-460 | 1;8;27 |
|     |     | 1000//1200 | 355M/L | E15012EP3YAX355MLF3W | \$62,660   | XN           | 2073                          | 1.00           | 291            | 95.0       | 58.346             | 220-240/380-415//440-460 | 1;8;27 |

continued on next page

## INCREASED SAFETY

### TEFC – Ex ec - continued

| HP  | kW  | RPM        | Frame  | Catalog Number                       | List Price | Mult. Symbol | Approx. Shipping Weight (lbs) | Service Factor | FL Amps @ High | FL Eff (%) | "C" Dimension (in) | Voltage (V)              | Notes  |
|-----|-----|------------|--------|--------------------------------------|------------|--------------|-------------------------------|----------------|----------------|------------|--------------------|--------------------------|--------|
| 220 | 160 | 3000//3600 | 315S/M | <a href="#">E16036EP3YAX315SMF3W</a> | \$38,870   | XN           | 2778                          | 1.00           | 262            | 95.3       | 48.976             | 380-415/660-690//440-460 | 1;8;27 |
|     |     | 3000//3600 | 315S/M | <a href="#">E16036ET3YAX315SMF3W</a> | \$51,363   | XN           | 2535                          | 1.00           | 264            | 95.8       | 48.976             | 380-415/660-690//440-460 | 1;8;27 |
|     |     | 1500//1800 | 315S/M | <a href="#">E16018EP3YAX315SMF3W</a> | \$36,046   | XN           | 2385                          | 1.00           | 271            | 95.4       | 50.157             | 380-415/660-690//440-460 | 1;8;27 |
|     |     | 1500//1800 | 315S/M | <a href="#">E16018ET3YAX315SMF3W</a> | \$47,534   | XN           | 2535                          | 1.00           | 273            | 95.8       | 50.157             | 380-415/660-690//440-460 | 1;8;27 |
|     |     | 1000//1200 | 315L   | <a href="#">E16012EP3YAX315LF3-W</a> | \$60,176   | XN           | 2862                          | 1.00           | 282            | 95.2       | 54.685             | 380-415/660-690//440-460 | 1;8;27 |
|     |     | 1000//1200 | 315L   | <a href="#">E16012ET3YAX315LF3-W</a> | \$79,990   | XN           | 2866                          | 1.00           | 287            | 95.8       | 54.685             | 380-415/660-690//440-460 | 1;8;27 |
|     |     | 1000//1200 | 355M/L | <a href="#">E16012EP3YAX355MLF3W</a> | \$65,792   | XN           | 3488                          | 1.00           | 290            | 96.0       | 58.346             | 380-415/660-690//440-460 | 1;8;27 |
|     |     | 1000//1200 | 355M/L | <a href="#">E16012ET3YAX355MLF3W</a> | \$86,940   | XN           | 3592                          | 1.00           | 302            | 95.8       | 58.346             | 380-415/660-690//440-460 | 1;8;27 |
| 270 | 200 | 3000//3600 | 355M/L | <a href="#">E20036EP3YAX355MLF3W</a> | \$66,531   | XN           | 3922                          | 1.00           | 320            | 95.6       | 55.591             | 380-415/660-690//440-460 | 1;8;27 |
|     |     | 1500//1800 | 315L   | <a href="#">E20018ET3YAX315LF3-W</a> | \$70,770   | XN           | 2800                          | 1.00           | 333            | 96.1       | 54.685             | 380-415/660-690//440-460 | 1;8;27 |
|     |     | 1500//1800 | 355M/L | <a href="#">E20018EP3YAX355MLF3W</a> | \$64,081   | XN           | 3380                          | 1.00           | 346            | 95.6       | 58.346             | 380-415/660-690//440-460 | 1;8;27 |
|     |     | 1500//1800 | 355M/L | <a href="#">E20018ET3YAX355MLF3W</a> | \$76,925   | XN           | 3580                          | 1.00           | 344            | 96.3       | 58.346             | 380-415/660-690//440-460 | 1;8;27 |
|     |     | 1000//1200 | 315L   | <a href="#">E20012EP3YAX315LF3-W</a> | \$66,948   | XN           | 3435                          | 1.00           | 356            | 95.4       | 54.685             | 380-415/660-690//440-460 | 1;8;27 |
|     |     | 1000//1200 | 355M/L | <a href="#">E20012EP3YAX355MLF3W</a> | \$74,007   | XN           | 3907                          | 1.00           | 368            | 95.7       | 58.346             | 380-415/660-690//440-460 | 1;8;27 |
|     |     | 1000//1200 | 355M/L | <a href="#">E20012ET3YAX355MLF3W</a> | \$97,795   | XN           | 3857                          | 1.00           | 367            | 95.9       | 58.346             | 380-415/660-690//440-460 | 1;8;27 |
| 340 | 250 | 3000//3600 | 315L   | <a href="#">E25036EP3YAX315LF3-W</a> | \$73,948   | XN           | 3351                          | 1.00           | 400            | 95.6       | 53.268             | 380-415/660-690//440-460 | 1;8;27 |
|     |     | 3000//3600 | 355M/L | <a href="#">E25036EP3YAX355MLF3W</a> | \$82,191   | XN           | 4275                          | 1.00           | 392            | 96.4       | 55.591             | 380-415/660-690//440-460 | 1;8;27 |
|     |     | 1500//1800 | 315L   | <a href="#">E25018EP3YAX315LF3-W</a> | \$62,457   | XN           | 3239                          | 1.00           | 417            | 95.9       | 54.685             | 380-415/660-690//440-460 | 1;8;27 |
|     |     | 1500//1800 | 315L   | <a href="#">E25018ET3YAX315LF3-W</a> | \$76,550   | XN           | 3307                          | 1.00           | 424            | 96.4       | 54.685             | 380-415/660-690//440-460 | 1;8;27 |
|     |     | 1500//1800 | 355M/L | <a href="#">E25018EP3YAX355MLF3W</a> | \$67,456   | XN           | 3525                          | 1.00           | 432            | 95.8       | 58.346             | 380-415/660-690//440-460 | 1;8;27 |
|     |     | 1500//1800 | 355M/L | <a href="#">E25018ET3YAX355MLF3W</a> | \$83,195   | XN           | 3702                          | 1.00           | 424            | 96.4       | 58.346             | 380-415/660-690//440-460 | 1;8;27 |
|     |     | 1000//1200 | 355M/L | <a href="#">E25012EP3YAX355MLF3W</a> | \$88,256   | XN           | 4229                          | 1.00           | 461            | 95.5       | 58.346             | 380-415/660-690//440-460 | 1;8;27 |
|     |     | 1000//1200 | 355M/L | <a href="#">E25012ET3YAX355MLF3W</a> | \$111,338  | XN           | 4320                          | 1.00           | 464            | 96.0       | 58.346             | 380-415/660-690//440-460 | 1;8;27 |

# ATEX Motors

## EXPLOSION PROOF

### TEFC - Ex db

- 50 Hz and 60 Hz rated (1.00 Service Factor)
- Class F insulation (impregnation resin and magnet wire are class H)
- F3 mounted as standard
- Stainless Steel Nameplate - Laser etched with high contrast background
- Regreasable ball bearings (Frames 225 and up)
- Gasketed conduit box
- Zone 1 and 2, Groups IIA and IIB, class of temperature T4
- Suitable for WYE/Delta Start
- Design N
- Conductive plastic fan (frames 63 up to 315)
- Aluminum fan (frame 355)
- Lip Seal on both endshields
- Thermistors 1 per phase



#### ADDITIONAL TECHNICAL DATA

CONTACT WEG OR VISIT [WWW.WEG.NET](http://WWW.WEG.NET)





| HP  | kW   | RPM       | Frame  | Catalog Number       | List Price | Mult. Symbol | Approx. Shipping Weight (lbs) | Service Factor | FL Amps @ High | FL. Eff (%) | “C” Dimension (in) | Voltage (V)              | Notes  |
|-----|------|-----------|--------|----------------------|------------|--------------|-------------------------------|----------------|----------------|-------------|--------------------|--------------------------|--------|
| 1   | 0.75 | 3000/3600 | 90S/L  | E0.7536XP3WAX90SF3-W | \$1,267    | XD           | 68                            | 1.00           | 1.69           | 79.2        | 15.118             | 220-240/380-415//440-460 | 1;8;27 |
|     |      | 1500/1800 | 90S/L  | E0.7518XP3WAX90SF3-W | \$1,283    | XD           | 91                            | 1.00           | 1.66           | 80.4        | 15.118             | 220-240/380-415//440-460 | 1;8;27 |
|     |      | 1000/1200 | 90S/L  | E0.7512XP3WAX90LF3-W | \$1,199    | XD           | 75                            | 1.00           | 1.92           | 76.4        | 15.118             | 220-240/380-415//440-460 | 1;8;27 |
| 1.5 | 1.1  | 3000/3600 | 90S/L  | E00136XP3WAX90SF3-W  | \$1,318    | XD           | 68                            | 1.00           | 2.33           | 81.0        | 15.118             | 220-240/380-415//440-460 | 1;8;27 |
|     |      | 1500/1800 | 90S/L  | E00118XP3WAX90LF3-W  | \$1,334    | XD           | 75                            | 1.00           | 2.45           | 82.1        | 15.118             | 220-240/380-415//440-460 | 1;8;27 |
|     |      | 1000/1200 | 90S/L  | E00112XP3WAX90LF3-W  | \$1,588    | XD           | 75                            | 1.00           | 2.80           | 78.1        | 15.118             | 220-240/380-415//440-460 | 1;8;27 |
| 2   | 1.5  | 3000/3600 | 90S/L  | E00156XP3WAX90SF3-W  | \$1,371    | XD           | 60                            | 1.00           | 3.12           | 82.5        | 15.118             | 220-240/380-415//440-460 | 1;8;27 |
|     |      | 1500/1800 | 100L   | E00158XP3WAX100LF3-W | \$1,488    | XD           | 123                           | 1.00           | 3.16           | 83.7        | 17.244             | 220-240/380-415//440-460 | 1;8;27 |
|     |      | 1000/1200 | 100L   | E00152XP3WAX100LF3-W | \$1,757    | XD           | 101                           | 1.00           | 3.71           | 80.3        | 17.244             | 220-240/380-415//440-460 | 1;8;27 |
| 3   | 2.2  | 3000/3600 | 90S/L  | E00236XP3WAX90LF3-W  | \$1,534    | XD           | 51                            | 1.00           | 4.56           | 83.9        | 15.118             | 220-240/380-415//440-460 | 1;8;27 |
|     |      | 1500/1800 | 100L   | E00218XP3WAX100LF3-W | \$1,783    | XD           | 136                           | 1.00           | 4.56           | 84.9        | 17.244             | 220-240/380-415//440-460 | 1;8;27 |
|     |      | 1000/1200 | 112M   | E00212XP3YAX112MF3-W | \$2,040    | XD           | 126                           | 1.00           | 6.04           | 84.4        | 17.953             | 380-415/660-690//440-460 | 1;8;27 |
| 4   | 3    | 3000/3600 | 100L   | E00336XP3WAX100LF3-W | \$1,918    | XD           | 130                           | 1.00           | 5.85           | 85.0        | 17.244             | 220-240/380-415//440-460 | 1;8;27 |
|     |      | 1500/1800 | 112M   | E00318XP3YAX112MF3-W | \$2,137    | XD           | 145                           | 1.00           | 6.09           | 87.9        | 17.953             | 380-415/660-690//440-460 | 1;8;27 |
|     |      | 1000/1200 | 132S/M | E00312XP3YAX132SF3-W | \$3,224    | XD           | 180                           | 1.00           | 7.34           | 83.6        | 20.630             | 380-415/660-690//440-460 | 1;8;27 |
| 5.5 | 4    | 3000/3600 | 112M   | E00436XP3YAX112MF3-W | \$2,414    | XD           | 164                           | 1.00           | 7.50           | 86.3        | 17.953             | 380-415/660-690//440-460 | 1;8;27 |
|     |      | 1500/1800 | 112M   | E00418XP3YAX112MF3-W | \$2,468    | XD           | 147                           | 1.00           | 8.00           | 87.0        | 17.953             | 380-415/660-690//440-460 | 1;8;27 |
|     |      | 1000/1200 | 132S/M | E00412XP3YAX132MF3-W | \$3,607    | XD           | 202                           | 1.00           | 9.50           | 84.9        | 20.630             | 380-415/660-690//440-460 | 1;8;27 |
| 7.5 | 5.5  | 3000/3600 | 132S/M | E00536XP3YAX132SF3-W | \$3,083    | XD           | 239                           | 1.00           | 10.6           | 87.3        | 20.630             | 380-415/660-690//440-460 | 1;8;27 |
|     |      | 1500/1800 | 132S/M | E00518XP3YAX132SF3-W | \$3,025    | XD           | 247                           | 1.00           | 10.4           | 87.7        | 20.630             | 380-415/660-690//440-460 | 1;8;27 |
|     |      | 1000/1200 | 132S/M | E00512XP3YAX132MF3-W | \$3,800    | XD           | 219                           | 1.00           | 12.9           | 86.2        | 20.630             | 380-415/660-690//440-460 | 1;8;27 |
| 10  | 7.5  | 3000/3600 | 132S/M | E00736XP3YAX132SF3-W | \$3,556    | XD           | 252                           | 1.00           | 13.8           | 88.7        | 20.630             | 380-415/660-690//440-460 | 1;8;27 |
|     |      | 1500/1800 | 132S/M | E00718XP3YAX132MF3-W | \$3,685    | XD           | 224                           | 1.00           | 13.9           | 89.4        | 20.630             | 380-415/660-690//440-460 | 1;8;27 |
|     |      | 1000/1200 | 160M/L | E00712XP3YAX160MF3-W | \$5,017    | XD           | 350                           | 1.00           | 14.7           | 88.5        | 28.228             | 380-415/660-690//440-460 | 1;8;27 |
| 15  | 11   | 3000/3600 | 160M/L | E01136XP3YAX160MF3-W | \$4,148    | XD           | 446                           | 1.00           | 20.1           | 90.6        | 28.228             | 380-415/660-690//440-460 | 1;8;27 |
|     |      | 1500/1800 | 160M/L | E01118XP3YAX160MF3-W | \$4,151    | XD           | 359                           | 1.00           | 20.9           | 90.3        | 28.228             | 380-415/660-690//440-460 | 1;8;27 |
|     |      | 1000/1200 | 160M/L | E01112XP3YAX160LF3-W | \$5,281    | XD           | 392                           | 1.00           | 21.7           | 89.3        | 28.228             | 380-415/660-690//440-460 | 1;8;27 |
| 20  | 15   | 3000/3600 | 160M/L | E01536XP3YAX160MF3-W | \$4,924    | XD           | 461                           | 1.00           | 27.2           | 91.4        | 28.228             | 380-415/660-690//440-460 | 1;8;27 |
|     |      | 1500/1800 | 160M/L | E01518XP3YAX160LF3-W | \$4,608    | XD           | 381                           | 1.00           | 28.2           | 91.2        | 28.228             | 380-415/660-690//440-460 | 1;8;27 |
|     |      | 1000/1200 | 180M/L | E01512XP3YAX180LF3-W | \$6,436    | XD           | 512                           | 1.00           | 27.1           | 90.6        | 29.606             | 380-415/660-690//440-460 | 1;8;27 |
| 25  | 18.5 | 3000/3600 | 160M/L | E01836XP3YAX160LF3-W | \$5,915    | XD           | 409                           | 1.00           | 33.2           | 92.2        | 28.228             | 380-415/660-690//440-460 | 1;8;27 |
|     |      | 1500/1800 | 180M/L | E01818XP3YAX180MF3-W | \$6,059    | XD           | 584                           | 1.00           | 34.7           | 91.7        | 29.606             | 380-415/660-690//440-460 | 1;8;27 |
|     |      | 1000/1200 | 200M/L | E01812XP3YAX200LF3-W | \$8,379    | XD           | 617                           | 1.00           | 35.2           | 91.3        | 32.323             | 380-415/660-690//440-460 | 1;8;27 |
| 30  | 22   | 3000/3600 | 180M/L | E02236XP3YAX180MF3-W | \$7,099    | XD           | 582                           | 1.00           | 38.1           | 92.4        | 29.606             | 380-415/660-690//440-460 | 1;8;27 |
|     |      | 1500/1800 | 180M/L | E02218XP3YAX180LF3-W | \$6,706    | XD           | 478                           | 1.00           | 39.9           | 92.4        | 29.606             | 380-415/660-690//440-460 | 1;8;27 |
|     |      | 1000/1200 | 200M/L | E02212XP3YAX200LF3-W | \$9,487    | XD           | 529                           | 1.00           | 41.8           | 91.6        | 32.323             | 380-415/660-690//440-460 | 1;8;27 |
| 40  | 30   | 3000/3600 | 200M/L | E03036XP3YAX200LF3-W | \$8,824    | XD           | 647                           | 1.00           | 52.2           | 93.0        | 32.323             | 380-415/660-690//440-460 | 1;8;27 |
|     |      | 1500/1800 | 200M/L | E03018XP3YAX200LF3-W | \$8,717    | XD           | 684                           | 1.00           | 56.9           | 92.9        | 32.323             | 380-415/660-690//440-460 | 1;8;27 |
|     |      | 1000/1200 | 225S/M | E03012XP3YAX225SMF3W | \$12,936   | XD           | 937                           | 1.00           | 54.9           | 92.7        | 37.441             | 380-415/660-690//440-460 | 1;8;27 |
| 50  | 37   | 3000/3600 | 200M/L | E03736XP3YAX200LF3-W | \$10,812   | XD           | 573                           | 1.00           | 64.0           | 93.5        | 32.323             | 380-415/660-690//440-460 | 1;8;27 |
|     |      | 1500/1800 | 225S/M | E03718XP3YAX225SMF3W | \$11,099   | XD           | 998                           | 1.00           | 64.9           | 93.3        | 37.441             | 380-415/660-690//440-460 | 1;8;27 |
|     |      | 1000/1200 | 250S/M | E03712XP3YAX250SMF3W | \$15,176   | XD           | 1103                          | 1.00           | 65.0           | 93.2        | 39.724             | 380-415/660-690//440-460 | 1;8;27 |
| 60  | 45   | 3000/3600 | 225S/M | E04536XP3YAX225SMF3W | \$17,255   | XD           | 1075                          | 1.00           | 75.8           | 93.8        | 36.260             | 380-415/660-690//440-460 | 1;8;27 |
|     |      | 1500/1800 | 225S/M | E04518XP3YAX225SMF3W | \$12,846   | XD           | 970                           | 1.00           | 81.5           | 93.7        | 37.441             | 380-415/660-690//440-460 | 1;8;27 |
|     |      | 1000/1200 | 280S/M | E04512XP3YAX280SMF3W | \$21,544   | XD           | 1793                          | 1.00           | 83.7           | 93.5        | 44.705             | 380-415/660-690//440-460 | 1;8;27 |

continued on next page

Please refer to back cover for description of “NOTES”

For detailed specifications, data sheets, drawings and performance curves visit <http://www.weg.net>





**TEFC – Ex db - IE2 - continued**

| HP  | kW  | RPM        | Frame  | Catalog Number       | List Price | Mult. Symbol | Approx. Shipping Weight (lbs) | Service Factor | FL Amps @ High | FL. Eff (%) | "C" Dimension (in) | Voltage (V)              | Notes  |
|-----|-----|------------|--------|----------------------|------------|--------------|-------------------------------|----------------|----------------|-------------|--------------------|--------------------------|--------|
| 75  | 55  | 3000//3600 | 250S/M | E05536XP3YAX250SMF3W | \$21,608   | XD           | 1227                          | 1.00           | 92.5           | 94.0        | 39.724             | 380-415/660-690//440-460 | 1;8;27 |
|     |     | 1500//1800 | 250S/M | E05518XP3YAX250SMF3W | \$19,034   | XD           | 1312                          | 1.00           | 94.6           | 94.1        | 39.724             | 380-415/660-690//440-460 | 1;8;27 |
|     |     | 1000//1200 | 280S/M | E05512XP3YAX280SMF3W | \$27,320   | XD           | 1704                          | 1.00           | 99.4           | 93.9        | 44.705             | 380-415/660-690//440-460 | 1;8;27 |
| 100 | 75  | 3000//3600 | 280S/M | E07536XP3YAX280SMF3W | \$30,248   | XD           | 1854                          | 1.00           | 126            | 94.3        | 44.705             | 380-415/660-690//440-460 | 1;8;27 |
|     |     | 1500//1800 | 280S/M | E07518XP3YAX280SMF3W | \$23,986   | XD           | 1852                          | 1.00           | 130            | 94.4        | 44.705             | 380-415/660-690//440-460 | 1;8;27 |
|     |     | 1000//1200 | 315S/M | E07512XP3YAX315SMF3W | \$31,133   | XD           | 1599                          | 1.00           | 137            | 94.2        | 51.654             | 380-415/660-690//440-460 | 1;8;27 |
| 125 | 90  | 3000//3600 | 280S/M | E09036XP3YAX280SMF3W | \$36,063   | XD           | 1934                          | 1.00           | 151            | 94.5        | 44.705             | 380-415/660-690//440-460 | 1;8;27 |
|     |     | 1500//1800 | 280S/M | E09018XP3YAX280SMF3W | \$33,209   | XD           | 2060                          | 1.00           | 154            | 94.7        | 44.705             | 380-415/660-690//440-460 | 1;8;27 |
|     |     | 1000//1200 | 315S/M | E09012XP3YAX315SMF3W | \$40,124   | XD           | 2271                          | 1.00           | 159            | 94.6        | 51.654             | 380-415/660-690//440-460 | 1;8;27 |
| 150 | 110 | 3000//3600 | 315S/M | E11036XP3YAX315SMF3W | \$42,763   | XD           | 2205                          | 1.00           | 183            | 94.9        | 50.472             | 380-415/660-690//440-460 | 1;8;27 |
|     |     | 1500//1800 | 315S/M | E11018XP3YAX315SMF3W | \$37,846   | XD           | 2426                          | 1.00           | 192            | 95.0        | 51.654             | 380-415/660-690//440-460 | 1;8;27 |
|     |     | 1000//1200 | 315S/M | E11012XP3YAX315SMF3W | \$48,658   | XD           | 2569                          | 1.00           | 194            | 94.9        | 51.654             | 380-415/660-690//440-460 | 1;8;27 |
| 175 | 132 | 3000//3600 | 315S/M | E13236XP3YAX315SMF3W | \$54,064   | XD           | 2337                          | 1.00           | 217            | 95.2        | 50.472             | 380-415/660-690//440-460 | 1;8;27 |
|     |     | 1500//1800 | 315S/M | E13218XP3YAX315SMF3W | \$45,939   | XD           | 2624                          | 1.00           | 224            | 95.2        | 51.654             | 380-415/660-690//440-460 | 1;8;27 |
|     |     | 1000//1200 | 315S/M | E13212XP3YAX315SMF3W | \$82,346   | XD           | 3749                          | 1.00           | 233            | 95.0        | 51.654             | 380-415/660-690//440-460 | 1;8;27 |
| 220 | 160 | 3000//3600 | 315S/M | E16036XP3YAX315SMF3W | \$67,306   | XD           | 2567                          | 1.00           | 262            | 95.3        | 50.472             | 380-415/660-690//440-460 | 1;8;27 |
|     |     | 1500//1800 | 315S/M | E16018XP3YAX315SMF3W | \$50,129   | XD           | 2668                          | 1.00           | 271            | 95.4        | 51.654             | 380-415/660-690//440-460 | 1;8;27 |
|     |     | 1000//1200 | 355M/L | E16012XP3YAX355MLF3W | \$90,159   | XD           | 3969                          | 1.00           | 290            | 96.0        | 61.358             | 380-415/660-690//440-460 | 1;8;27 |
| 270 | 200 | 3000//3600 | 355M/L | E20036XP3YAX355MLF3W | \$100,962  | XD           | 4035                          | 1.00           | 320            | 95.6        | 58.602             | 380-415/660-690//440-460 | 1;8;27 |
|     |     | 1500//1800 | 355M/L | E20018XP3YAX355MLF3W | \$80,905   | XD           | 4006                          | 1.00           | 346            | 95.6        | 61.358             | 380-415/660-690//440-460 | 1;8;27 |
|     |     | 1000//1200 | 355M/L | E20012XP3YAX355MLF3W | \$110,130  | XD           | 4212                          | 1.00           | 368            | 95.7        | 61.358             | 380-415/660-690//440-460 | 1;8;27 |
| 340 | 250 | 3000//3600 | 355M/L | E25036XP3YAX355MLF3W | \$111,375  | XD           | 4348                          | 1.00           | 392            | 96.4        | 58.602             | 380-415/660-690//440-460 | 1;8;27 |
|     |     | 1500//1800 | 355M/L | E25018XP3YAX355MLF3W | \$94,903   | XD           | 4236                          | 1.00           | 432            | 95.8        | 61.358             | 380-415/660-690//440-460 | 1;8;27 |
|     |     | 1000//1200 | 355M/L | E25012XP3YAX355MLF3W | \$133,308  | XD           | 4818                          | 1.00           | 461            | 95.5        | 61.358             | 380-415/660-690//440-460 | 1;8;27 |
| 430 | 315 | 1500//1800 | 355M/L | E31518XP3YAX355MLF3W | \$108,540  | XD           | 4844                          | 1.00           | 538            | 95.8        | 61.358             | 380-415/660-690//440-460 | 1;8;27 |

Please refer to back cover for description of "NOTES"

For detailed specifications, data sheets, drawings and performance curves visit <http://www.weg.net>

Data subject to change without notice.

Can't find what you are looking for? Call 1-800-ASK-4WEG (275-4934)

# Farm Duty Motors

|   |       |
|---|-------|
| TEFC – Single-Phase – General Purpose – Foot Mount . . . . .          | A-252 |
| TEFC – Single-Phase – Auger Drive – Footless . . . . .                | A-253 |
| TEAO – Single-Phase – Poultry Fan – Foot Mount . . . . .              | A-253 |
| TEAO – Single-Phase – Poultry Fan – Resilient Base . . . . .          | A-253 |
| TEAO – Three-Phase – Grain Dryer/Vane Axial Fan . . . . .             | A-254 |
| TEAO – Single-Phase – Grain Dryer/Vane Axial Fan . . . . .            | A-254 |
| TEAO – Single-Phase – Aeration Fan . . . . .                          | A-254 |
| TEAO – Three-Phase – Aeration Fan . . . . .                           | A-254 |
| TEFC – Single-Phase – C-Face - Foot Mount - Irrigation Duty . . . . . | A-255 |
| TEFC – Three-Phase – C-Face - Foot Mount - Irrigation Duty . . . . .  | A-255 |
| Irrigation Drive Motors . . . . .                                     | A-256 |
| Jet End Booster Pump Motors . . . . .                                 | A-256 |



# Farm Duty Motors

WEG offers a complete line of TEFC Farm Duty motors providing high starting torque for the most demanding applications. Standard features such as v-rings provide versatility for indoor and outdoor applications. Overload protection available in all frames protects the motor from extreme overloads and offers maximum safety to operators.

## General Purpose - TEFC

- Double shielded ball bearings
- Insulation class F with class B temperature rise
- Start and run capacitor on 1.5 HP and up
- High starting Torque
- Manual Reset Thermal Overload Protector

## Auger Drive - TEFC

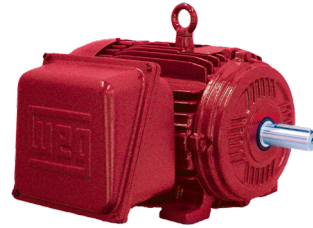
- Double shielded ball bearings
- Two bolts mounting NEMA 'N' flange
- Extended shaft (NDE) with wrench flat for manual jogging of auger
- Centrifugal start switch protected against auger drive overspeed
- Manual Reset Thermal Overload Protector

## Poultry Fan - TEAO

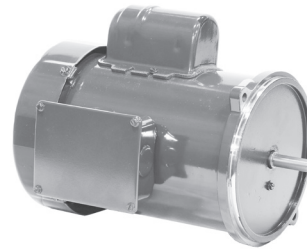
- Double shielded ball bearings
- Insulation class B
- Automatic Reset Thermal Overload Protector



Rolled Steel



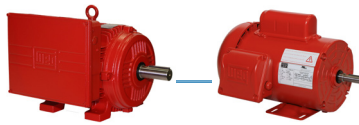
Cast Iron



Auger Drive



Poultry Fan



## TEFC – Single-Phase – General Purpose – Foot Mount

| HP   | kW   | RPM  | Frame   | Catalog Number      | List Price | Mult. Symbol | Approx. Shipping Weight (lbs) | Service Factor | FL Amps @ High | FL. Eff (%) | “C” Dimension (in) | oltage ()   | Notes |
|------|------|------|---------|---------------------|------------|--------------|-------------------------------|----------------|----------------|-------------|--------------------|-------------|-------|
| 0.33 | 0.25 | 1800 | W56     | .3318ES1RFDW56-S    | \$284      | R1           | 22                            | 1.15           | 3.00           | 61.0        | 11.500             | 115/230     | 4;9   |
| 0.5  | 0.37 | 1800 | W56     | .5018ES1RFDW56-S    | \$308      | R1           | 25                            | 1.15           | 4.00           | 64.0        | 11.894             | 115/230     | 4;9   |
| 0.75 | 0.55 | 1800 | 56      | .7518ES1RFD56-S     | \$357      | R1           | 34                            | 1.15           | 5.30           | 68.5        | 13.114             | 115/230     | 4;9   |
| 1    | 0.75 | 1800 | 56      | 00118ES1RFD56-S     | \$394      | R1           | 40                            | 1.15           | 6.80           | 71.0        | 13.902             | 115/230     | 4;9   |
|      |      | 1800 | 143/5T  | 00118ES1RFD143T-S   | \$400      | R1           | 40                            | 1.15           | 6.80           | 71.0        | 13.969             | 115/230     | 4;9   |
| 1.5  | 1.1  | 1800 | 56H     | 00158ES1RFD56H-S    | \$502      | R1           | 51                            | 1.15           | 7.48           | 77.0        | 15.083             | 115/230     | 4;9   |
|      |      | 1800 | 143/5T  | 00158ES1RFD145T-S   | \$504      | R1           | 50                            | 1.15           | 7.48           | 77.0        | 15.152             | 115/230     | 4;9   |
| 2    | 1.5  | 1800 | 56H     | 00218ES1RFD56H-S    | \$529      | R1           | 56                            | 1.15           | 10.0           | 78.5        | 15.870             | 115/230     | 4;9   |
|      |      | 1800 | 143/5T  | 00218ES1RFD145T-S   | \$578      | R1           | 57                            | 1.15           | 10.0           | 78.5        | 15.938             | 115/230     | 4;9   |
|      |      | 1800 | 182/4T  | 00218ES1RFD182T-W22 | \$790      | R1           | 85                            | 1.15           | 8.40           | 80.0        | 17.012             | 115/230     | 4;39  |
| 3    | 2.2  | 1800 | 182/4T  | 00318ES1DFD184T-W22 | \$915      | R1           | 104                           | 1.15           | 13.8           | 77.0        | 17.012             | 230         | 4;39  |
| 5    | 3.7  | 1800 | 182/4T  | 00518ES1DFD184T-W22 | \$1,074    | R1           | 117                           | 1.15           | 21.4           | 80.0        | 17.012             | 230         | 4;39  |
|      |      | 1800 | 213/5T  | 00518ES1DFD215T-W22 | \$1,205    | R1           | 146                           | 1.15           | 21.3           | 80.5        | 19.462             | 230         | 4;39  |
|      |      | 1800 | 213/5TZ | 00518ES1DFD215Z-W22 | \$1,205    | R1           | 146                           | 1.15           | 21.3           | 80.5        | 19.462             | 230         | 4;39  |
| 7.5  | 5.5  | 1800 | 213/5T  | 00718ES1DFD215T-W22 | \$1,463    | R1           | 176                           | 1.15           | 31.7           | 83.0        | 19.462             | 230         | 4;39  |
|      |      | 1800 | 213/5TZ | 00718ES1DFD215Z-W22 | \$1,463    | R1           | 176                           | 1.15           | 31.7           | 83.0        | 19.462             | 230         | 4;39  |
| 10   | 7.5  | 1800 | 213/5T  | 01018ES1DFD215T-W22 | \$1,692    | R1           | 194                           | 1.15           | 40.9           | 84.0        | 19.462             | 230         | 4;39  |
| 12.5 | 9.2  | 1800 | 213/5T  | 01218ES1DFD215T-W22 | \$1,889    | R1           | 205                           | 1.15           | 27.2           | 82.5        | 19.462             | 208-230/460 | 4;39  |



## TEFC – Single-Phase – Auger Drive – Footless

| HP   | kW   | RPM  | Frame | Catalog Number  | List Price | Mult. Symbol | Approx. Shipping Weight (lbs) | Service Factor | FL Amps @ High | FL Eff (%) | “C” Dimension (in) | Voltage (V) | Notes     |
|------|------|------|-------|-----------------|------------|--------------|-------------------------------|----------------|----------------|------------|--------------------|-------------|-----------|
| 0.33 | 0.25 | 1800 | 56NZ  | .3318ES1RAD56NZ | \$423      | A1           | 28                            | 1.00           | 3.0            | 60.0       | 10.200             | 115/230     | 4;9;20;40 |
| 0.50 | 0.37 | 1800 | 56NZ  | .5018ES1RAD56NZ | \$475      | A1           | 30                            | 1.00           | 3.6            | 70.0       | 11.200             | 115/230     | 4;9;20;40 |
| 0.75 | 0.55 | 1800 | 56NZ  | .7518ES1RAD56NZ | \$553      | A1           | 34                            | 1.00           | 4.6            | 74.0       | 11.700             | 115/230     | 4;9;20;40 |
| 1    | 0.75 | 1800 | 56N   | 00118ES1RAD56N  | \$683      | A1           | 35                            | 1.00           | 7.0            | 74.0       | 12.480             | 115/230     | 4;9;20;40 |
| 1.5  | 1.1  | 1800 | 56N   | 00158ES1RAD56N  | \$1,014    | A1           | 40                            | 1.00           | 7.7            | 80.0       | 12.870             | 115/230     | 4;9;20;40 |



## TEAO – Single-Phase – Poultry Fan – Foot Mount

| HP   | kW   | RPM  | Frame | Catalog Number | List Price | Mult. Symbol | Approx. Shipping Weight (lbs) | Service Factor | FL Amps @ High | FL Eff (%) | “C” Dimension (in) | Voltage (V) | Notes  |
|------|------|------|-------|----------------|------------|--------------|-------------------------------|----------------|----------------|------------|--------------------|-------------|--------|
| 0.33 | 0.25 | 1800 | 48    | .3318ES1BPFC48 | \$311      | G1           | 23                            | 1.25           | 3.00           | 64.0       | 10.748             | 115/208-230 | 3;9;16 |
| 0.5  | 0.37 | 1800 | C56   | .5018ES1BPFC56 | \$336      | G1           | 26                            | 1.25           | 4.20           | 65.0       | 11.102             | 115/208-230 | 3;9;16 |
| 0.75 | 0.55 | 1800 | B56   | .7518ES1BPFB56 | \$414      | G1           | 31                            | 1.25           | 5.60           | 70.0       | 11.102             | 115/208-230 | 3;9    |
| 1    | 0.75 | 1800 | D56   | 00118ES1BPDF56 | \$449      | G1           | 41                            | 1.15           | 7.00           | 72.0       | 12.283             | 115/208-230 | 3;9    |



## TEAO – Single-Phase – Poultry Fan – Resilient Base

| HP   | kW   | RPM  | Frame | Catalog Number   | List Price | Mult. Symbol | Approx. Shipping Weight (lbs) | Service Factor | FL Amps @ High | FL Eff (%) | “C” Dimension (in) | Voltage (V) | Notes     |
|------|------|------|-------|------------------|------------|--------------|-------------------------------|----------------|----------------|------------|--------------------|-------------|-----------|
| 0.33 | 0.25 | 1800 | 48    | .3318ES1BRBPFC48 | \$325      | G1           | 27                            | 1.25           | 3.00           | 64.0       | 11.339             | 115/208-230 | 3;9;13;16 |
| 0.5  | 0.37 | 1800 | C56   | .5018ES1BRBPFC56 | \$350      | G1           | 29                            | 1.25           | 4.20           | 65.0       | 11.732             | 115/208-230 | 3;9;13;16 |
| 0.75 | 0.55 | 1800 | B56   | .7518ES1BRBPFB56 | \$433      | G1           | 35                            | 1.25           | 5.60           | 70.0       | 11.811             | 115/208-230 | 3;9;13    |
| 1    | 0.75 | 1800 | D56   | 00118ES1BRBPDF56 | \$469      | G1           | 42                            | 1.15           | 7.00           | 72.0       | 12.992             | 115/208-230 | 3;9;13    |

Please refer to back cover for description of “NOTES”

For detailed specifications, data sheets, drawings and performance curves visit <http://www.weg.net>

Data subject to change without notice.

Can't find what you are looking for? Call 1-800-ASK-4WEG (275-4934)



## TEAO – Three-Phase – Grain Dryer/Vane Axial Fan

| HP     | kW      | RPM  | Frame   | Catalog Number     | List Price | Mult. Symbol | Approx. Shipping Weight (lbs) | Service Factor | FL Amps @ High | FL Eff (%) | “C” Dimension (in) | Voltage (V) | Notes  |
|--------|---------|------|---------|--------------------|------------|--------------|-------------------------------|----------------|----------------|------------|--------------------|-------------|--------|
| 1.5-3  | 1.1-2.2 | 3600 | 143/5TZ | 00336AP3EGD145TZ-S | \$750      | GD3          | 39                            | 1.00           | 2.41           | 79.7       | 12.795             | 230/460     | 1,9;38 |
| 3-4.5  | 2.2-3.4 | 3600 | 143/5TZ | 00456AP3EGD145TZ-S | \$795      | GD3          | 45                            | 1.00           | 4.01           | 83.8       | 13.582             | 230/460     | 1,9;38 |
|        |         | 3600 | 182/4Z  | 00456AP3EGD182Z-S  | \$827      | GD3          | 59                            | 1.00           | 4.27           | 86.2       | 14.601             | 230/460     | 1,9;38 |
| 5-7.5  | 3.7-5.5 | 3600 | 182/4TZ | 00736AP3EGD184TZ-S | \$933      | GD3          | 77                            | 1.00           | 6.45           | 87.8       | 16.338             | 230/460     | 1,9;38 |
| 7.5-10 | 5.5-7.5 | 3600 | 182/4TZ | 01036AP3EGD184TZ-S | \$1,123    | GD3          | 91                            | 1.00           | 9.04           | 89.8       | 17.913             | 230/460     | 1,9;38 |
| 10-15  | 7.5-11  | 3600 | 213/5TZ | 01536AP3EGD215TZ-S | \$1,408    | GD3          | 147                           | 1.00           | 12.20          | 92.5       | 17.912             | 230/460     | 1,9;38 |



## TEAO - Single-Phase - Grain Dryer

| HP     | RPM  | NEMA Frame | Catalog Number     | List Price | Mult. Symbol | FL Amps @ High | FL Eff. (%) | “C”Dim. (in) | Voltage (V) | Notes  |
|--------|------|------------|--------------------|------------|--------------|----------------|-------------|--------------|-------------|--------|
| 1.5-3  | 3600 | 145TZ      | 00336AP1DGD145TZ-S | \$910      | GD1          | 7.51           | 73.2        | 13.555       | 230         | 1,9;38 |
| 3-4.5  | 3600 | 145TZ      | 00456AP1DGD145TZ-S | \$1,025    | GD1          | 11.8           | 82.4        | 15.130       | 230         | 1,9;38 |
| 5-7.5  | 3600 | 182TZ      | 00736AP1DGD182TZ-S | \$1,296    | GD1          | 19.8           | 82.9        | 17.070       | 230         | 1,9;38 |
| 7.5-10 | 3600 | 182TZ      | 01036AP1DGD182TZ-S | \$1,338    | GD1          | 27.2           | 87.8        | 17.858       | 230         | 1,9;38 |
| 10-15  | 3600 | 215TZ      | 01536AP1DGD215TZ-S | \$2,024    | GD1          | 37.8           | 88.0        | 19.720       | 230         | 1,9;38 |



## TEAO – Single-Phase – Aeration Fan

| HP   | kW   | RPM  | Frame   | Catalog Number     | List Price | Mult. Symbol | Approx. Shipping Weight (lbs) | Service Factor | FL Amps @ High | FL Eff (%) | “C” Dimension (in) | Voltage (V) | Notes  |
|------|------|------|---------|--------------------|------------|--------------|-------------------------------|----------------|----------------|------------|--------------------|-------------|--------|
| 0.75 | 0.55 | 3600 | 56Z     | .7536AS1RAF56Z-S   | \$395      | R1           | 27                            | 1.15           | 4.00           | 66.0       | 11.201             | 115/230     | 3;9;38 |
| 1    | 0.75 | 3600 | 56Z     | 00136AS1RAF56Z-S   | \$459      | R1           | 31                            | 1.15           | 5.10           | 70.0       | 11.594             | 115/230     | 3;9;38 |
|      |      | 3600 | 56Z     | 00156AS1RAF56Z-S   | \$601      | R1           | 36                            | 1.15           | 6.60           | 75.0       | 12.382             | 115/230     | 3;9;38 |
| 1.5  | 1.1  | 3600 | 143/5TZ | 00156AS1RAF143TZ-S | \$643      | R1           | 41                            | 1.15           | 6.60           | 75.0       | 12.413             | 115/230     | 3;9;38 |
|      |      | 3600 | 143/5TZ | 00236AS1RAF143TZ-S | \$783      | R1           | 46                            | 1.15           | 8.70           | 77.0       | 12.807             | 115/230     | 3;9;38 |
| 3    | 2.2  | 3600 | 143/5TZ | 00336AS1RAF145TZ-S | \$818      | R1           | 53                            | 1.15           | 12.7           | 80.0       | 13.988             | 115/230     | 3;9;38 |



## TEAO – Three-Phase – Aeration Fan

| HP   | kW   | RPM  | Frame   | Catalog Number     | List Price | Mult. Symbol | Approx. Shipping Weight (lbs) | Service Factor | FL Amps @ High | FL Eff (%) | “C” Dimension (in) | Voltage (V) | Notes |
|------|------|------|---------|--------------------|------------|--------------|-------------------------------|----------------|----------------|------------|--------------------|-------------|-------|
| 0.75 | 0.55 | 3600 | 56Z     | .7536AS3EAF56Z-S   | \$402      | R1           | 23                            | 1.25           | 1.13           | 72.0       | 10.380             | 208-230/460 | 9;38  |
| 1    | 0.75 | 3600 | 56Z     | 00136AS3EAF56Z-S   | \$435      | R1           | 26                            | 1.25           | 1.51           | 74.0       | 10.380             | 208-230/460 | 9;38  |
| 1.5  | 1.1  | 3600 | 143/5TZ | 00156AP3EAF143TZ-S | \$498      | R1           | 33                            | 1.15           | 1.90           | 82.5       | 11.624             | 230/460     | 9;38  |
| 2    | 1.5  | 3600 | 143/5TZ | 00236AP3EAF143TZ-S | \$578      | R1           | 38                            | 1.15           | 2.55           | 82.5       | 12.018             | 230/460     | 9;38  |
| 3    | 2.2  | 3600 | 143/5TZ | 00336AP3EAF145TZ-S | \$659      | R1           | 45                            | 1.15           | 3.55           | 85.5       | 12.805             | 230/460     | 9;38  |



## IRRIGATION DUTY MOTORS

### TEFC

High Starting Torque makes these motors ideal for a wide range of applications.

#### Feature that makes a difference:

- Constructed with Metal Fan

#### Standard Features:

- Shielded Ball bearings
- Class F insulation (impregnation resin and magnet wire are class H)
- Gasketed Conduit Box



### TEFC – Single-Phase – C-Face – Foot Mount

| HP   | kW  | RPM  | Frame   | Catalog Number       | List Price | Mult. Symbol | Approx. Shipping Weight (lbs) | Service Factor | FL Amps @ High | FL. Eff (%) | “C” Dimension (in) | Voltage (V) | Notes |
|------|-----|------|---------|----------------------|------------|--------------|-------------------------------|----------------|----------------|-------------|--------------------|-------------|-------|
| 5    | 3.7 | 1800 | 182/4TC | 00518ES1EID184TC-W22 | \$1,153    | W1           | 121                           | 1.15           | 10.7           | 80.0        | 17.012             | 208-230/460 | 11    |
| 7.5  | 5.5 | 1800 | 213/5TC | 00718ES1EID215TC-W22 | \$1,471    | W1           | 179                           | 1.15           | 15.0           | 83.0        | 19.462             | 208-230/460 | 11    |
| 10   | 7.5 | 1800 | 213/5TC | 01018ES1EID215TC-W22 | \$1,694    | W1           | 196                           | 1.15           | 20.4           | 84.0        | 19.462             | 208-230/460 | 11    |
| 12.5 | 9.2 | 1800 | 213/5TC | 01218ES1EID215TC-W22 | \$1,888    | W1           | 209                           | 1.15           | 27.2           | 82.5        | 19.462             | 208-230/460 | 11    |

### W22 - Cast Iron

#### Standard Features:

- 50/60 Hz rated (380V on nameplate - 400/415V available)
- Rated 50Hz at same horsepower 1.0 Service Factor
- Class F insulation (impregnation resin and magnet wire are class H)
- F1 mount (field convertible to F2)
- Regreasable ball bearings (frames 254T and up)
- Gasketed conduit box

#### Feature that makes a difference:

- Constructed with Metal Fan

### TEFC – Three-Phase – C-Face – Foot Mount

| HP  | kW   | RPM  | Frame   | Catalog Number       | List Price | Mult. Symbol | Approx. Shipping Weight (lbs) | Service Factor | FL Amps @ High | FL. Eff (%) | “C” Dimension (in) | Voltage (V) | Notes |
|-----|------|------|---------|----------------------|------------|--------------|-------------------------------|----------------|----------------|-------------|--------------------|-------------|-------|
| 5   | 3.7  | 1800 | 182/4TC | 00518ET3EID184TC-W22 | \$860      | N1           | 110                           | 1.25           | 6.45           | 89.5        | 15.860             | 230/460     | 11    |
| 7.5 | 5.5  | 1800 | 213/5TC | 00718ET3EID213TC-W22 | \$1,202    | N1           | 180                           | 1.25           | 9.18           | 91.7        | 19.517             | 230/460     | 11    |
| 10  | 7.5  | 1800 | 213/5TC | 01018ET3EID215TC-W22 | \$1,386    | N1           | 194                           | 1.25           | 12.4           | 91.7        | 19.517             | 230/460     | 11    |
| 15  | 11   | 1800 | 254/6TC | 01518ET3EID254TC-W22 | \$1,996    | N1           | 353                           | 1.25           | 18.0           | 92.4        | 24.945             | 230/460     | 11    |
| 20  | 15   | 1800 | 254/6TC | 02018ET3EID256TC-W22 | \$2,349    | N1           | 403                           | 1.25           | 24.1           | 93.0        | 24.945             | 230/460     | 11    |
| 25  | 18.5 | 1800 | 284/6TC | 02518ET3EID284TC-W22 | \$2,947    | N1           | 451                           | 1.25           | 29.5           | 93.6        | 27.929             | 230/460     | 11    |

Please refer to back cover for description of “NOTES”

For detailed specifications, data sheets, drawings and performance curves visit <http://www.weg.net>

Data subject to change without notice.

Can't find what you are looking for? Call 1-800-ASK-4WEG (275-4934)

**A-255**

## IRRIGATION DUTY MOTORS

### Irrigation Drive Motors

These drive motors for center pivot and linear travel irrigation towers have been used on OEM equipment for decades. Its unique design offers a stainless steel rain shield for extra protection against water and other elements typically present in an agricultural environment. These motors are rated for 50°C ambient, making it the best for this application. Also featuring double sealed ball bearings, an automatic reset thermal overload protector, corrosion resistant phosphate shaft coating and a gasketed conduit box.



| HP  | kW  | RPM  | Frame | Catalog Number             | List Price   | Mult. Symbol | Approx. Shipping Weight (lbs) | Service Factor | FL Amps @ High | FL. Eff (%) | "C" Dimension (in) | Voltage (V) | Notes        |
|-----|-----|------|-------|----------------------------|--------------|--------------|-------------------------------|----------------|----------------|-------------|--------------------|-------------|--------------|
| 1   | .75 | 1800 | 56C   | <a href="#">1311731426</a> | <b>\$803</b> | A1           | 31                            | 1.00           | 1.40           | 85.5        | 14.580             | 460         | 3;9;15;42;45 |
| 1.5 | 1.1 | 1800 | 56C   | <a href="#">1312200400</a> | <b>\$879</b> | A1           | 38                            | 1.00           | 2.00           | 86.5        | 14.580             | 460         | 3;9;15;42;45 |

### Jet End Booster Pump Motor

The Jet End Booster Pump Motor is perfect for irrigation systems. The solution includes a stainless steel rain shield and canopy for vertical application, a fully gasketed conduit box, an automatic reset thermal overload protection, and stainless steel shaft end.



| HP | kW  | RPM  | Frame | Catalog Number             | List Price   | Mult. Symbol | Approx. Shipping Weight (lbs) | Service Factor | FL Amps @ High | FL. Eff (%) | "C" Dimension (in) | Voltage (V) | Notes     |
|----|-----|------|-------|----------------------------|--------------|--------------|-------------------------------|----------------|----------------|-------------|--------------------|-------------|-----------|
| 2  | 1.5 | 3600 | 56J   | <a href="#">1313171403</a> | <b>\$837</b> | A1           | 43                            | 1.50           | 2.80           | 85.5        | 14.220             | 460         | 3;9;15    |
|    |     | 3600 | 56CZ  | <a href="#">1313007404</a> | <b>\$851</b> | A1           | 43                            | 1.50           | 2.80           | 85.5        | 14.490             | 460         | 3;9;15;46 |

## VECTOR DUTY MOTORS

TENV – Three-Phase – Foot Mount – Double C-Face ..... A-258

## OIL WELL PUMPING – TEFC

TEFC – Three-Phase – NEMA Design ‘D’ ..... A-261

## COMPRESSOR DUTY MOTORS

ODP – Single-Phase – Foot Mount ..... A-263

ODP – Three-Phase – Foot Mount – NEMA Premium® ..... A-264

## HYDRAULIC PUMP MOTORS

TEFC – Three-Phase – SAE-A – High Efficiency ..... A-265

## BRAKE MOTORS

TEFC – Foot Mount - Cast Iron ..... A-267

TEFC – C-Face – Foot Mount - Cast Iron ..... A-268

TEFC – Foot Mount - Rolled Steel ..... A-269

TEFC – C-Face – Foot Mount - Rolled Steel ..... A-270

TEFC – C-Face – Footless - Rolled Steel ..... A-270

## SAW ARBOR MOTORS

TEFC – Three-Phase – Right-Hand Thread ..... A-271

TEFC – Three-Phase – Left-Hand Thread ..... A-271

## SOOT BLOWER MOTORS

TEFC – C-Face – Footless ..... A-272

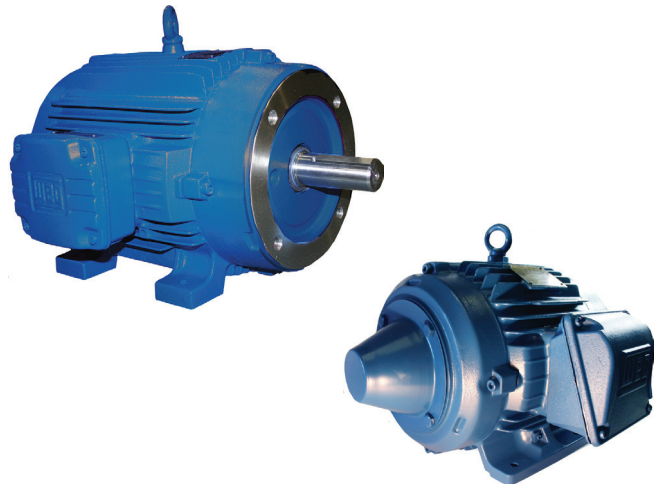
# Definite Purpose Motors

## VECTOR DUTY MOTORS

### TENV - Three-Phase - Foot Mount - Double C-Face

Designed specifically for inverter operation for applications requiring 1000:1 constant torque turndown ratio

- Class F insulation (Impregnation Resin and Magnet wire are class H)
- NEMA design B
- F1 Mounted (F2 convertible)
- Stainless Steel Nameplate - Laser etched with high contrast background
- Gasketed conduit box



#### Features that make a difference:

- Constant torque operation from 0 to base speed (1000:1) on PWM Vector Drive
- Constant Horsepower operation up to 150% base speed
- Ready for encoder mount
- With thermostats (1 per phase)
- Special nameplate data for easy drive set-up
- Ready for C-face brake, limited to 10 lb-ft braking torque

#### ADDITIONAL TECHNICAL DATA

CONTACT WEG OR VISIT [WWW.WEG.NET](http://WWW.WEG.NET)

**Inverter Rated:  
1000 : 1 for constant torque**

### TENV – Three-Phase – Foot Mount – Double C-Face

| HP  | kW   | RPM  | Frame   | Catalog Number                       | List Price | Mult. Symbol | Approx. Shipping Weight (lbs) | Service Factor | FL Amps @ High | FL. Eff (%) | "C" Dimension (in) | Voltage (V) | Notes    |
|-----|------|------|---------|--------------------------------------|------------|--------------|-------------------------------|----------------|----------------|-------------|--------------------|-------------|----------|
| 1   | 0.75 | 1800 | 143/5TC | <a href="#">00118NT3FVD143TC-W22</a> | \$697      | D1           | 51                            | 1.00           | 1.41           | 85.5        | 14.678             | 230/460     | 17;19    |
| 1.5 | 1.1  | 1800 | 143/5TC | <a href="#">00158NT3FVD145TC-W22</a> | \$705      | D1           | 60                            | 1.00           | 2.00           | 86.5        | 14.678             | 230/460     | 17;19    |
| 2   | 1.5  | 1800 | 143/5TC | <a href="#">00218NT3FVD145TC-W22</a> | \$928      | D1           | 62                            | 1.00           | 2.65           | 86.5        | 14.678             | 230/460     | 17;19    |
| 3   | 2.2  | 1800 | 182/4TC | <a href="#">00318NT3FVD182TC-W22</a> | \$1,150    | D1           | 107                           | 1.00           | 3.91           | 89.5        | 16.569             | 230/460     | 17;19    |
| 5   | 3.7  | 1800 | 182/4TC | <a href="#">00518NT3FVD184TC-W22</a> | \$1,373    | D1           | 116                           | 1.00           | 7.11           | 89.5        | 16.569             | 230/460     | 17;19;37 |
| 7.5 | 5.5  | 1800 | 213/5TC | <a href="#">00718NT3FVD213TC-W22</a> | \$1,803    | D1           | 173                           | 1.00           | 9.07           | 91.7        | 20.041             | 230/460     | 17;19    |
| 10  | 7.5  | 1800 | 213/5TC | <a href="#">01018NT3FVD215TC-W22</a> | \$2,157    | D1           | 207                           | 1.00           | 13.3           | 91.7        | 20.041             | 230/460     | 17;19;37 |
| 15  | 11   | 1800 | 254/6TC | <a href="#">01518NT3FVD254TC-W22</a> | \$2,567    | D1           | 365                           | 1.00           | 19.4           | 92.4        | 25.569             | 230/460     | 17;19    |
| 20  | 15   | 1800 | 254/6TC | <a href="#">02018NT3FVD256TC-W22</a> | \$3,747    | D1           | 398                           | 1.00           | 26.6           | 93.0        | 25.569             | 230/460     | 17;19;37 |



# System Drive VFD AC Motors

1HP – 1500HP TEFC

The WEG Systems Drive VFD AC motor raises the bar for customers who demand the best. Benefits such as very high overload and expanded speed range capabilities increase the value of the product for many variable speed applications.

The designs are based on the W22 and H-Line Severe Duty motor platforms for outstanding reliability.

## What makes this a Systems Drive Motor

- Constant torque capability to zero speed in standard NEMA frame size TEFC motor
- High torque designs for wide constant HP capability
- High short term overload capacities can exceed 200%
- 3 NC thermostats on winding
- Drive end shaft grounding available (standard 447T and larger )
- Insulated opposite drive end bearings available (standard 447T and larger)
- Very low noise
- Class I and Class II Division 2 up to 20:1CT to 449T frame (certification on larger ratings upon request)
- VFD rated insulation system exceeds requirements of NEMA MG1 Part 31 standard
- Custom designs for non-standard base speeds/frequencies (i.e. 600RPM base speed with 6-pole design) to replace many DC motor applications without gearing change



## What makes this a WEG Motor

- Rugged FC200 high strength cast iron construction
- Paint system exceeds 200 hour salt spray test per ASTM B117
- PPLS – Positive Pressure Lubrication System
- All Silicon C4 coated lamination steel for reliability and reparability\* – withstands burnout temperatures of 500C(935F) without loss of insulating properties. This allows the motor to be rewound back to the original efficiency
- Class F insulation system with mostly Class H components for long life
- Stainless steel nameplate

### Features:

- 1000:1 Constant Torque
- Powerful
- Reliable
- Flexible

Please contact your authorized WEG distributor or go to [www.weg.net](http://www.weg.net) for further information or additional specifications. **1-800-ASK-4WEG**

# Three-Phase General Purpose Motors

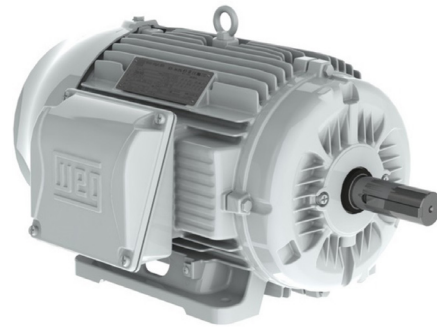
## OIL WELL PUMPING

### TEFC

These special motors have the high slip and high torque that oil well beam pumping units demand.

#### Standard Features:

- Regreasable Bearings (Frames 254T and up)
- NEMA design D (5-8% slip)
- Class F insulation (Impregnation Resin and magnet Wire are class H)
- F2 Mounted (Cast Iron frames are F1 convertible).
- Stainless Steel Nameplate - Laser etched with High contrast background (Cast Iron Frames only)
- Gasketed conduit box
- Class I, Div. 2, Groups A, B, C & D – T3, Class II, Div 2, Groups F & G – T3C



TEFC

#### Features that make a difference:

- High starting and breakdown torque (NEMA Design D)
- Roller bearings for frames 404T and up

ADDITIONAL TECHNICAL DATA

CONTACT WEG OR VISIT [WWW.WEG.NET](http://WWW.WEG.NET)







## TEFC – Three-Phase – NEMA Design ‘D’

| HP  | kW   | RPM  | Frame  | Catalog Number      | List Price | Mult. Symbol | Approx. Shipping Weight (lbs) | Service Factor | FL Amps @ High | FL. Eff (%) | “C” Dimension (in) | Voltage (V) | Notes |
|-----|------|------|--------|---------------------|------------|--------------|-------------------------------|----------------|----------------|-------------|--------------------|-------------|-------|
| 3   | 2.2  | 1200 | 213/5T | 00312ES3EOW215T-W22 | \$1,027    | P1E          | 147                           | 1.15           | 4.98           | 74.0        | 19.517             | 208-230/460 | 7     |
| 5   | 3.7  | 1200 | 213/5T | 00512ES3EOW215T-W22 | \$1,170    | P1E          | 185                           | 1.15           | 7.73           | 77.0        | 19.517             | 208-230/460 | 7     |
|     |      | 900  | 254/6T | 00509ES3EOW256T-W22 | \$2,242    | P1E          | 301                           | 1.15           | 7.27           | 77.0        | 24.945             | 208-230/460 | 7     |
| 7.5 | 5.5  | 1200 | 254/6T | 00712ES3EOW254T-W22 | \$1,688    | P1E          | 289                           | 1.15           | 9.40           | 82.5        | 24.945             | 208-230/460 | 7     |
| 10  | 7.5  | 1200 | 254/6T | 01012ES3EOW256T-W22 | \$2,070    | P1E          | 346                           | 1.15           | 12.7           | 82.5        | 24.945             | 208-230/460 | 7     |
|     |      | 900  | 284/6T | 01009ES3EOW286T-W22 | \$3,437    | P1E          | 400                           | 1.15           | 13.7           | 82.5        | 27.929             | 208-230/460 | 7     |
| 15  | 11   | 1200 | 284/6T | 01512ES3EOW284T-W22 | \$2,679    | P1E          | 447                           | 1.15           | 18.3           | 85.5        | 27.929             | 208-230/460 | 7     |
|     |      | 900  | 324/6T | 01509ES3EOW324T-W22 | \$4,293    | P1E          | 577                           | 1.15           | 21.8           | 85.5        | 31.116             | 208-230/460 | 7     |
| 20  | 15   | 1200 | 284/6T | 02012ES3EOW286T-W22 | \$3,162    | P1E          | 488                           | 1.15           | 24.2           | 86.5        | 27.929             | 208-230/460 | 7     |
|     |      | 900  | 324/6T | 02009ES3EOW326T-W22 | \$4,872    | P1E          | 629                           | 1.15           | 29.8           | 85.5        | 31.116             | 208-230/460 | 7     |
| 25  | 18.5 | 1200 | 324/6T | 02512ES3EOW324T-W22 | \$3,887    | P1E          | 598                           | 1.15           | 31.2           | 88.5        | 31.116             | 208-230/460 | 7     |
| 30  | 22   | 1200 | 324/6T | 03012ES3EOW326T-W22 | \$4,515    | P1E          | 632                           | 1.15           | 37.1           | 88.5        | 31.116             | 208-230/460 | 7     |
| 40  | 30   | 1200 | 364/5T | 04012ES3EOW365T-W22 | \$6,290    | P1E          | 1002                          | 1.15           | 48.9           | 87.5        | 34.251             | 208-230/460 | 7     |
| 50  | 37   | 1200 | 404/5T | 05012ES3EOW404T-W22 | \$8,172    | P1E          | 1299                          | 1.15           | 59.2           | 88.1        | 39.730             | 208-230/460 | 7;14  |
| 60  | 45   | 1200 | 404/5T | 06012ES3EOW405T-W22 | \$9,414    | P1E          | 1252                          | 1.15           | 71.3           | 89.0        | 39.730             | 208-230/460 | 7;14  |
| 75  | 55   | 1200 | 444/5T | 07512ES3EOW444T-W22 | \$14,976   | P1E          | 1856                          | 1.15           | 91.8           | 89.5        | 44.950             | 208-230/460 | 7;14  |
| 100 | 75   | 1200 | 444/5T | 10012ES3EOW445T-W22 | \$18,074   | P1E          | 2222                          | 1.15           | 121            | 90.2        | 44.950             | 208-230/460 | 7;14  |

Please refer to back cover for description of “NOTES”

For detailed specifications, data sheets, drawings and performance curves visit <http://www.weg.net>

Data subject to change without notice.

Can't find what you are looking for? Call 1-800-ASK-4WEG (275-4934)

**A-261**

# Definite Purpose Motors

## COMPRESSOR DUTY MOTORS

### ODP - Foot Mount

These high quality motors are designed to meet the high torque requirements of air compressor loads. Special electrical and mechanical design guarantees reliable service and longer motor life.

#### Single-Phase

- Class B insulation
- Start Capacitor
- Ball bearings
- Manual Reset Thermal Overload Protection
- High starting torque
- Rolled Steel frames have the base seam-welded to the frame for heavy duty use

#### Three-Phase

- Class F insulation (Impregnation Resin and Magnet wire are class H)
- Class B Rise at 1.15 Service Factor
- F1 Mounted (Cast Iron Frame motors are F2 convertible)
- Stainless Steel Nameplate - Laser etched with high contrast background (Cast Iron Frames only)
- Cast Iron Frames: Regreasable ball bearings
- Rolled Steel Frames: Permanently Lubricated ZZ ball bearings



Single Phase



Three Phase

#### ADDITIONAL TECHNICAL DATA

ELECTRICAL DATA: B-9; B-16

MECHANICAL DATA: B-77





# Definite Purpose Motors

## COMPRESSOR DUTY MOTORS

### ODP – Single-Phase – Foot Mount

| HP   | kW   | RPM  | Frame   | Catalog Number     | List Price | Mult. Symbol | Approx. Shipping Weight (lbs) | Service Factor | FL Amps @ High | FL. Eff (%) | “C” Dimension (in) | Voltage (V) | Notes     |
|------|------|------|---------|--------------------|------------|--------------|-------------------------------|----------------|----------------|-------------|--------------------|-------------|-----------|
| 0.5  | 0.37 | 3600 | W56     | .50360S1BCDW56-S   | \$224      | C1S          | 28                            | 1.00           | 3.10           | 63.0        | 9.866              | 115/208-230 | 1;4;6;9   |
| 0.75 | 0.55 | 3600 | W56     | .75360S1BCDW56-S   | \$237      | C1S          | 22                            | 1.00           | 4.30           | 68.5        | 10.260             | 115/208-230 | 1;4;6;9   |
| 1    | 0.75 | 3600 | 56      | 001360S1BCD56-S    | \$278      | C1S          | 36                            | 1.00           | 6.60           | 67.0        | 11.102             | 115/208-230 | 1;4;6;9   |
| 1.5  | 1.1  | 3600 | 56      | 001560S1BCD56-S    | \$311      | C1S          | 40                            | 1.00           | 8.70           | 68.0        | 11.496             | 115/208-230 | 1;4;6;9   |
| 2    | 1.5  | 3600 | 56H     | 002360S1BCD56-S    | \$372      | C1S          | 34                            | 1.00           | 8.90           | 70.0        | 11.890             | 115/208-230 | 1;4;6;9   |
| 3    | 2.2  | 3600 | 56H     | 003360S1CCD56-S    | \$432      | C1S          | 41                            | 1.00           | 12.7           | 80.0        | 12.677             | 208-230     | 1;4;6;9   |
|      |      | 1800 | 184T    | 003180S1CCDOL184T  | \$687      | C1           | 99                            | 1.15           | 17.5           | 75.0        | 14.875             | 208-230     | 4;6       |
| 5    | 3.7  | 3600 | 56H     | 005360S1DCD56H-S   | \$458      | C1S          | 53                            | 1.00           | 20.3           | 80.0        | 13.465             | 230         | 1;4;6;9   |
|      |      | 3600 | 56HZ    | 005360S1DCD56HZ-S  | \$481      | C1S          | 53                            | 1.00           | 20.3           | 80.0        | 13.533             | 230         | 1;4;5;6;9 |
|      |      | 3600 | W182/4Y | 005360S1CCDW184Y-S | \$526      | C1S          | 56                            | 1.00           | 20.7           | 80.0        | 15.152             | 208-230     | 1;4;5;6;9 |
|      |      | 1800 | 184T    | 005180S1CCDOL184T  | \$721      | C1           | 101                           | 1.15           | 21.5           | 82.5        | 14.875             | 208-230     | 4;6       |
|      |      | 1800 | 184T    | 005180S1CCD184T    | \$682      | C1           | 102                           | 1.25           | 21.5           | 82.5        | 14.875             | 208-230     | 6;10      |
| 7.5  | 5.5  | 1800 | 215T    | 007180S1CCD215T    | \$961      | C1           | 129                           | 1.15           | 31.3           | 84.5        | 19.660             | 208-230     | 5;6;9;28  |
| 10   | 7.5  | 1800 | 215T    | 010180S1CCD215T    | \$1,468    | C1           | 162                           | 1.15           | 43.0           | 85.0        | 21.235             | 208-230     | 5;6;9;28  |

Please refer to back cover for description of "NOTES"

For detailed specifications, data sheets, drawings and performance curves visit <http://www.weg.net>

Data subject to change without notice.

Can't find what you are looking for? Call 1-800-ASK-4WEG (275-4934)

**A-263**

# Definite Purpose Motors

## COMPRESSOR DUTY MOTORS



### ODP – Three-Phase – Foot Mount

| HP  | kW   | RPM  | Frame  | Catalog Number                    | List Price | Mult. Symbol | Approx. Shipping Weight (lbs) | Service Factor | FL Amps @ High | FL. Eff (%) | “C” Dimension (in) | Voltage (V) | Notes    |
|-----|------|------|--------|-----------------------------------|------------|--------------|-------------------------------|----------------|----------------|-------------|--------------------|-------------|----------|
| 1   | 0.75 | 1800 | 143/5T | <a href="#">001180T3E143T-S</a>   | \$390      | N1S          | 38                            | 1.15           | 1.50           | 85.5        | 11.181             | 230/460     | 9        |
|     |      | 1800 | 143/5T | <a href="#">001180T3P143T-S</a>   | \$390      | N1S          | 38                            | 1.15           | 3.50           | 85.5        | 11.181             | 200         | 9        |
|     |      | 1800 | 143/5T | <a href="#">001180T3ECD143T-S</a> | \$398      | N1S          | 38                            | 1.15           | 1.50           | 85.5        | 11.181             | 230/460     | 6;9      |
| 1.5 | 1.1  | 3600 | 143/5T | <a href="#">001560T3E143T-S</a>   | \$442      | N1S          | 33                            | 1.15           | 1.90           | 84.0        | 11.181             | 230/460     | 9        |
|     |      | 1800 | 143/5T | <a href="#">001580T3E145T-S</a>   | \$449      | N1S          | 45                            | 1.15           | 2.10           | 86.5        | 12.362             | 230/460     | 9        |
|     |      | 1800 | 143/5T | <a href="#">001580T3P145T-S</a>   | \$449      | N1S          | 45                            | 1.15           | 4.80           | 86.5        | 12.362             | 200         | 9        |
|     |      | 1800 | 143/5T | <a href="#">001580T3ECD145T-S</a> | \$458      | N1S          | 45                            | 1.15           | 2.10           | 86.5        | 12.362             | 230/460     | 6;9      |
| 2   | 1.5  | 3600 | 143/5T | <a href="#">002360T3E145T-S</a>   | \$487      | N1S          | 40                            | 1.15           | 2.40           | 85.5        | 11.969             | 230/460     | 9        |
|     |      | 1800 | 143/5T | <a href="#">002180T3E145T-S</a>   | \$492      | N1S          | 43                            | 1.15           | 2.70           | 86.5        | 12.362             | 230/460     | 9        |
|     |      | 1800 | 143/5T | <a href="#">002180T3P145T-S</a>   | \$492      | N1S          | 43                            | 1.15           | 6.20           | 86.5        | 12.362             | 200         | 9        |
|     |      | 1800 | 143/5T | <a href="#">002180T3ECD145T-S</a> | \$502      | N1S          | 43                            | 1.15           | 2.70           | 86.5        | 12.362             | 230/460     | 6;9      |
| 3   | 2.2  | 3600 | 143/5T | <a href="#">003360T3E145T-S</a>   | \$545      | N1S          | 43                            | 1.15           | 3.60           | 85.5        | 12.362             | 230/460     | 9        |
|     |      | 1800 | 182/4T | <a href="#">003180T3E182T-S</a>   | \$524      | N1S          | 73                            | 1.15           | 3.90           | 89.5        | 15.157             | 230/460     | 9        |
|     |      | 1800 | 182/4T | <a href="#">003180T3P182T-S</a>   | \$524      | N1S          | 73                            | 1.15           | 8.90           | 89.5        | 15.157             | 200         | 9        |
| 5   | 3.7  | 3600 | 56H    | <a href="#">005360S3ECD56-S</a>   | \$412      | C1S          | 41                            | 1.00           | 6.40           | 74.8        | 12.675             | 208-230/460 | 1;6;9;29 |
|     |      | 3600 | 182/4T | <a href="#">005360T3E182T-S</a>   | \$651      | N1S          | 61                            | 1.15           | 6.10           | 86.5        | 14.764             | 230/460     | 9        |
|     |      | 1800 | 182/4T | <a href="#">005180T3E184T-S</a>   | \$630      | N1S          | 88                            | 1.15           | 6.30           | 89.5        | 16.339             | 230/460     | 9        |
|     |      | 1800 | 182/4T | <a href="#">005180T3P184T-S</a>   | \$630      | N1S          | 88                            | 1.15           | 14.6           | 89.5        | 16.339             | 200         | 9        |
| 7.5 | 5.5  | 3600 | 182/4T | <a href="#">007360T3E184T-S</a>   | \$920      | N1S          | 76                            | 1.15           | 8.70           | 88.5        | 15.157             | 230/460     | 9        |
|     |      | 1800 | 213/5T | <a href="#">007180T3E213T-S</a>   | \$910      | N1S          | 125                           | 1.15           | 9.30           | 91.0        | 16.575             | 230/460     | 9        |
|     |      | 1800 | 213/5T | <a href="#">007180T3P213T-S</a>   | \$910      | N1S          | 125                           | 1.15           | 21.3           | 91.0        | 16.575             | 200         | 9        |
| 10  | 7.5  | 3600 | 213/5T | <a href="#">010360T3E213T-S</a>   | \$1,081    | N1S          | 126                           | 1.15           | 12.0           | 89.5        | 16.969             | 230/460     | 9        |
|     |      | 1800 | 213/5T | <a href="#">010180T3E215T-S</a>   | \$1,102    | N1S          | 130                           | 1.15           | 12.4           | 91.7        | 16.575             | 230/460     | 9        |
|     |      | 1800 | 213/5T | <a href="#">010180T3P215T-S</a>   | \$1,102    | N1S          | 130                           | 1.15           | 28.5           | 91.7        | 16.575             | 200         | 9        |
| 15  | 11   | 1800 | 254/6T | <a href="#">015180T3E254T-S</a>   | \$1,477    | N1S          | 211                           | 1.15           | 18.6           | 93.0        | 20.472             | 230/460     | 9        |
|     |      | 1800 | 254/6T | <a href="#">015180T3H254T-S</a>   | \$1,477    | N1S          | 211                           | 1.15           | 14.9           | 93.0        | 20.472             | 575         | 9        |
|     |      | 1800 | 254/6T | <a href="#">015180T3P254T-S</a>   | \$1,477    | N1S          | 211                           | 1.15           | 42.8           | 93.0        | 20.472             | 200         | 9        |
| 20  | 15   | 3600 | 254/6T | <a href="#">020360T3E254T-S</a>   | \$1,760    | N1S          | 187                           | 1.15           | 23.8           | 91.0        | 20.472             | 230/460     | 9        |
|     |      | 1800 | 254/6T | <a href="#">020180T3E256T-S</a>   | \$1,832    | N1S          | 235                           | 1.15           | 25.0           | 93.0        | 20.472             | 230/460     | 9        |
| 25  | 18.5 | 3600 | 254/6T | <a href="#">025360T3E256T-S</a>   | \$2,139    | N1S          | 202                           | 1.15           | 29.1           | 91.7        | 20.472             | 230/460     | 9        |

## HYDRAULIC PUMP MOTORS

### TEFC – Three-Phase – SAE-A – High Efficiency

Heavy duty cast iron enclosure designed for intermittent duty. Typical applications are hydraulic pumps for trash compactors, car lifts and others.

- Class F insulation (Impregnation Resin and magnet Wire are class H)
- F3 mount
- 8-hole SAE-A flange for different angle pump mounting
- Shaft with 3/4” bore (female shaft)



### Features that make a difference

- NPT Threaded terminal box
- Cast Iron frame
- Totally Enclosed IP55 rated

### TEFC – Three-Phase – SAE-A – High Efficiency

| HP  | kW  | RPM  | Frame  | Catalog Number       | List Price | Mult. Symbol | Approx. Shipping Weight (lbs) | Service Factor | FL Amps @ High | FL Eff (%) | “C” Dimension (in) | Voltage (V) | Notes   |
|-----|-----|------|--------|----------------------|------------|--------------|-------------------------------|----------------|----------------|------------|--------------------|-------------|---------|
| 5   | 3.7 | 1800 | 184TYZ | 00518EP3EHP184TYZ7F3 | \$819      | W1           | 99                            | 1.15           | 7.37           | 87.5       | 12.800             | 208-230/460 | 8;30;37 |
| 7.5 | 5.5 | 1800 | 213TYZ | 00718EP3EHP213TYZ7F3 | \$1,054    | W1           | 172                           | 1.15           | 10.9           | 89.5       | 14.816             | 208-230/460 | 8;30;37 |
| 10  | 7.5 | 1800 | 215TYZ | 01018EP3EHP215TYZ7F3 | \$1,244    | W1           | 189                           | 1.15           | 15.7           | 89.5       | 16.312             | 208-230/460 | 8;30;37 |

Please refer to back cover for description of “NOTES”

For detailed specifications, data sheets, drawings and performance curves visit <http://www.weg.net>

Data subject to change without notice.

## BRAKE MOTORS

### TEFC - Three-Phase - NEMA Premium®

WEG W22 brake motors consist of an induction motor coupled to a disc brake. Brake is of sturdy construction with few moving parts which guarantees long durability and minimum maintenance.



#### Standard Features:

- Class F insulation (Impregnation Resin and Magnet wire are class H)
- 230V Brake Rectifier
- F1 Mounted
- Stainless Steel Nameplate - Laser etched with high contrast background
- Regreasable ball bearings (Frames 254T and up)
- 60HZ - 50HZ available with custom build

Note: If separate power supply to the Brake is required, (Such as on Motors operating with Variable Frequency Drive), 230V to the Brake module is standard.

#### Optional Feature:

460V brake rectifier is available with motor modification

#### Features that make a difference:

- 1.25 Service Factor
- NPT Threaded terminal box
- Armature type brake
- Manual Release

#### Inverter Rated:

**1000:1 for variable torque**  
**20:1 for constant torque**

#### Brake Torques

| Frame  | N.m | lb.ft | Optional lb.ft |
|--------|-----|-------|----------------|
| 143/5T | 16  | 12    | 17             |
| 182/4T | 60  | 44    | N/A            |
| 213/5T | 125 | 59    | 92             |
| 254/6T | 235 | 111   | 173            |
| 284/6T | 400 | 192   | 254            |





# Definite Purpose Motors

## CAST IRON BRAKE MOTORS

### TEFC – Foot Mount

| HP  | kW   | RPM  | Frame  | Catalog Number                      | List Price | Mult. Symbol | Approx. Shipping Weight (lbs) | Service Factor | FL Amps @ High | FL. Eff (%) | "C" Dimension (in) | Voltage (V) | Notes |
|-----|------|------|--------|-------------------------------------|------------|--------------|-------------------------------|----------------|----------------|-------------|--------------------|-------------|-------|
| 1   | 0.75 | 1800 | 143/5T | <a href="#">00118ET3EBM143T-W22</a> | \$1,494    | B1           | 59                            | 1.25           | 1.47           | 85.5        | 16.231             | 230/460     | 25    |
|     |      | 1800 | 143/5T | <a href="#">00118ET3HBM143T-W22</a> | \$1,494    | B1           | 62                            | 1.25           | 1.18           | 85.5        | 16.231             | 575         | 25    |
|     |      | 1200 | 143/5T | <a href="#">00112ET3EBM145T-W22</a> | \$1,587    | B1           | 66                            | 1.25           | 1.73           | 82.5        | 16.231             | 230/460     | 25    |
|     |      | 900  | 182/4T | <a href="#">00109ET3EBM182T-W22</a> | \$2,594    | B1           | 126                           | 1.25           | 2.30           | 78.5        | 19.314             | 230/460     | 25    |
| 1.5 | 1.1  | 3600 | 143/5T | <a href="#">00156ET3EBM143T-W22</a> | \$1,501    | B1           | 73                            | 1.25           | 1.96           | 84.0        | 16.231             | 230/460     | 25    |
|     |      | 1800 | 143/5T | <a href="#">00158ET3EBM145T-W22</a> | \$1,569    | B1           | 65                            | 1.25           | 2.02           | 86.5        | 16.231             | 230/460     | 25    |
|     |      | 1200 | 182/4T | <a href="#">00152ET3EBM182T-W22</a> | \$2,264    | B1           | 117                           | 1.25           | 2.54           | 87.5        | 19.314             | 230/460     | 25    |
|     |      | 900  | 182/4T | <a href="#">00159ET3EBM184T-W22</a> | \$2,703    | B1           | 156                           | 1.25           | 2.70           | 82.5        | 19.314             | 230/460     | 25    |
| 2   | 1.5  | 3600 | 143/5T | <a href="#">00236ET3EBM145T-W22</a> | \$1,501    | B1           | 62                            | 1.25           | 2.56           | 85.5        | 16.231             | 230/460     | 25    |
|     |      | 1800 | 143/5T | <a href="#">00218ET3EBM145T-W22</a> | \$1,594    | B1           | 66                            | 1.25           | 2.76           | 86.5        | 16.231             | 230/460     | 25    |
|     |      | 1200 | 182/4T | <a href="#">00212ET3EBM184T-W22</a> | \$2,369    | B1           | 122                           | 1.25           | 3.23           | 88.5        | 19.314             | 230/460     | 25    |
|     |      | 900  | 213/5T | <a href="#">00209ET3EBM213T-W22</a> | \$3,345    | B1           | 217                           | 1.25           | 3.39           | 85.5        | 23.188             | 230/460     | 25    |
| 3   | 2.2  | 3600 | 182/4T | <a href="#">00336ET3EBM182T-W22</a> | \$2,290    | B1           | 140                           | 1.25           | 3.63           | 86.5        | 19.314             | 230/460     | 25    |
|     |      | 1800 | 182/4T | <a href="#">00318ET3EBM182T-W22</a> | \$2,052    | B1           | 115                           | 1.25           | 3.91           | 89.5        | 19.314             | 230/460     | 25    |
|     |      | 1200 | 213/5T | <a href="#">00312ET3EBM213T-W22</a> | \$3,220    | B1           | 196                           | 1.25           | 4.41           | 89.5        | 23.188             | 230/460     | 25    |
|     |      | 900  | 213/5T | <a href="#">00309ET3EBM215T-W22</a> | \$3,740    | B1           | 259                           | 1.25           | 4.55           | 85.5        | 23.188             | 230/460     | 25    |
| 5   | 3.7  | 3600 | 182/4T | <a href="#">00536ET3EBM184T-W22</a> | \$2,343    | B1           | 126                           | 1.25           | 5.90           | 88.5        | 19.314             | 230/460     | 25    |
|     |      | 1800 | 182/4T | <a href="#">00518ET3EBM184T-W22</a> | \$2,291    | B1           | 124                           | 1.25           | 6.45           | 89.5        | 19.314             | 230/460     | 25    |
|     |      | 1800 | 182/4T | <a href="#">00518ET3HBM184T-W22</a> | \$2,291    | B1           | 124                           | 1.25           | 5.16           | 89.5        | 19.314             | 575         | 25    |
|     |      | 1200 | 213/5T | <a href="#">00512ET3EBM215T-W22</a> | \$3,406    | B1           | 213                           | 1.25           | 6.83           | 89.5        | 23.188             | 230/460     | 25    |
|     |      | 900  | 254/6T | <a href="#">00509ET3EBM254T-W22</a> | \$5,641    | B1           | 358                           | 1.25           | 7.58           | 87.5        | 29.839             | 230/460     | 25    |
| 7.5 | 5.5  | 3600 | 213/5T | <a href="#">00736ET3EBM213T-W22</a> | \$3,002    | B1           | 200                           | 1.25           | 8.76           | 89.5        | 23.188             | 230/460     | 25    |
|     |      | 1800 | 213/5T | <a href="#">00718ET3EBM213T-W22</a> | \$2,903    | B1           | 215                           | 1.25           | 9.18           | 91.7        | 23.188             | 230/460     | 25    |
|     |      | 1200 | 254/6T | <a href="#">00712ET3EBM254T-W22</a> | \$5,172    | B1           | 377                           | 1.25           | 9.48           | 91.0        | 29.839             | 230/460     | 25    |
|     |      | 900  | 254/6T | <a href="#">00709ET3EBM256T-W22</a> | \$6,415    | B1           | 377                           | 1.25           | 11.1           | 87.5        | 29.839             | 230/460     | 25    |
| 10  | 7.5  | 3600 | 213/5T | <a href="#">01036ET3EBM215T-W22</a> | \$3,492    | B1           | 238                           | 1.25           | 11.6           | 90.2        | 23.188             | 230/460     | 25    |
|     |      | 1800 | 213/5T | <a href="#">01018ET3EBM215T-W22</a> | \$3,474    | B1           | 221                           | 1.25           | 12.4           | 91.7        | 23.188             | 230/460     | 25    |
|     |      | 1800 | 213/5T | <a href="#">01018ET3HBM215T-W22</a> | \$3,474    | B1           | 200                           | 1.25           | 9.92           | 91.7        | 23.188             | 575         | 25    |
|     |      | 1200 | 254/6T | <a href="#">01012ET3EBM256T-W22</a> | \$5,759    | B1           | 367                           | 1.25           | 12.9           | 91.0        | 29.839             | 230/460     | 25    |
| 15  | 11   | 3600 | 254/6T | <a href="#">01536ET3EBM254T-W22</a> | \$4,745    | B1           | 384                           | 1.25           | 17.2           | 91.0        | 29.839             | 230/460     | 25    |
|     |      | 1800 | 254/6T | <a href="#">01518ET3EBM254T-W22</a> | \$5,205    | B1           | 407                           | 1.25           | 18.0           | 92.4        | 29.839             | 230/460     | 25    |
|     |      | 1800 | 254/6T | <a href="#">01518ET3HBM254T-W22</a> | \$5,205    | B1           | 369                           | 1.25           | 14.4           | 92.4        | 29.839             | 575         | 25    |
| 20  | 15   | 3600 | 254/6T | <a href="#">02036ET3EBM256T-W22</a> | \$5,768    | B1           | 424                           | 1.25           | 23.2           | 91.0        | 29.839             | 230/460     | 25    |
|     |      | 1800 | 254/6T | <a href="#">02018ET3EBM256T-W22</a> | \$5,771    | B1           | 456                           | 1.25           | 24.1           | 93.0        | 29.839             | 230/460     | 25    |
| 25  | 18.5 | 1800 | 284/6T | <a href="#">02518ET3EBM284T-W22</a> | \$6,796    | B1           | 520                           | 1.25           | 29.5           | 93.6        | 32.976             | 230/460     | 25    |
| 30  | 22   | 1800 | 284/6T | <a href="#">03018ET3EBM286T-W22</a> | \$7,276    | B1           | 558                           | 1.25           | 35.1           | 93.6        | 32.976             | 230/460     | 25    |

Please refer to back cover for description of "NOTES"

For detailed specifications, data sheets, drawings and performance curves visit [http:// www.weg.net](http://www.weg.net)

Data subject to change without notice.

Can't find what you are looking for? Call 1-800-ASK-4WEG (275-4934)

A-267



### Spring-Set brake (Solenoid Actuated)

#### Standard Features:

- 1.15 Service Factor
- Manual Release Lever
- AC brake
- Inverter Rated
- IP55 Enclosure
- Dual Frequency (50/60 Hz)

#### Applications:

- Conveyors
- Door Operators
- Packaging Equipment
- Unit Handling





# Definite Purpose Motors

## ROLLED STEEL BRAKE MOTORS

### TEFC - Foot Mount

| HP   | kW   | RPM  | Frame | atalog Number                     | List Prie      | Mult Symbol | Approx. Shipping Weight (lbs) | Brake Torque (ft.lb) | FL. Amps @ High | FL. Eff (%) | "C" Dimension (in) | Volts       | Notes |
|------|------|------|-------|-----------------------------------|----------------|-------------|-------------------------------|----------------------|-----------------|-------------|--------------------|-------------|-------|
| 0.25 | 0.18 | 1800 | W56   | <a href="#">.2518ES3EBMW56-S</a>  | <b>\$928</b>   | RSB         | 24                            | 3                    | 0.50            | 66.0        | 14.610             | 208-230/460 | 9     |
| 0.33 | 0.25 | 1800 | W56   | <a href="#">.3318ES3EBMW56-S</a>  | <b>\$977</b>   | RSB         | 26                            | 3                    | 0.66            | 68.0        | 14.610             | 208-230/460 | 9     |
| 0.5  | 0.37 | 1800 | W56   | <a href="#">.5018ES3EBMW56-S</a>  | <b>\$1,105</b> | RSB         | 27                            | 3                    | 1.00            | 72.0        | 15.004             | 208-230/460 | 9     |
| 0.75 | 0.55 | 1800 | W56   | <a href="#">.7518ES3EBMW56-S</a>  | <b>\$1,301</b> | RSB         | 38                            | 6                    | 1.22            | 75.5        | 15.397             | 208-230/460 | 9     |
| 1    | 0.75 | 1800 | 56    | <a href="#">00118ET3EBM56-S</a>   | <b>\$1,504</b> | RSB         | 54                            | 6                    | 1.47            | 85.5        | 17.835             | 230/460     | 9     |
|      |      | 1800 | 143T  | <a href="#">00118ET3EBM143T-S</a> | <b>\$1,729</b> | RSB         | 55                            | 6                    | 1.47            | 85.5        | 17.914             | 230/460     | 9     |
| 1.5  | 1.1  | 1800 | 145T  | <a href="#">00158ET3EBM145T-S</a> | <b>\$1,866</b> | RSB         | 56                            | 10                   | 2.02            | 86.5        | 17.914             | 230/460     | 9     |
| 2    | 1.5  | 1800 | 145T  | <a href="#">00218ET3EBM145T-S</a> | <b>\$1,921</b> | RSB         | 60                            | 10                   | 2.72            | 86.5        | 18.307             | 230/460     | 9     |
| 3    | 2.2  | 1800 | 182T  | <a href="#">00318ET3EBM182T-S</a> | <b>\$2,117</b> | RSB         | 113                           | 15                   | 3.81            | 89.5        | 22.992             | 230/460     | 9     |
| 5    | 3.7  | 1800 | 184T  | <a href="#">00518ET3EBM184T-S</a> | <b>\$2,492</b> | RSB         | 91                            | 25                   | 6.49            | 89.5        | 22.992             | 230/460     | 9     |
| 7.5  | 5.5  | 1800 | 213T  | <a href="#">00718ET3EBM213T-S</a> | <b>\$4,563</b> | RSB         | 151                           | 35                   | 9.07            | 91.7        | 26.457             | 230/460     | 9     |
| 10   | 7.5  | 1800 | 215T  | <a href="#">01018ET3EBM215T-S</a> | <b>\$4,989</b> | RSB         | 165                           | 50                   | 12.2            | 91.7        | 26.850             | 230/460     | 9     |
| 15   | 11   | 1800 | 254T  | <a href="#">01518ET3EBM254T-S</a> | <b>\$6,985</b> | RSB         | 256                           | 75                   | 18.2            | 92.4        | 31.220             | 230/460     | 9     |
| 20   | 15   | 1800 | 256T  | <a href="#">02018ET3EBM256T-S</a> | <b>\$9,080</b> | RSB         | 291                           | 100                  | 24.7            | 93.0        | 32.007             | 230/460     | 9     |

Please refer to back cover for description of "NOTES"

For detailed specifications, data sheets, drawings and performance curves visit [http:// www.weg.net](http://www.weg.net)

Data subject to change without notice.

Can't find what you are looking for? Call **1-800-ASK-4WEG** (275-4934)

**A-269**

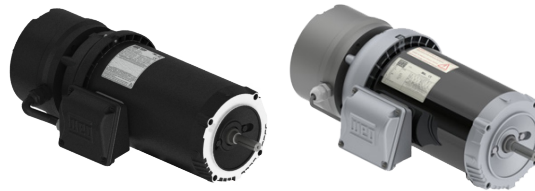
# Definite Purpose Motors

## CAST IRON BRAKE MOTORS



### TEFC - C-Face - Foot Mount

| HP  | kW   | RPM  | Frame | Catalog Number                     | List Price | Mult Symbol | Approx. Shipping Weight (lbs) | Brake Torque (ft.lb) | FL. Amps @ High | FL. Eff (%) | "C" Dimension (in) | Volts   | Notes |
|-----|------|------|-------|------------------------------------|------------|-------------|-------------------------------|----------------------|-----------------|-------------|--------------------|---------|-------|
| 1   | 0.75 | 1800 | 56C   | <a href="#">00118ET3EBM56C-S</a>   | \$1,542    | RSB         | 54                            | 6                    | 1.47            | 85.5        | 17.835             | 230/460 | 9     |
|     |      | 1800 | 143TC | <a href="#">00118ET3EBM143TC-S</a> | \$1,767    | RSB         | 55                            | 6                    | 1.47            | 85.5        | 17.914             | 230/460 | 9     |
| 1.5 | 1.1  | 1800 | 145TC | <a href="#">00158ET3EBM145TC-S</a> | \$1,904    | RSB         | 56                            | 10                   | 2.02            | 86.5        | 17.914             | 230/460 | 9     |
| 2   | 1.5  | 1800 | 145TC | <a href="#">00218ET3EBM145TC-S</a> | \$1,959    | RSB         | 60                            | 10                   | 2.72            | 86.5        | 18.307             | 230/460 | 9     |
| 3   | 2.2  | 1800 | 182TC | <a href="#">00318ET3EBM182TC-S</a> | \$2,189    | RSB         | 113                           | 15                   | 3.81            | 89.5        | 22.992             | 230/460 | 9     |
| 5   | 3.7  | 1800 | 184TC | <a href="#">00518ET3EBM184TC-S</a> | \$2,564    | RSB         | 91                            | 25                   | 6.49            | 89.5        | 22.992             | 230/460 | 9     |
| 7.5 | 5.5  | 1800 | 213TC | <a href="#">00718ET3EBM213TC-S</a> | \$4,702    | RSB         | 151                           | 35                   | 9.07            | 91.7        | 26.457             | 230/460 | 9     |
| 10  | 7.5  | 1800 | 215TC | <a href="#">01018ET3EBM215TC-S</a> | \$5,128    | RSB         | 165                           | 50                   | 12.2            | 91.7        | 26.850             | 230/460 | 9     |



### TEFC - C-Face - Footless

| HP   | kW   | RPM  | Frame | Catalog Number                      | List Price | Mult Symbol | Approx. Shipping Weight (lbs) | Brake Torque (ft.lb) | FL. Amps @ High | FL. Eff (%) | "C" Dimension (in) | Volts       | Notes |
|------|------|------|-------|-------------------------------------|------------|-------------|-------------------------------|----------------------|-----------------|-------------|--------------------|-------------|-------|
| 0.25 | 0.18 | 1800 | W56C  | <a href="#">.2518ES3EBMW56CFL-S</a> | \$966      | RSB         | 24                            | 3                    | 0.50            | 66.0        | 14.610             | 208-230/460 | 9     |
| 0.33 | 0.25 | 1800 | W56C  | <a href="#">.3318ES3EBMW56CFL-S</a> | \$1,015    | RSB         | 26                            | 3                    | 0.66            | 68.0        | 14.610             | 208-230/460 | 9     |
| 0.5  | 0.37 | 1800 | W56C  | <a href="#">.5018ES3EBMW56CFL-S</a> | \$1,143    | RSB         | 27                            | 3                    | 1.00            | 72.0        | 15.004             | 208-230/460 | 9     |
| 0.75 | 0.55 | 1800 | W56C  | <a href="#">.7518ES3EBMW56CFL-S</a> | \$1,339    | RSB         | 38                            | 6                    | 1.22            | 75.5        | 15.397             | 208-230/460 | 9     |
| 1    | 0.75 | 1800 | 56C   | <a href="#">00118ET3EBM56CFL-S</a>  | \$1,542    | RSB         | 54                            | 6                    | 1.47            | 85.5        | 17.835             | 230/460     | 9     |
|      |      | 1800 | 143TC | <a href="#">00118ET3EBMR143TC-S</a> | \$1,767    | RSB         | 55                            | 6                    | 1.47            | 85.5        | 17.914             | 230/460     | 9     |
| 1.5  | 1.1  | 1800 | 145TC | <a href="#">00158ET3EBMR145TC-S</a> | \$1,904    | RSB         | 56                            | 10                   | 2.02            | 86.5        | 17.914             | 230/460     | 9     |
| 2    | 1.5  | 1800 | 145TC | <a href="#">00218ET3EBMR145TC-S</a> | \$1,959    | RSB         | 60                            | 10                   | 2.72            | 86.5        | 18.307             | 230/460     | 9     |
| 3    | 2.2  | 1800 | 182TC | <a href="#">00318ET3EBMR182TC-S</a> | \$2,189    | RSB         | 113                           | 15                   | 3.81            | 89.5        | 22.992             | 230/460     | 9     |
| 5    | 3.7  | 1800 | 184TC | <a href="#">00518ET3EBMR184TC-S</a> | \$2,564    | RSB         | 91                            | 25                   | 6.49            | 89.5        | 22.992             | 230/460     | 9     |
| 7.5  | 5.5  | 1800 | 213TC | <a href="#">00718ET3EBMR213TC-S</a> | \$4,702    | RSB         | 151                           | 35                   | 9.07            | 91.7        | 26.457             | 230/460     | 9     |
| 10   | 7.5  | 1800 | 215TC | <a href="#">01018ET3EBMR215TC-S</a> | \$5,128    | RSB         | 165                           | 50                   | 12.2            | 91.7        | 26.850             | 230/460     | 9     |

### Motor Options upon Inquiry:

- Single-Phase Motor
- ODP or TENV Enclosure
- AEGIS® Inside

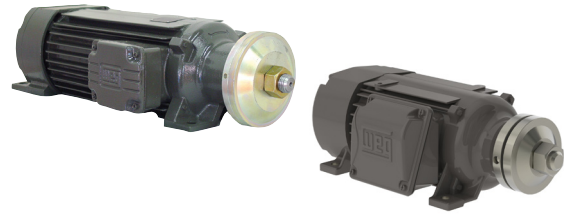
Please refer to back cover for description of "NOTES"

For detailed specifications, data sheets, drawings and performance curves visit <http://www.weg.net>

## SAW ARBOR MOTORS

### TEFC

Single and double shaft end available. These intermittent duty motors are suitable for a wide range of applications such as circular saws, pendulum saws, polishing machines, among others.



### Standard Features:

- Class F insulation (Impregnation Resin and magnet Wire are class H)
- Ball bearings
- PG threaded terminal boxes

### Features that make a difference:

- Reinforced cast iron frame
- Low profile

### TEFC – Three-Phase – Right-Hand Thread

| HP  | kW  | RPM  | Frame | Catalog Number  | List Price | Mult. Symbol | Approx. Shipping Weight (lbs) | Service Factor | FL Amps @ High | FL. Eff (%) | “C” Dimension (in) | Voltage (V) | Notes |
|-----|-----|------|-------|-----------------|------------|--------------|-------------------------------|----------------|----------------|-------------|--------------------|-------------|-------|
| 3   | 2.2 | 3600 | 80S   | 00336ES3ESA80SR | \$969      | 01           | 93                            | 1.00           | 4.29           | 80.5        | 18.543             | 208-230/460 | 39    |
|     |     | 3600 | 80M   | 00536ES3ESA80MR | \$1,160    | 01           | 109                           | 1.00           | 6.65           | 85.0        | 20.512             | 208-230/460 | 39    |
| 5   | 3.7 | 1800 | 90L   | 00518ES3ESA90LR | \$1,701    | 01           | 163                           | 1.00           | 7.03           | 84.5        | 26.476             | 208-230/460 | 39    |
|     |     | 3600 | 80L   | 00736ES3ESA80LR | \$1,642    | 01           | 132                           | 1.00           | 9.76           | 87.4        | 22.480             | 208-230/460 | 39    |
| 7.5 | 5.5 | 3600 | 80L   | 00736ES3HSA80LR | \$1,642    | 01           | 133                           | 1.00           | 7.81           | 87.4        | 22.480             | 575         | 39    |
|     |     | 1800 | 90L   | 00718ES3ESA90LR | \$1,855    | 01           | 179                           | 1.00           | 10.1           | 85.3        | 26.476             | 208-230/460 | 39    |
|     |     | 3600 | 90L   | 01036ES3ESA90LR | \$1,953    | 01           | 178                           | 1.00           | 12.3           | 85.0        | 26.476             | 208-230/460 | 39    |
| 10  | 7.5 | 3600 | 90L   | 01036ES3HSA90LR | \$1,953    | 01           | 179                           | 1.00           | 9.84           | 85.0        | 26.476             | 575         | 39    |
|     |     | 1800 | 90L   | 01018ES3ESA90LR | \$2,176    | 01           | 192                           | 1.00           | 14.7           | 85.5        | 26.476             | 208-230/460 | 39    |

### TEFC – Three-Phase – Left-Hand Thread

| HP  | kW  | RPM  | Frame | Catalog Number  | List Price | Mult. Symbol | Approx. Shipping Weight (lbs) | Service Factor | FL Amps @ High | FL. Eff (%) | “C” Dimension (in) | Voltage (V) | Notes |
|-----|-----|------|-------|-----------------|------------|--------------|-------------------------------|----------------|----------------|-------------|--------------------|-------------|-------|
| 3   | 2.2 | 3600 | 80S   | 00336ES3ESA80SL | \$969      | 01           | 93                            | 1.00           | 4.29           | 80.5        | 18.543             | 208-230/460 | 39    |
|     |     | 3600 | 80M   | 00536ES3ESA80ML | \$1,160    | 01           | 109                           | 1.00           | 6.65           | 85.0        | 20.512             | 208-230/460 | 39    |
| 5   | 3.7 | 1800 | 90L   | 00518ES3ESA90LL | \$1,701    | 01           | 163                           | 1.00           | 7.03           | 84.5        | 26.476             | 208-230/460 | 39    |
|     |     | 3600 | 80L   | 00736ES3ESA80LL | \$1,642    | 01           | 132                           | 1.00           | 9.76           | 87.4        | 22.480             | 208-230/460 | 39    |
| 7.5 | 5.5 | 3600 | 80L   | 00736ES3HSA80LL | \$1,642    | 01           | 134                           | 1.00           | 7.81           | 87.4        | 22.480             | 575         | 39    |
|     |     | 1800 | 90L   | 00718ES3ESA90LL | \$1,855    | 01           | 177                           | 1.00           | 10.1           | 85.3        | 26.476             | 208-230/460 | 39    |
|     |     | 3600 | 90L   | 01036ES3ESA90LL | \$1,953    | 01           | 178                           | 1.00           | 12.3           | 85.0        | 26.476             | 208-230/460 | 39    |
| 10  | 7.5 | 3600 | 90L   | 01036ES3HSA90LL | \$1,953    | 01           | 180                           | 1.00           | 9.84           | 85.0        | 26.476             | 575         | 39    |
|     |     | 1800 | 90L   | 01018ES3ESA90LL | \$2,176    | 01           | 192                           | 1.00           | 14.7           | 85.5        | 26.476             | 208-230/460 | 39    |

Please refer to back cover for description of “NOTES”

For detailed specifications, data sheets, drawings and performance curves visit <http://www.weg.net>

Data subject to change without notice.

Can't find what you are looking for? Call 1-800-ASK-4WEG (275-4934)

A-271

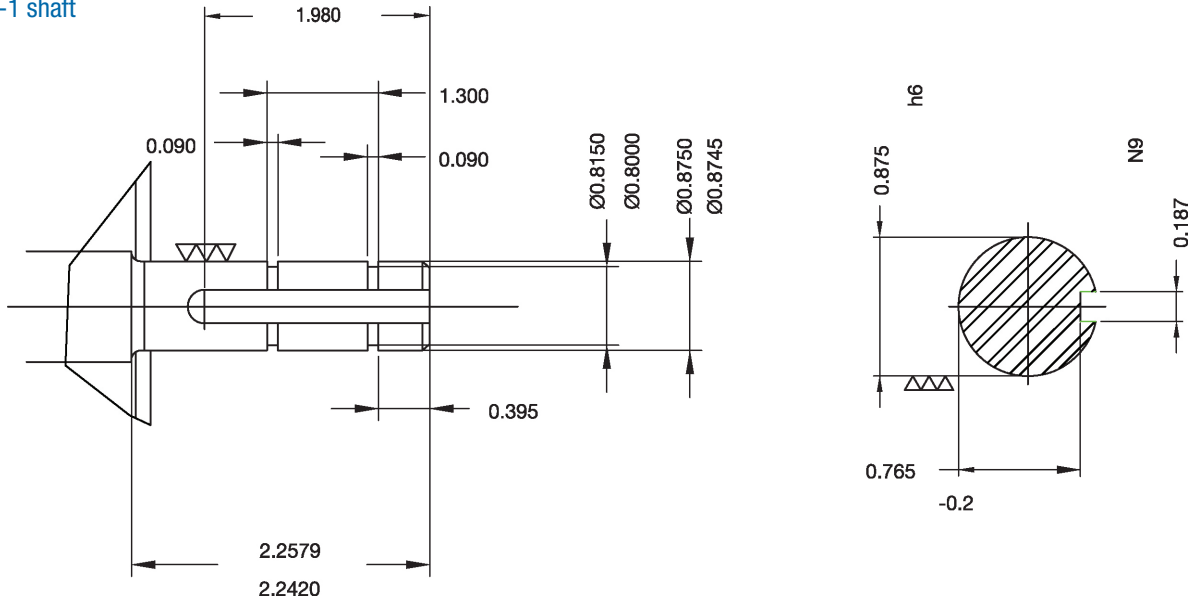


## SOOT BLOWER MOTORS

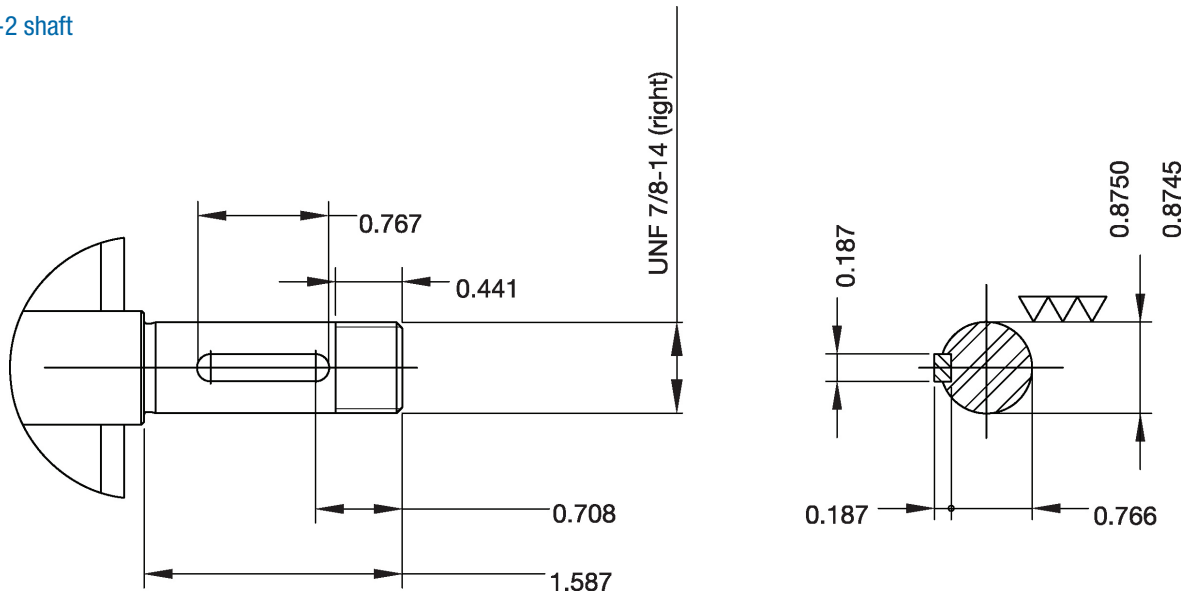
### TEFC – C-Face – Footless

| HP  | kW  | RPM  | Frame    | Catalog Number       | List Price | Mult. Symbol | Approx. Shipping Weight (lbs) | Service Factor | FL Amps @ High | FL. Eff (%) | "C" Dimension (in) | Voltage (V) | Notes |
|-----|-----|------|----------|----------------------|------------|--------------|-------------------------------|----------------|----------------|-------------|--------------------|-------------|-------|
| 1.5 | 1.1 | 1800 | 143/5TCZ | 00158ET3ESB145TCZ1-S | \$1,489    | RSP          | 43                            | 1.15           | 2.20           | 86.5        | 13.583             | 230/460     | 9;20  |
| 2   | 1.5 | 1800 | 143/5TCZ | 00218ET3ESB145TCZ1-S | \$1,612    | RSP          | 47                            | 1.15           | 2.70           | 86.5        | 13.976             | 230/460     | 9;20  |
|     |     | 1800 | 143/5TCZ | 00218ET3ESB145TCZ2-S | \$1,612    | RSP          | 47                            | 1.15           | 2.70           | 86.5        | 14.049             | 230/460     | 9;20  |

Type -1 shaft



Type -2 shaft



- Models in blue text are NEMA Premium Efficiency

- Models in green text are NEMA Super Premium Efficiency

## Catalog Notes

|    |  |    |  |
|----|--|----|--|
| 1  | 1.0 Service Factor   | 31 | Rating is suitable for 1.0SF @ 50Hz. Also suitable for next lower HP @ 1.15SF 50Hz |
| 2  | Aluminum Frame with Removable Feet   | 32 | Suitable for 1.15SF @ 50°C ambient   |
| 3  | Automatic Reset Thermal Overload Protector   | 33 | Suitable for 380V 60Hz when wired as YY (double WYE)                               |
| 4  | Manual Reset Thermal Overload Protector  | 34 | AEGIS® Inside  |
| 5  | CCW Rotation Viewed from Shaft End - Non Reversible  | 35 | AEGIS® ring installation reduces the available "N-W" length                        |
| 6  | Compressor Duty  | 36 | Super Premium  |
| 7  | F2 Mount   | 37 | Design A   |
| 8  | F3 Mount   | 38 | TEAO - Totally Enclosed Air Over   |
| 9  | Rolled Steel Frame - Cannot be modified with T Box on opposite side                              | 39 | Cannot be modified with T Box on opposite side                                     |
| 10 | Not Thermally Protected  | 40 | NDE shaft with 3/8" drive socket   |
| 11 | Metal fan - Not suitable for division 2  | 41 | Also rated 230/460V 50Hz 1.0 SF  |
| 12 | Reduced Frame  | 42 | Rated 50°C ambient   |
| 13 | Resilient Base   | 43 | With insulated non drive end housing   |
| 14 | Roller Bearing   | 44 | With air deflector. Flange MOD not available                                       |
| 15 | Round Body - Drip Cover Included   | 45 | Also rated 380V 50Hz   |
| 16 | Split-Phase Motor  | 46 | 56J shaft end with dual opposed threads (7/16-20 UNF-2A R.H and 3/8-16 UNF-2A L.H) |
| 17 | TENV - Totally Enclosed Non Ventilated   | 47 | Motor designed with copper bar rotor   |
| 18 | Z-Frame; Bigger Shaft Diameter and Bearings  | 48 | Motor suitable for safe area only  |
| 19 | 105K Tempature Rise; VFD service requires HP derate  |    |  |
| 20 | Round Body - Drip Cover NOT Included   |    |  |
| 21 | Stainless Steel Body   |    |  |
| 22 | Two Speed - Double Windings  |    |  |
| 23 | Two Speed - Single Winding   |    |  |
| 24 | Modified item. Usually ships in two weeks  |    |  |
| 25 | Brake rectifier suitable for 230VAC  |    |  |
| 26 | Brake rectifier suitable for 460VAC  |    |  |
| 27 | For Export Only (not to be used in the USA) due to Certification and/or Efficiency requirements. |    |  |
| 28 | ODP Fan Cooled   |    |  |
| 29 | Standard Efficiency  |    |  |
| 30 | High Efficiency (EPACT)  |    |  |